



BULGARIAN  
NATIONAL BANK

## **GROSS EXTERNAL DEBT OF BULGARIA**

**June 2011**

23 August 2011



## TABLE OF CONTENTS

|  |    |
|--|----|
| I. External Debt of Bulgaria (June 2011) .....   | 3  |
| Dynamics of the Newly Declared Loans, January – June 2011 .....                                    | 6  |
| Tables .....   | 9  |
| Gross External Debt Stock by Sectors (comparative table) .....                                     | 10 |
| Gross External Debt Stock by Sectors (monthly data) .....  | 12 |
| Maturity Structure of the Gross External Debt (monthly data) .....                                 | 13 |
| Gross External Debt Stock by Instruments (monthly data) .....                                      | 14 |
| Structure of the Short- and Long-Term External Debt by Instruments .....                           | 15 |
| Government Debt Securities, Issued on the Local Market, Owned by Non-Residents .....               | 16 |
| Government Bonds, Issued on the International Markets and Owned by Residents .....                 | 16 |
| Gross External Debt Stock by Creditors (comparative table) .....                                   | 17 |
| Currency Structure of the Gross External Debt .....  | 18 |
| Net Flows .....  | 19 |
| Gross External Debt Disbursements by Sectors (comparative table) .....                             | 20 |
| Gross External Debt Disbursements by Instruments (comparative table) .....                         | 21 |
| Gross External Debt Service by Sectors (comparative table) .....                                   | 22 |
| Gross External Debt Service by Instruments (comparative table) .....                               | 23 |
| Net External Debt .....  | 24 |
| Geographical Structure of the External Debt of Other Sectors .....                                 | 25 |
| Branch Structure of the External Debt of Other Sectors .....                                       | 26 |
| Interest Rate Structure of Other Sectors' External Financial Debt .....                            | 27 |
| External Sector Indicators (table and graphs) .....  | 28 |
| Methodological Notes on the Compilation of the Gross External Debt of Bulgaria .....               | 35 |
| <br>   |    |
| II. International Investment Position of Bulgaria (March 2011) .....                               | 41 |
| Methodological Notes on the Compilation of the International Investment Position of Bulgaria ..... | 45 |
| <br>   |    |
| External Sector Data, Published on the Internet Site of the BNB .....                              | 49 |



# GROSS EXTERNAL DEBT OF BULGARIA<sup>1</sup>

JUNE 2011

## Gross External Debt

As of end-June 2011, **Gross External Debt** amounted to EUR 36,207.2 million, decreasing by EUR 472.2 million compared to the end of 2010 (EUR 36,679.5 million). As a percent of GDP<sup>2</sup> the gross external debt was 93.1%, decreasing by 8.7 p.p. compared to end-2010 (101.8% of GDP). Banks' liabilities decrease by EUR 342.7 million, 5%. Compared to end-June 2010 (EUR 37,305.4 million) the gross external debt decreased by EUR 1,098.2 million (2.9% of GDP).

**Excluding valuation changes**, gross external debt as of end-June 2011 compared to end-2010 decreased by 0.7% (EUR 273.1 million) against a reported nominal decrease of 1.3% (EUR 472.2 million).

**Long-term liabilities** were EUR 25,349.1 million (70% of total external debt), increasing by EUR 174.6 million compared to end-2010 (EUR 25,174.5 million, 68.6% of total external debt). Compared to end-June 2010 (EUR 25,581.2 million, 68.6% of total external debt) they decreased by EUR 232 million (0.9%).

**Short-term liabilities** amounted to EUR 10,858.1 million (27.9% of GDP), decreasing by EUR 646.9 million compared to end-2010 (EUR 11,505 million, 31.9% of GDP). Short-term debt of *Banks'* decreased by EUR 514.3 million (of which EUR 483.4 million *deposits of non-residents*), and the short-term liabilities of *Other Sectors* decreased by EUR 132.6 million. Compared to end-June 2010 (EUR 11,724.2 million) short-term debt decreased by EUR 866.1 million (7.4%).

**General Government debt** amounted to EUR 2,742.3 million (7.1% of GDP), decreasing by EUR 130.7 million compared to end-2010 (EUR 2,873 million, 8% of GDP)<sup>3</sup>. Compared to end-June 2010 (EUR 2,873.2 million) the sector's debt decreased by EUR 130.9 million (4.6%).

**Banks' debt** amounted to EUR 6,519.3 million (16.8% of GDP), decreasing by EUR 342.7 million (5%) compared to end-2010 (EUR 6,862.1 million, 19% of GDP). Compared to end-June 2010 (EUR 7,272.5 million) the sector's debt decreased by EUR 753.1 million (10.4%).

As of end-June 2011 **deposits of non-residents** in local banks amounted to EUR 4,279.1 million, and the decrease against end-2010 amounted to EUR 483.4 million (10.2%).

**Other Sectors' debt**<sup>4</sup> was EUR 12,454.7 million (32% of GDP), increasing by EUR 258.4 million compared to end-2010 (EUR 12,196.4 million, 33.8% of GDP). Compared to end-June 2010 (EUR 12,195 million) it increased by EUR 259.7 million (2.1%).

---

<sup>1</sup> The analysis is based on the table *Gross External Debt by Sectors*. Preliminary data for 2010 and 2011. The data for May 2011 are revised. In accordance with the methodological notes with the July 2011 report the data for January 2008 – June 2011 are to be revised.

<sup>2</sup> GDP for 2011 - EUR 38,892 million (BNB estimate) and GDP for 2010 – EUR 36,032.9 million (NSI data as of 11.03.2011).

<sup>3</sup> Following the resident concept.

<sup>4</sup> Due to quarterly reporting of firms April -- June 2011 trade credits data are subject to revisions.

As of end June 2011, 70.2% (EUR 7,677.7 million) of the financial loans of *Other Sectors* were liabilities of enterprises with foreign direct investment, against 66.5% (EUR 7,078.8 million) at the end of 2010. The financial loans of enterprises with foreign direct investment increased by EUR 598.9 million, and those of enterprises without foreign direct investment decreased by EUR 302.1 million. As a result, the total increase of *Other Sectors*' financial loans amounted to EUR 296.8 million.

**Intercompany Lending**<sup>4</sup> decreased by EUR 257.2 million (1.7%) and amounted to EUR 14,490.9 million (37.3% of GDP) as of end-June 2011 against EUR 14,748 million (40.9% of GDP) at the end of 2010. Compared to end-June 2010 (EUR 14,964.7 million) it decreased by EUR 473.9 million (3.2%).

### **Gross External Debt Currency Structure**

As of end-June 2011, 87.7% of the gross external debt was denominated in EUR and 6.2% in USD. Compared to December 2010 the share of the EUR denominated debt increased by 0.1 p.p. and that of the USD denominated debt decreased by 0.3 p.p. At end-June 2011 yoy the share of EUR denominated debt decreased by 0.2 p.p. and that of USD denominated debt decreased by 0.9 p.p.

### **Disbursements**<sup>5</sup>

In January – June 2011 **loans and deposits received** from non-residents amounted to EUR 2,430.4 million (6.2% of GDP) against EUR 2,891.1 million (8% of GDP) in the same period in 2010.

**General Government** received EUR 102.8 million, which was EUR 9.6 million less compared to the amount received in January – June 2010 (EUR 112.4 million)<sup>3</sup>.

**Banks** received loans and deposits amounting to EUR 680.9 million (1.8% of GDP), which was EUR 162.7 million (19.3%) less compared to those received in January – June 2010 (EUR 843.5 million, 2.3% of GDP).

**Other Sectors** received credits amounting to EUR 649.2 million or EUR 64 million (10.9%) more compared to January – June 2010 (EUR 585.1 million, 1.6% of GDP).

**Intercompany lending** amounted to EUR 997.5 million (2.6% of GDP), and it decreased by EUR 352.5 million (26.1%) compared to January – June 2010 (EUR 1350.1 million, 3.7% of GDP).

In January – June 2011 **the declared new loans received from non-residents** amounted to EUR 1,553.2 million (1,269 loans), which was a decrease of EUR 113.8 million (486 loans less) relative to the same period in 2010 (EUR 1,667 million, 1,755 loans). In comparison with January – June 2010, the stock of the declared new intercompany loans decreased by EUR 386.8 million (33.2%), reaching EUR 777.8 million and the stock of other loans increased by EUR 273 million (54.4%) and amounted to EUR 775.4 million.

In January – June 2011 97.6% of the stock of the declared loans were in EUR. The average weighted interest rate on those loans in EUR was 4.1%, marking an increase of 0.7 p.p. compared to the same period of 2010.

---

<sup>5</sup> Excluding revolving and trade credits.

### **Gross External Debt Service**<sup>6</sup>

In January – June 2011 **gross external debt service** amounted to EUR 3,181.9 million (8.2% of GDP) against EUR 4,256.7 million (11.8% of GDP) in the same period in 2010.

In January – June 2011 **General Government external debt service** amounted to EUR 282.3 million (0.7% of GDP), against EUR 285.6 million (0.8% of GDP) in the same period in 2010.

In January – June 2011 **Banks' external debt service** amounted to EUR 1,046.2 million (2.7% of GDP), against EUR 2,009.8 million (5.6% of GDP) in the same period in 2010.

In January – June 2011 **Other Sectors' external debt service** amounted to EUR 678.6 million (1.7% of GDP), against EUR 520.5 million (1.4% of GDP) in the same period in 2010.

For the reporting period of 2011 **service of Intercompany lending** amounted to EUR 1,174.7 million (3% of GDP), against EUR 1,440.8 million (4% of GDP) in the same period in 2010.

### **Net Flow**<sup>7</sup>

**Total net flow** in January – June 2011 was negative, amounting to EUR 447.8 million (1.2% of GDP), against a negative one amounting to EUR 1,074.6 million (3% of GDP) in the same period in 2010.

**General Government's** net flow was negative and amounted to EUR 101.6 million (0.3% of GDP), against a negative one amounting to EUR 96.3 million in January – June 2010 (0.3% of GDP).

**Sector Banks** had a negative net flow amounting to EUR 341.6 million (0.9% of GDP) against a negative flow amounting to EUR 1,143.1 million (3.2% of GDP) in January – June 2010.

**Other Sectors** reported a positive net flow of EUR 79.2 million (0.2% of GDP) against a positive flow of EUR 159.1 million (0.4% of GDP) in January – June 2010.

**The net flow on item Direct Investment: Intercompany Lending** was negative, amounting to EUR 83.9 million (0.2% of GDP), against a positive one amounting to EUR 5.7 million in January – June 2010.

### **Net External Debt**<sup>8</sup>

As of end-June 2011 **net external debt** decreased compared to end-2010 by EUR 388.3 million, reaching EUR 17,421 million. The decrease was due to the relatively higher decrease (by EUR 472.2 million) of gross external debt in comparison with that of gross external assets (by EUR 84 million). As of end-June 2011 gross external assets amounted to EUR 18,786.3 million against EUR 18,870.2 million as of end-December 2010. As of end-June 2011 as a percent of GDP net external debt amounted to 44.8%, decreasing by 4.6 p.p. compared to end-2010 (49.4%).

As of end-June 2010 net external debt amounted to EUR 19,909.6 million, 55.3% of GDP.

---

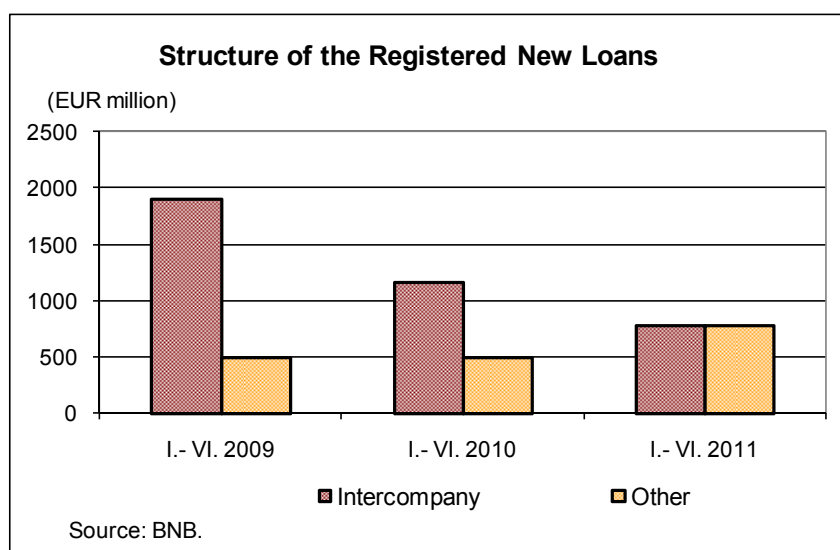
<sup>6</sup> Excluding payments on revolving and trade credits.

<sup>7</sup> In accordance with "External Debt Statistics: Guide for Compilers and Users", IMF (2003), p.262 net flow is the difference between total disbursements and total principal payments for the reporting period (excluding revolving and trade credits).

<sup>8</sup> Net external debt is calculated as the difference between gross external debt stock and gross external assets. Gross external assets include the BNB reserve assets, banks assets abroad and nonfinancial sector deposits abroad.

## Dynamics of the Declared New Loans<sup>1</sup>, January – June 2011

In January – June 2011 the declared new loans received from non-residents<sup>2</sup> amounted to EUR 1,553.2 million (1,269 loans), which was a decrease of EUR 113.8 million (486 loans less) relative to the same period in 2010 (EUR 1,667 million, 1,755 loans). From the declared new loans 770 were *intercompany*, and 499 were *other loans*. In comparison with January – June 2010, the stock of the declared new *intercompany loans* decreased by EUR 386.8 million (33.2%), reaching EUR 777.8 million and the stock of *other loans* increased by EUR 273 million (54.4%) and amounted to EUR 775.4 million.



- **Currency Structure**

In January – June 2011 the greatest share was formed by the loans in EUR – 97.6% of the stock of declared loans, against 97.1% in the same period of 2010 (Table 1). The share of loans in USD amounted to 2.2%, against 2.4% in January – June 2010.

### CURRENCY STRUCTURE

Table 1

|                 | Intercompany Loans |        |                   |       | Other Loans |        |                   |       | Total  |        |                   |        |
|-----------------|--------------------|--------|-------------------|-------|-------------|--------|-------------------|-------|--------|--------|-------------------|--------|
|                 | in USD             | in EUR | in other currency | total | in USD      | in EUR | in other currency | total | in USD | in EUR | in other currency | total  |
| I.- VI. 2010 г. | 1.1%               | 68.6%  | 0.1%              | 69.9% | 1.3%        | 28.4%  | 0.4%              | 30.1% | 2.4%   | 97.1%  | 0.6%              | 100.0% |
| I.- VI. 2011 г. | 1.3%               | 48.7%  | 0.0%              | 50.1% | 0.9%        | 48.9%  | 0.2%              | 49.9% | 2.2%   | 97.6%  | 0.2%              | 100.0% |

<sup>1</sup> Declared by residents new loans, which are to be lent by non-residents.

<sup>2</sup> The moment of declaration does not necessarily coincide with the moment of lending.



- **Interest Rate Structure**

With regard to the interest rate structure (Table 2) in January – June 2011 the share of loans with fixed interest rates was 45.8%, and of loans with floating interest rates – 41.7%. In January – June 2010, 22.1% of the declared new loans were with floating interest rates.

### INTEREST RATE STRUCTURE

Table 2

|                                 | I.- VI. 2010 r.* |                  |               | I.- VI. 2011 r.* |                  |               |
|---------------------------------|------------------|------------------|---------------|------------------|------------------|---------------|
|                                 | Long-Term Loans  | Short-Term Loans | Total         | Long-Term Loans  | Short-Term Loans | Total         |
| Fixed Interest Rate             | 18.6%            | 27.3%            | 45.9%         | 27.3%            | 18.6%            | 45.8%         |
| Floating Interest Rate          | 3.4%             | 18.7%            | 22.1%         | 25.4%            | 16.3%            | 41.7%         |
| Other Types of Interest Rates** | 10.4%            | 8.6%             | 19.0%         | 3.0%             | 2.1%             | 5.1%          |
| Interest - Free                 | 1.3%             | 11.7%            | 13.0%         | 3.6%             | 3.7%             | 7.3%          |
| <b>TOTAL</b>                    | <b>33.8%</b>     | <b>66.2%</b>     | <b>100.0%</b> | <b>59.3%</b>     | <b>40.7%</b>     | <b>100.0%</b> |

\*Source: BNB (Register of non-guaranteed external debt of Other Sectors) – using data from loan declarations. The percentage shares are calculated using the total declared new loans as a base.

\*\*These encompass interest payment schemes, which utilize more than one interest rate level or for which the interest cannot be defined by the debtor at the time of loan declaration.

In January – June 2011 the weighted average interest rate on the declared new loans in USD (Table 3) was 3.6% and was by 1.5 p.p. lower than in the same period of 2010. For *intercompany loans* (in USD) the interest rate level increased by 1.2 p.p. and reached 3.9%, and for *other loans* (in USD) it reached 3.3%, decreasing by 3.9 p.p. compared to January – June 2010 (7.1%).

### INTEREST RATE LEVELS<sup>3</sup>

Table 3

|                        | Intercompany Loans |             | Other Loans |             | Total       |             |
|------------------------|--------------------|-------------|-------------|-------------|-------------|-------------|
|                        | in USD             | in EUR      | in USD      | in EUR      | in USD      | in EUR      |
| IV.2010                | 1.1%               | 4.3%        | 3.1%        | 5.0%        | 2.4%        | 4.5%        |
| V.2010                 | 1.7%               | 2.0%        | 6.0%        | 4.2%        | 3.6%        | 2.5%        |
| VI.2010                | 3.0%               | 3.2%        | 7.8%        | 3.5%        | 5.7%        | 3.2%        |
| <b>I.- VI. 2010 r.</b> | <b>3.0%</b>        | <b>3.2%</b> | <b>7.8%</b> | <b>3.5%</b> | <b>5.7%</b> | <b>3.2%</b> |
| IV.2011 r.             | 5.0%               | 3.9%        | 5.3%        | 3.7%        | 5.0%        | 3.7%        |
| V.2011 r.              | 4.7%               | 3.5%        | 4.5%        | 3.7%        | 4.7%        | 3.6%        |
| VI.2011 r.             | 4.7%               | 3.5%        | 4.5%        | 3.7%        | 4.7%        | 3.6%        |
| <b>I.- VI. 2011 r.</b> | <b>3.7%</b>        | <b>3.9%</b> | <b>3.6%</b> | <b>4.6%</b> | <b>3.7%</b> | <b>4.2%</b> |

In January – June 2011 the average weighted interest rate on the declared new loans in EUR was 4.1%, marking an increase of 0.7 p.p. compared to the same period of 2010. For *intercompany loans* (in EUR) the interest rate level increased by 0.2 p.p. to 3.9%, and for *other loans* (in EUR) it increased by 1.5 p.p. compared to the same period in the previous year (2.9%).

<sup>3</sup> The monthly interest rate data are strongly influenced by the terms of individual enterprise loans.

In January – June 2011 the average weighted interest rate on new long-term loans in USD from abroad was by 5.5 p.p. lower, in EUR – by 4.5 p.p. lower than the weighted average interest rates on long-term loans in USD (8.8%) and in EUR (9%), granted by local commercial banks to enterprises<sup>4</sup>. In the same period of 2010 the interest rates for long-term loans in USD abroad was lower by 4 p.p. than those in the country and that in EUR – by 4.5 p.p. lower.

- **Weighted Average Maturity**

The maturity of the declared new loans in January – June 2011 reached 5 years and 2 months against 3 years and 6 months in the same period of 2010. The weighted average maturity of the *intercompany loans* reached 4 years and 7 months in January – June 2011, against 2 years and 3 months in the same period of 2010, and of *other loans* reached 5 years and 8 months in the reporting period, against 6 years and 5 months in January – June 2010 (Table 4).

#### WEIGHTED AVERAGE MATURITY

Table 4  
(years, months)

|                    | I.- VI. 2010 r. | I.- VI. 2011 r. |
|--------------------|-----------------|-----------------|
| Intercompany Loans | 2.03            | 4.07            |
| Other Loans        | 6.05            | 5.08            |
| <b>Total</b>       | <b>3.06</b>     | <b>5.02</b>     |

In January – June 2011 declared new long-term loans, as a share of the total stock of new loans, reached 59.3% (Table 5) against 33.8% in the same period of 2010.

#### SHARE STRUCTURE OF LONG- AND SHORT-TERM LOANS

Table 5

|                    | I.- VI. 2010 r. |                  |               | I.- VI. 2011 r. |                  |               |
|--------------------|-----------------|------------------|---------------|-----------------|------------------|---------------|
|                    | Long-Term Loans | Short-Term Loans | Total         | Long-Term Loans | Short-Term Loans | Total         |
| Intercompany Loans | 23.3%           | 76.7%            | 100.0%        | 51.6%           | 48.4%            | 100.0%        |
| Other Loans        | 58.2%           | 41.8%            | 100.0%        | 67.0%           | 33.0%            | 100.0%        |
| <b>Total</b>       | <b>33.8%</b>    | <b>66.2%</b>     | <b>100.0%</b> | <b>59.3%</b>    | <b>40.7%</b>     | <b>100.0%</b> |

<sup>4</sup> The issue "Interest Rate Statistics" of the BNB is the source of data on interest rates on new long-term loans, granted to enterprises by local banks.

# TABLES

(MILLION EUR)

Table 1

**GROSS EXTERNAL DEBT<sup>1</sup>**  
(by Institutional Sectors)

|   | VI. 2010       |              | XII. 2010      |              | V. 2011        |             | VI. 2011       |             | VI. 11/V. 11 |             | VI. 11/XII. 10 |             | VI. 11/VI. 10  |              |
|---|----------------|--------------|----------------|--------------|----------------|-------------|----------------|-------------|--------------|-------------|----------------|-------------|----------------|--------------|
|   | EUR million    | % of GDP     | EUR million    | % of GDP     | EUR million    | % of GDP    | EUR million    | % of GDP    | EUR million  | %           | EUR million    | %           | EUR million    | %            |
| <b>General Government<sup>2</sup></b>             | <b>2873.2</b>  | <b>8.0</b>   | <b>2873.0</b>  | <b>8.0</b>   | <b>2763.4</b>  | <b>7.1</b>  | <b>2742.3</b>  | <b>7.1</b>  | <b>-21.0</b> | <b>-0.8</b> | <b>-130.7</b>  | <b>-4.6</b> | <b>-130.9</b>  | <b>-4.6</b>  |
| <b>Short-term</b>                                 | <b>0.0</b>     | <b>0.0</b>   | <b>0.0</b>     | <b>0.0</b>   | <b>0.0</b>     | <b>0.0</b>  | <b>0.0</b>     | <b>0.0</b>  | <b>0.0</b>   | <b>-</b>    | <b>0.0</b>     | <b>-</b>    | <b>0.0</b>     | <b>-</b>     |
| <b>Long-term</b>                                  | <b>2873.2</b>  | <b>8.0</b>   | <b>2873.0</b>  | <b>8.0</b>   | <b>2763.4</b>  | <b>7.1</b>  | <b>2742.3</b>  | <b>7.1</b>  | <b>-21.0</b> | <b>-0.8</b> | <b>-130.7</b>  | <b>-4.6</b> | <b>-130.9</b>  | <b>-4.6</b>  |
| Bonds and Notes <sup>3</sup>                      | 1020.0         | 2.8          | 1003.6         | 2.8          | 888.9          | 2.3         | 888.8          | 2.3         | -0.1         | 0.0         | -114.8         | -11.4       | -131.2         | -12.9        |
| Loans   | 1853.2         | 5.1          | 1869.4         | 5.2          | 1874.5         | 4.8         | 1853.5         | 4.8         | -20.9        | -1.1        | -15.9          | -0.8        | 0.3            | 0.0          |
| <b>Monetary Authorities</b>                       | <b>0.0</b>     | <b>0.0</b>   | <b>0.0</b>     | <b>0.0</b>   | <b>0.0</b>     | <b>0.0</b>  | <b>0.0</b>     | <b>0.0</b>  | <b>0.0</b>   | <b>-</b>    | <b>0.0</b>     | <b>-</b>    | <b>0.0</b>     | <b>-</b>     |
| <b>Short-term</b>                                 | <b>0.0</b>     | <b>0.0</b>   | <b>0.0</b>     | <b>0.0</b>   | <b>0.0</b>     | <b>0.0</b>  | <b>0.0</b>     | <b>0.0</b>  | <b>0.0</b>   | <b>-</b>    | <b>0.0</b>     | <b>-</b>    | <b>0.0</b>     | <b>-</b>     |
| <b>Long-term</b>                                  | <b>0.0</b>     | <b>0.0</b>   | <b>0.0</b>     | <b>0.0</b>   | <b>0.0</b>     | <b>0.0</b>  | <b>0.0</b>     | <b>0.0</b>  | <b>0.0</b>   | <b>-</b>    | <b>0.0</b>     | <b>-</b>    | <b>0.0</b>     | <b>-</b>     |
| <b>Banks<sup>4</sup></b>                          | <b>7272.5</b>  | <b>20.2</b>  | <b>6862.1</b>  | <b>19.0</b>  | <b>6326.0</b>  | <b>16.3</b> | <b>6519.3</b>  | <b>16.8</b> | <b>193.3</b> | <b>3.1</b>  | <b>-342.7</b>  | <b>-5.0</b> | <b>-753.1</b>  | <b>-10.4</b> |
| <b>Short-term</b>                                 | <b>5580.3</b>  | <b>15.5</b>  | <b>5355.0</b>  | <b>14.9</b>  | <b>4663.1</b>  | <b>12.0</b> | <b>4840.7</b>  | <b>12.4</b> | <b>177.6</b> | <b>3.8</b>  | <b>-514.3</b>  | <b>-9.6</b> | <b>-739.6</b>  | <b>-13.3</b> |
| Loans   | 697.0          | 1.9          | 530.9          | 1.5          | 499.5          | 1.3         | 498.1          | 1.3         | -1.4         | -0.3        | -32.8          | -6.2        | -198.9         | -28.5        |
| Currency and deposits                             | 4833.5         | 13.4         | 4762.5         | 13.2         | 4088.8         | 10.5        | 4279.1         | 11.0        | 190.3        | 4.7         | -483.4         | -10.2       | -554.5         | -11.5        |
| Other debt liabilities                            | 49.7           | 0.1          | 61.6           | 0.2          | 74.8           | 0.2         | 63.5           | 0.2         | -11.3        | -15.1       | 1.9            | 3.1         | 13.8           | 27.8         |
| <b>Long-term</b>                                  | <b>1692.2</b>  | <b>4.7</b>   | <b>1507.1</b>  | <b>4.2</b>   | <b>1662.9</b>  | <b>4.3</b>  | <b>1678.6</b>  | <b>4.3</b>  | <b>15.7</b>  | <b>0.9</b>  | <b>171.6</b>   | <b>11.4</b> | <b>-13.6</b>   | <b>-0.8</b>  |
| Bonds and Notes                                   | 39.8           | 0.1          | 38.8           | 0.1          | 26.3           | 0.1         | 26.3           | 0.1         | 0.0          | 0.0         | -12.6          | -32.4       | -13.6          | -34.1        |
| Loans   | 1652.4         | 4.6          | 1468.2         | 4.1          | 1636.6         | 4.2         | 1652.4         | 4.2         | 15.7         | 1.0         | 184.1          | 12.5        | 0.0            | 0.0          |
| <b>Other Sectors<sup>5</sup></b>                  | <b>12195.0</b> | <b>33.8</b>  | <b>12196.4</b> | <b>33.8</b>  | <b>12498.6</b> | <b>32.1</b> | <b>12454.7</b> | <b>32.0</b> | <b>-43.8</b> | <b>-0.4</b> | <b>258.4</b>   | <b>2.1</b>  | <b>259.7</b>   | <b>2.1</b>   |
| <b>Short-term</b>                                 | <b>6144.0</b>  | <b>17.1</b>  | <b>6150.0</b>  | <b>17.1</b>  | <b>6004.4</b>  | <b>15.4</b> | <b>6017.4</b>  | <b>15.5</b> | <b>13.0</b>  | <b>0.2</b>  | <b>-132.6</b>  | <b>-2.2</b> | <b>-126.6</b>  | <b>-2.1</b>  |
| Money Market Instruments                          | 0.0            | 0.0          | 0.0            | 0.0          | 0.0            | 0.0         | 0.0            | 0.0         | 0.0          | -           | 0.0            | -           | 0.0            | -            |
| Loans   | 4642.2         | 12.9         | 4796.1         | 13.3         | 4650.5         | 12.0        | 4663.5         | 12.0        | 13.0         | 0.3         | -132.6         | -2.8        | 21.3           | 0.5          |
| Trade credits                                     | 1501.8         | 4.2          | 1353.9         | 3.8          | 1353.9         | 3.5         | 1353.9         | 3.5         | 0.0          | 0.0         | 0.0            | 0.0         | -147.9         | -9.8         |
| <b>Long-term</b>                                  | <b>6051.1</b>  | <b>16.8</b>  | <b>6046.4</b>  | <b>16.8</b>  | <b>6494.2</b>  | <b>16.7</b> | <b>6437.3</b>  | <b>16.6</b> | <b>-56.9</b> | <b>-0.9</b> | <b>397.0</b>   | <b>6.5</b>  | <b>386.3</b>   | <b>6.4</b>   |
| Bonds and Notes                                   | 189.5          | 0.5          | 199.9          | 0.6          | 200.5          | 0.5         | 161.5          | 0.4         | -39.0        | -19.4       | -38.4          | -19.2       | -28.0          | -14.8        |
| Loans   | 5861.6         | 16.3         | 5846.5         | 16.2         | 6293.7         | 16.2        | 6275.9         | 16.1        | -17.9        | -0.3        | 429.4          | 7.3         | 414.3          | 7.1          |
| Other debt liabilities                            | 0.0            | 0.0          | 0.0            | 0.0          | 0.0            | 0.0         | 0.0            | 0.0         | 0.0          | -           | 0.0            | -           | 0.0            | -            |
| <b>V. Direct investment: intercompany lending</b> | <b>14964.7</b> | <b>41.5</b>  | <b>14748.0</b> | <b>40.9</b>  | <b>14540.8</b> | <b>37.4</b> | <b>14490.9</b> | <b>37.3</b> | <b>-49.9</b> | <b>-0.3</b> | <b>-257.2</b>  | <b>-1.7</b> | <b>-473.9</b>  | <b>-3.2</b>  |
| <b>GROSS EXTERNAL DEBT (H+I+II+IV+V)</b>          | <b>37305.4</b> | <b>103.5</b> | <b>36679.5</b> | <b>101.8</b> | <b>36128.7</b> | <b>92.9</b> | <b>36207.2</b> | <b>93.1</b> | <b>78.5</b>  | <b>0.2</b>  | <b>-472.2</b>  | <b>-1.3</b> | <b>-1098.2</b> | <b>-2.9</b>  |

Table 1

**GROSS EXTERNAL DEBT<sup>1</sup>**  
**(by Institutional Sectors)**

|  | VI. 2010    |          | XII. 2010   |          | V. 2011     |          | VI. 2011    |          | VI. 11/V. 11 |      | VI. 11/XII. 10 |      | VI. 11/VI. 10 |      |
|--|-------------|----------|-------------|----------|-------------|----------|-------------|----------|--------------|------|----------------|------|---------------|------|
|  | EUR million | % of GDP | EUR million | % of GDP | EUR million | % of GDP | EUR million | % of GDP | EUR million  | %    | EUR million    | %    | EUR million   | %    |
| Long-term external debt <sup>6</sup>         | 25581.2     | 71.0     | 25174.5     | 69.9     | 25461.3     | 65.5     | 25349.1     | 65.2     | -112.1       | -0.4 | 174.6          | 0.7  | -232.0        | -0.9 |
| Short-term external debt                     | 11724.2     | 32.5     | 11505.0     | 31.9     | 10667.5     | 27.4     | 10858.1     | 27.9     | 190.6        | 1.8  | -646.9         | -5.6 | -866.1        | -7.4 |
| Public and publicly guaranteed external debt | 4277.7      | 11.9     | 4287.5      | 11.9     | 4212.3      | 10.8     | 4173.4      | 10.7     | -38.8        | -0.9 | -114.1         | -2.7 | -104.3        | -2.4 |
| Private non-guaranteed external debt         | 33027.7     | 91.7     | 32392.0     | 89.9     | 31916.5     | 82.1     | 32033.8     | 82.4     | 117.3        | 0.4  | -358.2         | -1.1 | -993.9        | -3.0 |
| Revolving credits <sup>7</sup>               | 4152.6      | 11.5     | 3917.9      | 10.9     | 3894.8      | 10.0     | 3824.2      | 9.8      | -70.6        | -1.8 | -93.7          | -2.4 | -328.4        | -7.9 |
| Trade Credits <sup>7,8</sup>                 | 2644.1      | 7.3      | 2408.7      | 6.7      | 2408.7      | 6.2      | 2408.7      | 6.2      | 0.0          | 0.0  | 0.0            | 0.0  | -235.3        | -8.9 |
| Credits on demand <sup>7</sup>               | 9091.3      | 25.2     | 9075.6      | 25.2     | 8817.5      | 22.7     | 8767.9      | 22.5     | -49.6        | -0.6 | -307.7         | -3.4 | -323.4        | -3.6 |
| incl. intercompany loans                     | 5721.4      | 15.9     | 5734.5      | 15.9     | 5425.0      | 13.9     | 5363.9      | 13.8     | -61.2        | -1.1 | -370.6         | -6.5 | -357.5        | -6.2 |
| incl. banks' loans                           | 184.9       | 0.5      | 181.2       | 0.5      | 179.6       | 0.5      | 178.3       | 0.5      | -1.3         | -0.7 | -2.9           | -1.6 | -6.6          | -3.6 |
| Long-term credits with no stated maturity    |             |          |             |          |             |          |             |          |              |      |                |      |               |      |
| incl. intercompany loans                     |             |          |             |          | 609.3       | 1.6      | 609.4       | 1.6      | 0.1          | 0.0  |                |      |               |      |
| incl. banks' loans                           |             |          |             |          | 245.6       | 0.6      | 256.1       | 0.7      | 10.5         | 4.3  |                |      |               |      |
|  |             |          |             |          | 75.5        | 0.2      | 75.4        | 0.2      | -0.1         | -0.1 |                |      |               |      |
| Allocations of SDR <sup>9</sup>              | 736.2       | 2.0      | 708.4       | 2.0      | 661.0       | 1.7      | 676.5       | 1.7      | 15.5         | 2.3  | -32.0          | -4.5 | -59.8         | -8.1 |

<sup>1</sup> Preliminary data. The Euro equivalent is calculated using the monthly e.o.p. exchange rates of the respective foreign currencies.

<sup>2</sup> Data source: The Register of Government and Government-guaranteed Debt of the Ministry of Finance. Preliminary data for June 2011 as of July 26, 2011.

Debt liabilities of the public companies and the government guaranteed debt are excluded.

<sup>3</sup> Brady bonds, Eurobonds, Global bonds and government securities (denominated in BGN and in foreign currency), purchased by non-residents are included.

The calculations of the item *Bond and Notes* follow the residence concept: the bonds, issued by residents in the international markets and held by residents are subtracted from the external debt.

<sup>4</sup> Data source: banks (incl. private and state banks). Deposits related to contingent liabilities are excluded.

<sup>5</sup> Data source: Local individuals and legal entities (incl. state owned companies and government guaranteed loans from the Register of Government and Government-guaranteed Debt of the Ministry of Finance).

Intercompany loans are excluded. Data comprise only those credits (incl. revolving and intercompany lending) that are declared before the BNB and for which the BNB has received information.

<sup>6</sup> In accordance with the *EXTERNAL DEBT STATISTICS, Guide for Compilers and Users, IMF 2003 p. 3.14* and p. 7.5 liabilities related to Direct investment are included in the long-term debt.

<sup>7</sup> The stock of the revolving credits, trade credits and the credits, payable on demand is included in the gross external debt stock of the country.

<sup>8</sup> Due to the quarterly reporting of firms the data for 2011 are subject to revisions.

<sup>9</sup> In accordance with the fifth edition of the Balance of Payments Manual (BPM5) and in line with the legal acts in force, the treatment of SDR allocations as reserve assets (and not as long-term liabilities as required by the BPM6) shall be maintained until 2014 in national and European statistics.

Until then it shall be shown as a memo item.

Table 2

**GROSS EXTERNAL DEBT<sup>1</sup>**  
**(by Institutional Sector)**

|   | XII. 2005 | XII. 2006 | XII. 2007 | XII. 2008 | XII. 2009 | VI. 2010 | VII. 2010 | VIII. 2010 | IX. 2010 | X. 2010 | XI. 2010 | XII. 2010 | I. 2011 | II. 2011 | III. 2011 | IV. 2011 | V. 2011 | VI. 2011 |         |
|---|-----------|-----------|-----------|-----------|-----------|----------|-----------|------------|----------|---------|----------|-----------|---------|----------|-----------|----------|---------|----------|---------|
| <b>General Government<sup>2</sup></b>             |           |           |           |           |           |          |           |            |          |         |          |           |         |          |           |          |         |          |         |
| <b>Short-term</b>                                 | 4455.2    | 3702.2    | 3099.6    | 2525.3    | 2827.9    | 2873.2   | 2834.3    | 2852.6     | 2771.6   | 2766.2  | 2797.9   | 2873.0    | 2770.8  | 2761.4   | 2769.1    | 2750.5   | 2763.4  | 2742.3   | 2742.3  |
| <b>Long-term</b>                                  | 4455.2    | 3702.2    | 3099.6    | 2525.3    | 2827.9    | 2873.2   | 2834.3    | 2852.6     | 2771.6   | 2766.2  | 2797.9   | 2873.0    | 2770.8  | 2761.4   | 2769.1    | 2750.5   | 2763.4  | 2742.3   | 2742.3  |
| Bonds and Notes <sup>3</sup>                      | 1727.0    | 1604.6    | 1396.6    | 966.9     | 1021.8    | 1020.0   | 992.1     | 1006.8     | 972.8    | 975.2   | 1004.9   | 1003.6    | 883.4   | 875.2    | 879.3     | 876.5    | 888.9   | 888.8    | 888.8   |
| Loans   | 2728.1    | 2097.7    | 1852.3    | 1558.4    | 1806.1    | 1853.2   | 1842.2    | 1845.9     | 1798.8   | 1791.1  | 1793.0   | 1869.4    | 1887.5  | 1886.2   | 1889.8    | 1874.1   | 1874.5  | 1853.5   | 1853.5  |
| <b>Monetary Authorities</b>                       |           |           |           |           |           |          |           |            |          |         |          |           |         |          |           |          |         |          |         |
| <b>Short-term</b>                                 | 0.0       | 0.0       | 0.0       | 0.0       | 0.0       | 0.0      | 0.0       | 0.0        | 0.0      | 0.0     | 0.0      | 0.0       | 0.0     | 0.0      | 0.0       | 0.0      | 0.0     | 0.0      | 0.0     |
| <b>Long-term</b>                                  | 0.0       | 0.0       | 0.0       | 0.0       | 0.0       | 0.0      | 0.0       | 0.0        | 0.0      | 0.0     | 0.0      | 0.0       | 0.0     | 0.0      | 0.0       | 0.0      | 0.0     | 0.0      | 0.0     |
| <b>Banks<sup>4</sup></b>                          |           |           |           |           |           |          |           |            |          |         |          |           |         |          |           |          |         |          |         |
| <b>Short-term</b>                                 | 2876.6    | 3549.0    | 5770.8    | 9072.0    | 8378.8    | 7272.5   | 7042.6    | 6687.3     | 7102.2   | 6715.8  | 6780.8   | 6882.1    | 6683.1  | 6617.6   | 6449.3    | 6269.8   | 6326.0  | 6519.3   | 6519.3  |
| <b>Loans</b>                                      | 1921.3    | 2617.1    | 4327.9    | 6862.3    | 6283.9    | 5980.3   | 5668.8    | 5363.8     | 5739.8   | 5355.0  | 5355.9   | 5355.0    | 5057.7  | 5022.6   | 4840.1    | 4657.6   | 4663.1  | 4840.7   | 4840.7  |
| Other debt liabilities                            | 894.3     | 931.9     | 1442.8    | 2209.7    | 2094.9    | 1692.2   | 1383.8    | 1303.4     | 1362.4   | 1360.8  | 1421.9   | 1507.1    | 1605.0  | 1595.0   | 1602.2    | 1612.2   | 1629.9  | 1678.6   | 1678.6  |
| <b>Bonds and Notes</b>                            | 1056.6    | 141.6     | 132.5     | 2165.2    | 2055.0    | 1652.4   | 1344.0    | 1263.6     | 1322.6   | 1321.0  | 1382.1   | 1468.2    | 1566.6  | 1556.2   | 1582.9    | 1585.9   | 1636.6  | 1652.4   | 1652.4  |
| <b>Other Sectors<sup>5</sup></b>                  |           |           |           |           |           |          |           |            |          |         |          |           |         |          |           |          |         |          |         |
| <b>Short-term</b>                                 | 4236.5    | 7177.0    | 9394.8    | 12039.5   | 12002.8   | 12195.0  | 12120.3   | 12105.7    | 11974.1  | 12045.3 | 12045.3  | 12196.4   | 12254.1 | 12244.6  | 12387.9   | 12330.9  | 12498.6 | 12454.7  | 12454.7 |
| <b>Loans</b>                                      | 3540.1    | 3540.1    | 5056.1    | 6276.6    | 6046.6    | 6144.0   | 6127.5    | 6121.5     | 5976.4   | 6001.0  | 6022.7   | 6150.4    | 5946.7  | 5989.2   | 6019.9    | 5963.7   | 6004.4  | 6017.4   | 6017.4  |
| Money/Market Instruments                          | 0.0       | 0.0       | 0.0       | 0.0       | 0.0       | 0.0      | 0.0       | 0.0        | 0.0      | 0.0     | 0.0      | 0.0       | 0.0     | 0.0      | 0.0       | 0.0      | 0.0     | 0.0      | 0.0     |
| Trade credits                                     | 892.6     | 1924.1    | 3470.1    | 4521.0    | 4432.0    | 4842.2   | 4642.8    | 4653.5     | 4622.5   | 4647.1  | 4668.8   | 4796.1    | 4594.8  | 4605.3   | 4666.0    | 4814.8   | 4650.5  | 4663.5   | 4663.5  |
| <b>Long-term</b>                                  | 1069.8    | 1437.0    | 1586.0    | 1785.6    | 1614.6    | 1501.8   | 1484.8    | 1486.0     | 1353.9   | 1353.9  | 1353.9   | 1353.9    | 1353.9  | 1353.9   | 1353.9    | 1353.9   | 1353.9  | 1353.9   | 1353.9  |
| <b>Bonds and Notes</b>                            | 2224.0    | 3637.0    | 4338.8    | 5762.9    | 5996.2    | 6051.1   | 5984.2    | 5984.2     | 5997.7   | 6046.4  | 6022.8   | 6046.4    | 6305.3  | 6285.4   | 6368.0    | 6362.2   | 6494.2  | 6437.3   | 6437.3  |
| Loans   | 37.1      | 311.7     | 308.6     | 289.8     | 221.3     | 186.1    | 186.4     | 186.4      | 186.1    | 184.9   | 208.8    | 199.9     | 202.4   | 201.9    | 201.0     | 200.1    | 200.5   | 161.5    | 161.5   |
| Other debt liabilities                            | 2186.9    | 3325.3    | 4030.1    | 5473.1    | 5734.9    | 5861.6   | 5804.1    | 5797.9     | 5811.5   | 5864.6  | 5813.8   | 5846.5    | 6102.9  | 6083.6   | 6167.0    | 6162.1   | 6293.7  | 6275.9   | 6275.9  |
| <b>V. Direct investment: intercompany lending</b> |           |           |           |           |           |          |           |            |          |         |          |           |         |          |           |          |         |          |         |
| <b>Short-term</b>                                 | 4138.6    | 6262.6    | 10751.6   | 13520.3   | 14514.9   | 14964.7  | 14885.1   | 14866.4    | 14658.3  | 14557.1 | 14730.0  | 14748.0   | 15112.8 | 15151.5  | 14673.8   | 14631.6  | 14540.8 | 14480.9  | 14480.9 |
| <b>Long-term</b>                                  | 15506.9   | 20690.9   | 29016.8   | 37187.2   | 37724.5   | 37305.4  | 36882.4   | 36491.9    | 36506.2  | 36089.6 | 36354.0  | 36679.5   | 36800.9 | 36775.1  | 36280.1   | 35982.8  | 36128.7 | 36207.2  | 36207.2 |

Memo items:

Long-term external debt<sup>6</sup>

Short-term external debt

Public and publicly guaranteed external debt

incl. government-guaranteed debt<sup>6</sup>

Private non-guaranteed external debt

Revolving credits<sup>7</sup>Trade Credits<sup>7,8</sup>Credits on demand<sup>7</sup>

incl. intercompany loans

incl. banks' loans

Allocations of SDR<sup>10</sup><sup>1</sup> Preliminary data. The Euro equivalent is calculated using the monthly e.o.p. exchange rates of the respective foreign currencies.<sup>2</sup> Data source: The Register of Government and Government-guaranteed Debt of the Ministry of Finance. Preliminary data for June 2011 as of July 26, 2011.<sup>3</sup> Debt liabilities of the public companies and the government-guaranteed debt are excluded.<sup>4</sup> Brady bonds, Eurobonds, Global bonds and government securities (denominated in BGN and in foreign currency), purchased by non-residents, are included.<sup>5</sup> The calculations of the item *Bonds and Notes* follow the residence concept: the bonds, issued by residents in the international markets and held by residents are subtracted from the external debt.<sup>6</sup> Data source: banks (incl. private and state banks). Deposits related to contingent liabilities are excluded.<sup>7</sup> Data source: Local individuals and legal entities (incl. state owned companies and government-guaranteed loans from the Register of Government and Government-guaranteed Debt of the Ministry of Finance). Intercompany loans are excluded. Data comprise only those credits (incl. revolving and intercompany lending) that are declared before the BNB and for which the BNB has received information.<sup>8</sup> In accordance with the EXTERNAL DEBT STATISTICS: Guide for Compilers and Users, IMF 2003 p. 3.14 and p. 7.5 liabilities related to Direct investment are included in the long-term debt.<sup>9</sup> The stock of the revolving credits, trade credits and the credits, payable on demand is included in the gross external debt stock of the country.<sup>10</sup> Due to the quarterly reporting of firms the data for 2011 are subject to revisions.<sup>11</sup> To date the publicly guaranteed external debt encompasses the government-guaranteed external debt.<sup>12</sup> In accordance with the fifth edition of the Balance of Payments Manual (BPM5) and in line with the legal acts in force, the treatment of SDR allocations as reserve assets (and not as long-term liabilities as required by the BPM5) shall be maintained until 2014. In national and European statistics.

Until then it shall be shown as a memo item.

Table 3

MATURITY STRUCTURE OF THE GROSS EXTERNAL DEBT<sup>1</sup>

|  | (EUR million)  |                |                |                |                |                |                |                |                |                |                |                |                |                |                |                |                |                |                                     |                           |
|--|----------------|----------------|----------------|----------------|----------------|----------------|----------------|----------------|----------------|----------------|----------------|----------------|----------------|----------------|----------------|----------------|----------------|----------------|-------------------------------------|---------------------------|
|  | XII. 2005      | XII. 2006      | XII. 2007      | XII. 2008      | XII. 2009      | VI. 2010       | VII. 2010      | VIII. 2010     | IX. 2010       | X. 2010        | XI. 2010       | XII. 2010      | I. 2011        | II. 2011       | III. 2011      | IV. 2011       | V. 2011        | VI. 2011       | VI. 2011 – XII. 2010<br>EUR million | VI. 2011 – XII. 2010<br>% |
| <b>Long-Term External Debt</b>                             | <b>7434.5</b>  | <b>8271.1</b>  | <b>8881.2</b>  | <b>10498.0</b> | <b>10879.0</b> | <b>10916.5</b> | <b>10210.8</b> | <b>10140.3</b> | <b>10131.6</b> | <b>10176.5</b> | <b>10242.4</b> | <b>10426.5</b> | <b>10681.7</b> | <b>10641.9</b> | <b>10746.3</b> | <b>10724.9</b> | <b>10920.5</b> | <b>10888.3</b> | <b>431.8</b>                        | <b>-4.1</b>               |
| General Government <sup>2</sup>                            | 4455.2         | 3702.2         | 3099.6         | 2525.3         | 2827.9         | 2873.2         | 2834.3         | 2852.6         | 2771.6         | 2786.2         | 2797.9         | 2873.0         | 2770.8         | 2761.4         | 2789.1         | 2750.5         | 2763.4         | 2742.3         | -130.7                              | -4.6                      |
| Monetary Authorities                                       | 0.0            | 0.0            | 0.0            | 0.0            | 0.0            | 0.0            | 0.0            | 0.0            | 0.0            | 0.0            | 0.0            | 0.0            | 0.0            | 0.0            | 0.0            | 0.0            | 0.0            | 0.0            | 0.0                                 | 0.0                       |
| Banks <sup>3</sup>   | 755.3          | 991.9          | 1442.8         | 2209.7         | 2094.9         | 1692.2         | 1383.8         | 1303.4         | 1362.4         | 1360.8         | 1421.9         | 1507.1         | 1605.5         | 1595.0         | 1609.2         | 1612.2         | 1662.9         | 1678.6         | 171.6                               | 11.4                      |
| Other Sectors <sup>4</sup>                                 | 2224.0         | 3637.0         | 4338.8         | 5762.9         | 5956.2         | 6051.1         | 5992.7         | 5984.2         | 5997.7         | 6049.5         | 6022.6         | 6046.4         | 6305.3         | 6285.4         | 6388.0         | 6362.2         | 6494.2         | 6437.3         | 381.0                               | 6.5                       |
| <b>Direct investment: intercompany lending<sup>5</sup></b> | <b>4138.6</b>  | <b>6262.6</b>  | <b>10751.6</b> | <b>13520.3</b> | <b>14514.9</b> | <b>14964.7</b> | <b>14885.1</b> | <b>14866.4</b> | <b>14658.3</b> | <b>14557.1</b> | <b>14730.0</b> | <b>14748.0</b> | <b>15112.8</b> | <b>15151.5</b> | <b>14673.8</b> | <b>14631.6</b> | <b>14540.8</b> | <b>14490.9</b> | <b>-257.2</b>                       | <b>-1.7</b>               |
| General Government <sup>2</sup>                            | 3933.8         | 6167.2         | 9384.0         | 13138.9        | 12330.6        | 11724.2        | 11786.5        | 11485.3        | 11716.2        | 11356.0        | 11381.6        | 11505.0        | 11006.4        | 10981.7        | 10860.0        | 10626.3        | 10667.5        | 10858.1        | -646.9                              | -5.6                      |
| Monetary Authorities                                       | 0.0            | 0.0            | 0.0            | 0.0            | 0.0            | 0.0            | 0.0            | 0.0            | 0.0            | 0.0            | 0.0            | 0.0            | 0.0            | 0.0            | 0.0            | 0.0            | 0.0            | 0.0            | 0.0                                 | 0.0                       |
| Banks <sup>3</sup>   | 1921.3         | 2617.1         | 4327.9         | 6862.3         | 6283.9         | 5580.3         | 5658.8         | 5363.8         | 5739.8         | 5355.0         | 5358.9         | 5355.0         | 5057.7         | 5022.6         | 4840.1         | 4657.6         | 4663.1         | 4840.7         | -514.3                              | -9.6                      |
| Other Sectors <sup>4</sup>                                 | 2012.5         | 3540.1         | 5056.1         | 6276.6         | 6046.6         | 6144.0         | 6127.7         | 6121.5         | 5976.4         | 6001.0         | 6022.7         | 6150.0         | 5948.7         | 5959.2         | 6019.9         | 5988.7         | 6004.4         | 6017.4         | -132.6                              | -2.2                      |
| <b>Total</b>   | <b>15506.9</b> | <b>20690.9</b> | <b>29016.8</b> | <b>37157.2</b> | <b>37724.5</b> | <b>37305.4</b> | <b>36892.4</b> | <b>36491.9</b> | <b>36506.2</b> | <b>36089.6</b> | <b>36354.0</b> | <b>36679.5</b> | <b>36800.9</b> | <b>36775.1</b> | <b>36280.1</b> | <b>35982.8</b> | <b>36128.7</b> | <b>36207.2</b> | <b>-472.2</b>                       | <b>-1.3</b>               |

<sup>1</sup> Preliminary data. The Euro equivalent is calculated using the monthly e.o.p. exchange rates of the respective foreign currencies.

<sup>2</sup> The division of the debt into short- and long-term is based on the original maturity.

<sup>3</sup> Data source: The Register of Government and Government-guaranteed Debt of the Ministry of Finance. Preliminary data for June 2011 as of July 26, 2011.

<sup>4</sup> Debt liabilities of the public companies and the government guaranteed debt are excluded.

<sup>5</sup> Data source: banks (incl. private and state banks). Deposits related to contingent liabilities are excluded.

<sup>6</sup> Data source: Local individuals and legal entities (incl. state owned companies and government guaranteed loans from the Register of Government and Government-guaranteed Debt of the Ministry of Finance). Intercompany loans are excluded.

<sup>7</sup> Data comprise only those credits that are declared before the BNB and for which the BNB has received information.

<sup>8</sup> In accordance with the EXTERNAL DEBT STATISTICS, Guide for Compilers and Users, MF 2003 p. 3.14 and p. 7.5 liabilities related to Direct Investment are included in the long-term debt.

Table 4

**GROSS EXTERNAL DEBT<sup>1</sup>**  
(by Instruments)

|   | (EUR million)  |                |                |                |                |                |                |                |                |                |                |                |                |                |                |                |                |                |                                     |                           |
|---|----------------|----------------|----------------|----------------|----------------|----------------|----------------|----------------|----------------|----------------|----------------|----------------|----------------|----------------|----------------|----------------|----------------|----------------|-------------------------------------|---------------------------|
|   | XII. 2005      | XII. 2006      | XII. 2007      | XII. 2008      | XII. 2009      | VI. 2010       | VII. 2010      | VIII. 2010     | IX. 2010       | X. 2010        | XI. 2010       | XII. 2010      | I. 2011        | II. 2011       | III. 2011      | IV. 2011       | V. 2011        | VI. 2011       | VI. 2011 - XII. 2010<br>EUR million | VI. 2011 - XII. 2010<br>% |
| Securities <sup>2</sup>                 | 1870.8         | 2236.8         | 1688.4         | 1301.2         | 1283.1         | 1249.3         | 1220.5         | 1233.0         | 1198.7         | 1199.9         | 1253.5         | 1242.4         | 1124.6         | 1115.8         | 1106.6         | 1102.8         | 1115.6         | 1076.5         | -165.8                              | -13.3                     |
| Loans <sup>3,4</sup>                    | 6927.8         | 8738.5         | 10947.4        | 14499.3        | 14895.5        | 14706.3        | 14372.7        | 14361.4        | 14056.4        | 14115.3        | 14151.1        | 14511.1        | 14826.3        | 14625.3        | 14811.0        | 14699.0        | 14954.8        | 14943.4        | 432.3                               | 3.0                       |
| Trade credits                           | 1069.8         | 1437.0         | 1986.0         | 1755.6         | 1614.6         | 1501.8         | 1484.8         | 1468.0         | 1353.9         | 1353.9         | 1353.9         | 1353.9         | 1353.9         | 1353.9         | 1353.9         | 1353.9         | 1353.9         | 1353.9         | 0.0                                 | 0.0                       |
| Deposits <sup>5</sup>                   | 1396.6         | 1900.1         | 3919.9         | 5974.6         | 5384.8         | 4833.5         | 4860.0         | 4514.3         | 5169.5         | 4808.3         | 4808.5         | 4762.5         | 4526.7         | 4473.9         | 4262.8         | 4125.9         | 4088.8         | 4279.1         | -463.4                              | -10.2                     |
| Other debt liabilities                  | 103.2          | 115.9          | 123.5          | 106.2          | 31.6           | 49.7           | 59.2           | 48.9           | 69.4           | 55.0           | 57.0           | 61.6           | 56.5           | 54.7           | 72.0           | 69.7           | 74.8           | 63.5           | 1.9                                 | 3.1                       |
| Direct investment: intercompany lending | 4138.6         | 6262.6         | 10751.6        | 13520.3        | 14514.9        | 14984.7        | 14885.1        | 14866.4        | 14658.3        | 14557.1        | 14730.0        | 14748.0        | 15112.8        | 15151.5        | 14673.8        | 14631.6        | 14540.8        | 14490.9        | -257.2                              | -1.7                      |
| Loans                                   | 3541.1         | 5637.1         | 9866.3         | 12658.8        | 13706.4        | 13820.9        | 13762.1        | 13763.9        | 13601.9        | 13500.7        | 13673.6        | 13691.6        | 14056.4        | 14095.1        | 13617.4        | 13575.2        | 13484.4        | 13494.5        | -257.2                              | -1.9                      |
| Trade credits                           | 596.5          | 611.0          | 864.7          | 860.0          | 808.5          | 1142.2         | 1121.5         | 1100.9         | 1054.8         | 1054.8         | 1054.8         | 1054.8         | 1054.8         | 1054.8         | 1054.8         | 1054.8         | 1054.8         | 1054.8         | 0.0                                 | 0.0                       |
| Other Debt/Liabilities                  | 1.0            | 14.5           | 20.5           | 1.5            | 0.0            | 1.5            | 1.5            | 1.5            | 1.5            | 1.5            | 1.5            | 1.5            | 1.5            | 1.5            | 1.5            | 1.5            | 1.5            | 1.5            | 0.0                                 | -                         |
| <b>Gross External Debt</b>              | <b>15506.9</b> | <b>20690.9</b> | <b>29016.8</b> | <b>37157.2</b> | <b>37724.5</b> | <b>37305.4</b> | <b>36882.4</b> | <b>36491.9</b> | <b>36506.2</b> | <b>36089.6</b> | <b>36354.0</b> | <b>36679.5</b> | <b>36800.9</b> | <b>36775.1</b> | <b>36280.1</b> | <b>35982.8</b> | <b>36128.7</b> | <b>36207.2</b> | <b>-472.2</b>                       | <b>-1.3</b>               |

<sup>1</sup> Preliminary data. The Euro equivalent is calculated using the monthly e.o.p. exchange rates of the respective foreign currencies.

<sup>2</sup> Brady bonds, Eurobonds, Global bonds and government securities (denominated in BGN and in foreign currency) as well as banks' and corporate sector securities, purchased by non-residents, are included.

The calculations of the item *Bond and Notes* follow the residence concept: the bonds, issued by residents in the international markets and held by residents are subtracted from the external debt.

<sup>3</sup> The item includes government and government guaranteed credits and loans of enterprises from the public and private sector. Intercompany loans are not included.

<sup>4</sup> Data source for the government and government-guaranteed debt: The Register of Government and Government-guaranteed Debt of the Ministry of Finance - preliminary data for June 2011 as of July 26, 2011. Data source for nonguaranteed debt: BNB - preliminary data for June 2011 as of July 26, 2011. Data comprise only those credits that are declared before the BNB and for which the BNB has received information.

<sup>5</sup> Data source: banks (incl. private and state banks). Deposits related to contingent liabilities are excluded.



Table 5  
STRUCTURE OF THE SHORT- AND LONG-TERM DEBT<sup>1</sup>  
(by Instruments)

|   | (EUR million)  |                |                |                |                |                |                |                |                |                |                |                |                |                |                |                |                |                |                                     |                           |
|---|----------------|----------------|----------------|----------------|----------------|----------------|----------------|----------------|----------------|----------------|----------------|----------------|----------------|----------------|----------------|----------------|----------------|----------------|-------------------------------------|---------------------------|
|   | XII. 2005      | XII. 2006      | XII. 2007      | XII. 2008      | XII. 2009      | VI. 2010       | VII. 2010      | VIII. 2010     | IX. 2010       | X. 2010        | XI. 2010       | XII. 2010      | I. 2011        | II. 2011       | III. 2011      | IV. 2011       | V. 2011        | VI. 2011       | VI. 2011 - XII. 2010<br>EUR million | VI. 2011 - XII. 2010<br>% |
| <b>Long-Term External Debt, incl.:</b>  | <b>11573.1</b> | <b>14533.7</b> | <b>19632.8</b> | <b>24018.3</b> | <b>25393.9</b> | <b>25581.2</b> | <b>25085.9</b> | <b>25006.7</b> | <b>24790.0</b> | <b>24733.6</b> | <b>24972.4</b> | <b>25174.5</b> | <b>25794.5</b> | <b>25793.4</b> | <b>25420.1</b> | <b>25356.5</b> | <b>25461.3</b> | <b>25349.1</b> | <b>174.6</b>                        | <b>0.7</b>                |
| Direct investment: intercompany lending | 4138.6         | 6262.6         | 10751.6        | 13520.3        | 14514.9        | 14964.7        | 14885.1        | 14866.4        | 14698.3        | 14557.1        | 14730.0        | 14748.0        | 15112.8        | 15151.5        | 14673.8        | 14631.6        | 14540.8        | 14490.9        | -257.2                              | -1.7                      |
| Others                                  | 7434.5         | 8271.1         | 8881.2         | 10498.0        | 10879.0        | 10616.5        | 10210.8        | 10140.3        | 10131.6        | 10176.5        | 10242.4        | 10426.5        | 10681.7        | 10641.9        | 10746.3        | 10724.9        | 10920.5        | 10656.3        | 437.8                               | 4.1                       |
| Securities                              | 1870.8         | 2057.8         | 1688.4         | 1301.2         | 1283.1         | 1249.3         | 1220.5         | 1233.0         | 1198.7         | 1199.9         | 1253.5         | 1242.4         | 1115.8         | 1106.6         | 1106.6         | 1102.8         | 1115.6         | 1076.5         | -165.8                              | -13.3                     |
| Loans                                   | 5563.7         | 6213.2         | 7192.8         | 9196.8         | 9596.0         | 9367.1         | 8990.3         | 8907.3         | 8932.9         | 8976.6         | 8988.9         | 9184.1         | 9557.1         | 9526.0         | 9639.7         | 9622.1         | 9604.8         | 9781.8         | 597.6                               | 6.5                       |
| <b>Short-Term External Debt</b>         | <b>3933.8</b>  | <b>6157.2</b>  | <b>9384.0</b>  | <b>13138.9</b> | <b>12330.6</b> | <b>11724.2</b> | <b>11786.5</b> | <b>11485.3</b> | <b>11716.2</b> | <b>11356.0</b> | <b>11381.6</b> | <b>11505.0</b> | <b>11006.4</b> | <b>10981.7</b> | <b>10860.0</b> | <b>10626.3</b> | <b>10667.5</b> | <b>10555.1</b> | <b>-646.9</b>                       | <b>-5.6</b>               |
| Securities                              | 0.0            | 179.0          | 0.0            | 0.0            | 0.0            | 0.0            | 0.0            | 0.0            | 0.0            | 0.0            | 0.0            | 0.0            | 0.0            | 0.0            | 0.0            | 0.0            | 0.0            | 0.0            | 0.0                                 | -                         |
| Loans                                   | 1364.1         | 2525.3         | 3754.6         | 5302.5         | 5299.5         | 5339.2         | 5382.4         | 5454.1         | 5123.5         | 5138.7         | 5162.2         | 5327.0         | 5069.2         | 5099.3         | 5171.3         | 5076.9         | 5149.9         | 5161.6         | -165.4                              | -3.1                      |
| Trade credits                           | 1069.8         | 1437.0         | 1586.0         | 1755.6         | 1614.6         | 1501.8         | 1484.8         | 1468.0         | 1363.9         | 1363.9         | 1363.9         | 1363.9         | 1363.9         | 1363.9         | 1363.9         | 1363.9         | 1363.9         | 1363.9         | 0.0                                 | 0.0                       |
| Deposits                                | 1396.6         | 1900.1         | 3919.9         | 5974.6         | 5384.8         | 4833.5         | 4860.0         | 4514.3         | 5169.5         | 4808.3         | 4808.5         | 4762.5         | 4526.7         | 4473.9         | 4262.8         | 4125.9         | 4088.8         | 4279.1         | -483.4                              | -10.2                     |
| Other debt liabilities                  | 103.2          | 115.9          | 123.5          | 106.2          | 31.6           | 49.7           | 59.2           | 48.9           | 69.4           | 55.0           | 57.0           | 61.6           | 56.5           | 54.7           | 72.0           | 69.7           | 74.8           | 63.5           | 1.9                                 | 3.1                       |
| <b>GROSS EXTERNAL DEBT</b>              | <b>15506.9</b> | <b>20690.9</b> | <b>29016.8</b> | <b>37157.2</b> | <b>37724.5</b> | <b>37305.4</b> | <b>36882.4</b> | <b>36491.9</b> | <b>36506.2</b> | <b>36089.6</b> | <b>36354.0</b> | <b>36679.5</b> | <b>36800.9</b> | <b>36775.1</b> | <b>36280.1</b> | <b>35982.8</b> | <b>36126.7</b> | <b>36207.2</b> | <b>-472.2</b>                       | <b>-1.3</b>               |

<sup>1</sup> Preliminary data. The Euro equivalent is calculated using the monthly e.o.p. exchange rates of the respective foreign currencies. The division of the debt into short- and long-term is based on the original maturity.

Table 6

**GOVERNMENT DEBT SECURITIES, ISSUED ON THE DOMESTIC MARKET AND OWNED BY NON-RESIDENTS<sup>1</sup>**

|              |             |            |            |             |             |             |             |             |             |             |             |             | (EUR million) |             |             |             |             |                                     |            |
|--------------|-------------|------------|------------|-------------|-------------|-------------|-------------|-------------|-------------|-------------|-------------|-------------|---------------|-------------|-------------|-------------|-------------|-------------------------------------|------------|
|              | XII. 2005   | XII. 2006  | XII. 2007  | XII. 2008   | XII. 2009   | VII. 2010   | VIII. 2010  | IX. 2010    | X. 2010     | XI. 2010    | XII. 2010   | I. 2011     | II. 2011      | III. 2011   | IV. 2011    | V. 2011     | VI. 2011    | VI. 2011 - XII. 2010<br>EUR million | %          |
| ZUNK, incl.: | 0.8         | 0.8        | 0.7        | 0.7         | 2.0         | 3.2         | 3.3         | 0.5         | 0.5         | 0.5         | 0.5         | 0.5         | 0.5           | 0.5         | 0.5         | 0.5         | 0.0         | -0.5                                | -96.8      |
| - in EUR     | 0.8         | 0.7        | 0.7        | 0.6         | 0.6         | 0.5         | 0.5         | 0.5         | 0.5         | 0.5         | 0.5         | 0.4         | 0.4           | 0.4         | 0.4         | 0.4         | 0.0         | -0.5                                | -98.7      |
| - in USD     | 0.1         | 0.0        | 0.0        | 0.0         | 1.4         | 2.8         | 2.8         | 0.0         | 0.0         | 0.0         | 0.0         | 0.0         | 0.0           | 0.0         | 0.0         | 0.0         | 0.0         | 0.0                                 | -18.3      |
| Regulation 5 | 9.3         | 8.8        | 8.8        | 14.0        | 19.5        | 17.8        | 17.8        | 12.9        | 12.9        | 14.1        | 14.1        | 14.7        | 14.4          | 14.4        | 14.4        | 14.4        | 15.0        | 0.8                                 | 5.7        |
| <b>TOTAL</b> | <b>10.1</b> | <b>9.5</b> | <b>9.5</b> | <b>14.7</b> | <b>21.5</b> | <b>21.0</b> | <b>21.1</b> | <b>13.4</b> | <b>13.4</b> | <b>14.7</b> | <b>14.7</b> | <b>15.2</b> | <b>14.9</b>   | <b>14.9</b> | <b>14.9</b> | <b>14.9</b> | <b>15.0</b> | <b>0.3</b>                          | <b>2.1</b> |

<sup>1</sup> Data based on quarterly reports of the primary dealers of government debt securities.

Table 7

**GOVERNMENT BONDS, ISSUED ON THE INTERNATIONAL MARKETS AND OWNED BY RESIDENTS<sup>1</sup>**

|                                      |           |           |           |           |           |           |            |          |         |          |           |         | (EUR million) |           |          |         |          |                                     |      |
|--------------------------------------|-----------|-----------|-----------|-----------|-----------|-----------|------------|----------|---------|----------|-----------|---------|---------------|-----------|----------|---------|----------|-------------------------------------|------|
|                                      | XII. 2005 | XII. 2006 | XII. 2007 | XII. 2008 | XII. 2009 | VII. 2010 | VIII. 2010 | IX. 2010 | X. 2010 | XI. 2010 | XII. 2010 | I. 2011 | II. 2011      | III. 2011 | IV. 2011 | V. 2011 | VI. 2011 | VI. 2011 - XII. 2010<br>EUR million | %    |
| Bonds                                | 1912.5    | 1800.2    | 1700.3    | 1736.7    | 1576.1    | 1703.8    | 1652.3     | 1614.4   | 1602.4  | 1654.3   | 1636.5    | 1611.9  | 1603.7        | 1583.1    | 1549.5   | 1573.7  | 1570.1   | -66.4                               | -4.1 |
| Global Bonds                         | 835.5     | 835.5     | 835.5     | 835.5     | 818.5     | 818.5     | 818.5      | 818.5    | 818.5   | 818.5    | 818.5     | 818.5   | 818.5         | 818.5     | 818.5    | 818.5   | 818.5    | 0.0                                 | 0.0  |
| - 2013, incl.:<br>owned by residents | 148.2     | 188.0     | 289.6     | 425.8     | 372.9     | 425.4     | 422.0      | 423.4    | 428.6   | 428.6    | 418.2     | 522.4   | 520.4         | 515.5     | 483.7    | 483.0   | 481.5    | 63.2                                | 15.1 |
| - 2015, incl.:<br>owned by residents | 1077.0    | 964.7     | 864.8     | 901.2     | 757.7     | 885.3     | 833.9      | 796.0    | 784.0   | 835.8    | 818.0     | 793.4   | 785.3         | 764.7     | 731.1    | 755.2   | 751.6    | -66.4                               | -8.1 |
|                                      | 175.8     | 143.6     | 172.9     | 358.8     | 206.0     | 282.6     | 267.1      | 240.8    | 221.2   | 243.3    | 238.4     | 230.4   | 232.2         | 220.0     | 221.1    | 233.5   | 231.6    | -6.8                                | -2.9 |

<sup>1</sup> Includes the emissions of the government of global bonds in the international financial markets, not repaid until end-June 2011  
In accordance with the resident concept global bonds, owned by residents, are included in the general tables with a minus sign.

Table 8

**GROSS EXTERNAL DEBT<sup>1</sup>**  
**(by Creditor's Sector)**

| (EUR million)   | VI. 2011                          |               |              |              |              |               |                    |                      |                |               |                                     |                |
|---|-----------------------------------|---------------|--------------|--------------|--------------|---------------|--------------------|----------------------|----------------|---------------|-------------------------------------|----------------|
|   | Multilateral Organizations        |               |              |              |              |               | General Government | Monetary Authorities | Banks          | Other Sectors | Traded Debt Securities <sup>6</sup> | Total          |
|   | IMF                               | World Bank    | EBRD         | EIB          | Other        | Total         |                    |                      |                |               |                                     |                |
| <b>I. General Government<sup>2</sup></b>                      | <b>0.0</b>                        | <b>927.2</b>  | <b>36.5</b>  | <b>610.2</b> | <b>0.0</b>   | <b>1573.9</b> | <b>94.4</b>        | <b>0.0</b>           | <b>75.6</b>    | <b>109.6</b>  | <b>888.8</b>                        | <b>2742.3</b>  |
| Short-term  | 0.0                               | 0.0           | 0.0          | 0.0          | 0.0          | 0.0           | 0.0                | 0.0                  | 0.0            | 0.0           | 0.0                                 | 0.0            |
| Long-term   | 0.0                               | 927.2         | 36.5         | 610.2        | 0.0          | 1573.9        | 94.4               | 0.0                  | 75.6           | 109.6         | 888.8                               | 2742.3         |
| <b>II. Monetary Authorities</b>                               | <b>0.0</b>                        | <b>0.0</b>    | <b>0.0</b>   | <b>0.0</b>   | <b>0.0</b>   | <b>0.0</b>    | <b>0.0</b>         | <b>0.0</b>           | <b>0.0</b>     | <b>0.0</b>    | <b>0.0</b>                          | <b>0.0</b>     |
| <b>III. Banks<sup>3</sup></b>                                 | <b>0.0</b>                        | <b>0.0</b>    | <b>282.2</b> | <b>204.9</b> | <b>81.4</b>  | <b>568.6</b>  | <b>16.2</b>        | <b>0.0</b>           | <b>4834.4</b>  | <b>1073.9</b> | <b>26.3</b>                         | <b>6519.3</b>  |
| Short-term  | 0.0                               | 0.0           | 80.8         | 62.0         | 15.6         | 158.4         | 16.2               | 0.0                  | 3628.6         | 1037.5        | 0.0                                 | 4840.7         |
| Long-term   | 0.0                               | 0.0           | 201.4        | 142.9        | 65.8         | 410.2         | 0.0                | 0.0                  | 1205.7         | 36.5          | 26.3                                | 1678.6         |
| <b>IV. Other Sectors<sup>4</sup></b>                          | <b>0.0</b>                        | <b>46.3</b>   | <b>607.1</b> | <b>89.8</b>  | <b>276.0</b> | <b>1019.1</b> | <b>4.9</b>         | <b>0.0</b>           | <b>6378.0</b>  | <b>4891.3</b> | <b>161.5</b>                        | <b>12454.7</b> |
| Short-term  | 0.0                               | 0.0           | 77.7         | 0.0          | 28.1         | 105.8         | 0.0                | 0.0                  | 2881.7         | 3029.9        | 0.0                                 | 6017.4         |
| Long-term   | 0.0                               | 46.3          | 529.4        | 89.8         | 247.9        | 913.3         | 4.8                | 0.0                  | 3496.2         | 1861.5        | 161.5                               | 6437.3         |
| <b>Total by creditor sectors</b>                              | <b>0.0</b>                        | <b>973.5</b>  | <b>925.8</b> | <b>904.9</b> | <b>357.4</b> | <b>3161.6</b> | <b>115.5</b>       | <b>0.0</b>           | <b>11287.9</b> | <b>6074.9</b> | <b>1076.5</b>                       | <b>21716.4</b> |
| <b>V. Direct investment: Intercompany Lending<sup>5</sup></b> |                                   |               |              |              |              |               |                    |                      |                |               |                                     | <b>14490.9</b> |
| <b>Gross External Debt (I+II+III+IV+V)</b>                    |                                   |               |              |              |              |               |                    |                      |                |               |                                     | <b>36207.2</b> |
| (EUR million)   | XII. 2010                         |               |              |              |              |               |                    |                      |                |               |                                     |                |
|   | Multilateral Organizations        |               |              |              |              |               | General Government | Monetary Authorities | Banks          | Other Sectors | Traded Debt Securities <sup>6</sup> | Total          |
|   | IMF                               | World Bank    | EBRD         | EIB          | Other        | Total         |                    |                      |                |               |                                     |                |
| <b>I. General Government<sup>2</sup></b>                      | <b>0.0</b>                        | <b>950.5</b>  | <b>38.0</b>  | <b>576.3</b> | <b>0.0</b>   | <b>1564.8</b> | <b>100.7</b>       | <b>0.0</b>           | <b>81.8</b>    | <b>122.1</b>  | <b>1003.6</b>                       | <b>2873.0</b>  |
| Short-term  | 0.0                               | 0.0           | 0.0          | 0.0          | 0.0          | 0.0           | 0.0                | 0.0                  | 0.0            | 0.0           | 0.0                                 | 0.0            |
| Long-term   | 0.0                               | 950.5         | 38.0         | 576.3        | 0.0          | 1564.8        | 100.7              | 0.0                  | 81.8           | 122.1         | 1003.6                              | 2873.0         |
| <b>II. Monetary Authorities</b>                               | <b>0.0</b>                        | <b>0.0</b>    | <b>0.0</b>   | <b>0.0</b>   | <b>0.0</b>   | <b>0.0</b>    | <b>0.0</b>         | <b>0.0</b>           | <b>0.0</b>     | <b>0.0</b>    | <b>0.0</b>                          | <b>0.0</b>     |
| Short-term  | 0.0                               | 0.0           | 0.0          | 0.0          | 0.0          | 0.0           | 0.0                | 0.0                  | 0.0            | 0.0           | 0.0                                 | 0.0            |
| Long-term   | 0.0                               | 0.0           | 0.0          | 0.0          | 0.0          | 0.0           | 0.0                | 0.0                  | 0.0            | 0.0           | 0.0                                 | 0.0            |
| <b>III. Banks<sup>3</sup></b>                                 | <b>0.0</b>                        | <b>0.0</b>    | <b>247.9</b> | <b>210.3</b> | <b>84.9</b>  | <b>543.1</b>  | <b>14.7</b>        | <b>0.0</b>           | <b>5142.8</b>  | <b>1122.5</b> | <b>38.8</b>                         | <b>6862.1</b>  |
| Short-term  | 0.0                               | 0.0           | 77.7         | 72.0         | 16.2         | 165.9         | 14.7               | 0.0                  | 4223.2         | 951.2         | 0.0                                 | 5355.0         |
| Long-term   | 0.0                               | 0.0           | 170.2        | 138.3        | 68.7         | 377.3         | 0.0                | 0.0                  | 919.6          | 171.3         | 38.8                                | 1507.1         |
| <b>IV. Other Sectors<sup>4</sup></b>                          | <b>0.0</b>                        | <b>51.7</b>   | <b>528.5</b> | <b>91.6</b>  | <b>272.2</b> | <b>944.1</b>  | <b>4.9</b>         | <b>0.0</b>           | <b>6246.3</b>  | <b>4801.1</b> | <b>199.9</b>                        | <b>12196.4</b> |
| Short-term  | 0.0                               | 0.0           | 71.5         | 0.0          | 49.2         | 120.7         | 0.0                | 0.0                  | 3003.9         | 3025.3        | 0.0                                 | 6150.0         |
| Long-term   | 0.0                               | 51.7          | 457.0        | 91.6         | 223.1        | 823.4         | 4.9                | 0.0                  | 3242.4         | 1775.8        | 199.9                               | 6046.4         |
| <b>Total by creditor sectors</b>                              | <b>0.0</b>                        | <b>1002.2</b> | <b>814.4</b> | <b>878.3</b> | <b>357.1</b> | <b>3052.0</b> | <b>120.4</b>       | <b>0.0</b>           | <b>11470.9</b> | <b>6045.7</b> | <b>1242.4</b>                       | <b>21931.5</b> |
| <b>V. Direct investment: Intercompany Lending<sup>5</sup></b> |                                   |               |              |              |              |               |                    |                      |                |               |                                     | <b>14748.0</b> |
| Short-term  | 0.0                               | 0.0           | 0.0          | 0.0          | 0.0          | 0.0           | 0.0                | 0.0                  | 0.0            | 0.0           | 0.0                                 | 0.0            |
| Long-term   | 0.0                               | 0.0           | 0.0          | 0.0          | 0.0          | 0.0           | 0.0                | 0.0                  | 0.0            | 0.0           | 0.0                                 | 14748.0        |
| <b>Gross External Debt (I+II+III+IV+V)</b>                    |                                   |               |              |              |              |               |                    |                      |                |               |                                     | <b>36679.5</b> |
| (EUR million)   | DIFFERENCE (VI. 2011 / XII. 2010) |               |              |              |              |               |                    |                      |                |               |                                     |                |
|   | Multilateral Organizations        |               |              |              |              |               | General Government | Monetary Authorities | Banks          | Other Sectors | Traded Debt Securities <sup>6</sup> | Total          |
|   | IMF                               | World Bank    | EBRD         | EIB          | Other        | Total         |                    |                      |                |               |                                     |                |
| <b>I. General Government<sup>2</sup></b>                      | <b>0.0</b>                        | <b>-23.3</b>  | <b>-1.5</b>  | <b>33.8</b>  | <b>0.0</b>   | <b>9.1</b>    | <b>-6.3</b>        | <b>0.0</b>           | <b>-6.2</b>    | <b>-12.5</b>  | <b>-114.8</b>                       | <b>-130.7</b>  |
| Short-term  | 0.0                               | 0.0           | 0.0          | 0.0          | 0.0          | 0.0           | 0.0                | 0.0                  | 0.0            | 0.0           | 0.0                                 | 0.0            |
| Long-term   | 0.0                               | -23.3         | -1.5         | 33.8         | 0.0          | 9.1           | -6.3               | 0.0                  | -6.2           | -12.5         | -114.8                              | -130.7         |
| <b>II. Monetary Authorities</b>                               | <b>0.0</b>                        | <b>0.0</b>    | <b>0.0</b>   | <b>0.0</b>   | <b>0.0</b>   | <b>0.0</b>    | <b>0.0</b>         | <b>0.0</b>           | <b>0.0</b>     | <b>0.0</b>    | <b>0.0</b>                          | <b>0.0</b>     |
| Short-term  | 0.0                               | 0.0           | 0.0          | 0.0          | 0.0          | 0.0           | 0.0                | 0.0                  | 0.0            | 0.0           | 0.0                                 | 0.0            |
| Long-term   | 0.0                               | 0.0           | 0.0          | 0.0          | 0.0          | 0.0           | 0.0                | 0.0                  | 0.0            | 0.0           | 0.0                                 | 0.0            |
| <b>III. Banks<sup>3</sup></b>                                 | <b>0.0</b>                        | <b>0.0</b>    | <b>34.3</b>  | <b>-5.4</b>  | <b>-3.5</b>  | <b>25.4</b>   | <b>1.5</b>         | <b>0.0</b>           | <b>-308.5</b>  | <b>-48.6</b>  | <b>-12.6</b>                        | <b>-342.7</b>  |
| Short-term  | 0.0                               | 0.0           | 3.1          | -10.0        | -0.6         | -7.5          | 1.5                | 0.0                  | -594.5         | 86.3          | 0.0                                 | -514.3         |
| Long-term   | 0.0                               | 0.0           | 31.2         | 4.6          | -2.9         | 32.9          | 0.0                | 0.0                  | 286.1          | -134.8        | -12.6                               | 171.6          |
| <b>IV. Other Sectors<sup>4</sup></b>                          | <b>0.0</b>                        | <b>-5.4</b>   | <b>78.6</b>  | <b>-1.9</b>  | <b>3.7</b>   | <b>75.0</b>   | <b>-0.1</b>        | <b>0.0</b>           | <b>131.6</b>   | <b>90.2</b>   | <b>-38.4</b>                        | <b>258.4</b>   |
| Short-term  | 0.0                               | 0.0           | 6.2          | 0.0          | -21.1        | -14.9         | 0.0                | 0.0                  | -122.2         | 4.5           | 0.0                                 | -132.6         |
| Long-term   | 0.0                               | -5.4          | 72.4         | -1.9         | 24.8         | 89.9          | -0.1               | 0.0                  | 253.8          | 85.7          | -38.4                               | 391.0          |
| <b>Total by creditor sectors</b>                              | <b>0.0</b>                        | <b>-28.7</b>  | <b>111.5</b> | <b>26.5</b>  | <b>0.2</b>   | <b>109.5</b>  | <b>-4.9</b>        | <b>0.0</b>           | <b>-183.0</b>  | <b>29.2</b>   | <b>-165.8</b>                       | <b>-215.1</b>  |
| <b>V. Direct investment: Intercompany Lending<sup>5</sup></b> | <b>0.0</b>                        | <b>0.0</b>    | <b>0.0</b>   | <b>0.0</b>   | <b>0.0</b>   | <b>0.0</b>    | <b>0.0</b>         | <b>0.0</b>           | <b>0.0</b>     | <b>0.0</b>    | <b>0.0</b>                          | <b>-257.2</b>  |
| Short-term  | 0.0                               | 0.0           | 0.0          | 0.0          | 0.0          | 0.0           | 0.0                | 0.0                  | 0.0            | 0.0           | 0.0                                 | 0.0            |
| Long-term   | 0.0                               | 0.0           | 0.0          | 0.0          | 0.0          | 0.0           | 0.0                | 0.0                  | 0.0            | 0.0           | 0.0                                 | -257.2         |
| <b>Gross External Debt (I+II+III+IV+V)</b>                    | <b>0.0</b>                        | <b>0.0</b>    | <b>0.0</b>   | <b>0.0</b>   | <b>0.0</b>   | <b>0.0</b>    | <b>0.0</b>         | <b>0.0</b>           | <b>0.0</b>     | <b>0.0</b>    | <b>0.0</b>                          | <b>-472.2</b>  |

<sup>1</sup> Preliminary data. The Euro equivalent is calculated using the monthly e.o.p. exchange rates of the respective foreign currencies. Quarterly data are published.

<sup>2</sup> Data source: The Register of Government and Government-guaranteed Debt of the Ministry of Finance. Preliminary data for June 2011 as of July 26, 2011. Debt liabilities of the public companies and the government guaranteed debt are excluded.

<sup>3</sup> Data source: banks (incl. private and state banks). Deposits related to contingent liabilities are excluded.

<sup>4</sup> Data source: Local individuals and legal entities (incl. state owned companies and government guaranteed loans from the Register of Government and Government-guaranteed Debt of the MoF). Intercompany loans are excluded. Data comprise only those credits that are declared before the BNB and for which the BNB has received information.

<sup>5</sup> Due to the fact that direct investment liabilities do not fall naturally into this presentation totals are shown for Direct investment: Intercompany lending. *External Debt Statistics: Guide for Compilers and Users*, Chapter 7, para 7.43.

<sup>6</sup> Brady bonds, Eurobonds, Global bonds and government securities (denominated in BGN and in foreign currency), purchased by non-residents as well as debt securities issued by banks and local companies and held by non-residents are included.

Table 9

**CURRENCY STRUCTURE OF THE GROSS EXTERNAL DEBT<sup>1</sup>**  
(by Institutional Sectors)

( % )

| <b>Gross External Debt</b>            |              |              |              |              |              |              |              |              |              |              |
|---------------------------------------|--------------|--------------|--------------|--------------|--------------|--------------|--------------|--------------|--------------|--------------|
| Currency                              | 2006         | 2007         | 2008         | 2009         | 2010         |              |              |              | 2011         |              |
|                                       | XII          | XII          | XII          | XII          | III          | VI           | IX           | XII          | III          | VI           |
| Euro                                  | 79.6         | 87.0         | 85.9         | 88.8         | 88.5         | 87.9         | 88.7         | 87.7         | 88.3         | 87.7         |
| US Dollar                             | 11.9         | 8.0          | 6.5          | 6.3          | 6.7          | 7.2          | 6.4          | 6.5          | 6.3          | 6.2          |
| SDR                                   | 1.3          | 0.0          | 0.0          | 0.0          | 0.0          | 0.0          | 0.0          | 0.0          | 0.0          | 0.0          |
| Other                                 | 7.2          | 5.0          | 7.6          | 4.9          | 4.9          | 4.9          | 4.9          | 5.8          | 5.4          | 6.0          |
| <b>Total</b>                          | <b>100.0</b> | <b>100.0</b> | <b>100.0</b> | <b>100.0</b> | <b>100.0</b> | <b>100.0</b> | <b>100.0</b> | <b>100.0</b> | <b>100.0</b> | <b>100.0</b> |
| <b>General Government<sup>2</sup></b> |              |              |              |              |              |              |              |              |              |              |
| Currency                              | 2006         | 2007         | 2008         | 2009         | 2010         |              |              |              | 2011         |              |
|                                       | XII          | XII          | XII          | XII          | III          | VI           | IX           | XII          | III          | VI           |
| Euro                                  | 63.7         | 70.4         | 70.2         | 73.8         | 72.9         | 71.6         | 73.2         | 73.2         | 74.2         | 75.0         |
| US Dollar                             | 24.8         | 24.6         | 23.6         | 21.0         | 21.8         | 22.6         | 21.3         | 21.4         | 20.7         | 20.0         |
| SDR                                   | 7.0          | 0.0          | 0.0          | 0.0          | 0.0          | 0.0          | 0.0          | 0.0          | 0.0          | 0.0          |
| Japanese Yen                          | 4.0          | 4.5          | 5.4          | 4.4          | 4.6          | 5.1          | 5.1          | 5.0          | 4.7          | 4.7          |
| Other                                 | 0.5          | 0.5          | 0.7          | 0.7          | 0.7          | 0.7          | 0.4          | 0.4          | 0.4          | 0.4          |
| <b>Total</b>                          | <b>100.0</b> | <b>100.0</b> | <b>100.0</b> | <b>100.0</b> | <b>100.0</b> | <b>100.0</b> | <b>100.0</b> | <b>100.0</b> | <b>100.0</b> | <b>100.0</b> |
| <b>Banks</b>                          |              |              |              |              |              |              |              |              |              |              |
| Currency                              | 2006         | 2007         | 2008         | 2009         | 2010         |              |              |              | 2011         |              |
|                                       | XII          | XII          | XII          | XII          | III          | VI           | IX           | XII          | III          | VI           |
| Euro                                  | 80.8         | 91.5         | 82.8         | 90.5         | 90.9         | 90.8         | 89.7         | 84.8         | 85.3         | 82.0         |
| US Dollar                             | 4.3          | 2.2          | 2.9          | 2.3          | 2.2          | 2.7          | 3.0          | 2.7          | 2.5          | 2.3          |
| Bulgarian Lev                         | 12.1         | 6.0          | 13.7         | 6.8          | 6.3          | 5.8          | 6.6          | 11.8         | 11.5         | 14.9         |
| Swiss Franc                           | 2.3          | 0.0          | 0.2          | 0.2          | 0.2          | 0.2          | 0.2          | 0.2          | 0.2          | 0.3          |
| Other                                 | 0.5          | 0.2          | 0.4          | 0.4          | 0.4          | 0.5          | 0.5          | 0.5          | 0.5          | 0.5          |
| <b>Total</b>                          | <b>100.0</b> | <b>100.0</b> | <b>100.0</b> | <b>100.0</b> | <b>100.0</b> | <b>100.0</b> | <b>100.0</b> | <b>100.0</b> | <b>100.0</b> | <b>100.0</b> |
| <b>Other Sectors</b>                  |              |              |              |              |              |              |              |              |              |              |
| Currency                              | 2006         | 2007         | 2008         | 2009         | 2010         |              |              |              | 2011         |              |
|                                       | XII          | XII          | XII          | XII          | III          | VI           | IX           | XII          | III          | VI           |
| Euro                                  | 78.4         | 85.2         | 83.3         | 85.8         | 85.6         | 85.3         | 86.7         | 86.8         | 87.5         | 87.6         |
| US Dollar                             | 12.0         | 7.4          | 7.3          | 7.3          | 7.4          | 7.5          | 6.4          | 6.4          | 6.2          | 6.3          |
| Other                                 | 9.5          | 7.4          | 9.4          | 6.9          | 7.0          | 7.2          | 6.9          | 6.8          | 6.3          | 6.2          |
| <b>Total</b>                          | <b>100.0</b> | <b>100.0</b> | <b>100.0</b> | <b>100.0</b> | <b>100.0</b> | <b>100.0</b> | <b>100.0</b> | <b>100.0</b> | <b>100.0</b> | <b>100.0</b> |
| <b>Direct Investment</b>              |              |              |              |              |              |              |              |              |              |              |
| Currency                              | 2006         | 2007         | 2008         | 2009         | 2010         |              |              |              | 2011         |              |
|                                       | XII          | XII          | XII          | XII          | III          | VI           | IX           | XII          | III          | VI           |
| Euro                                  | 89.8         | 90.9         | 93.2         | 93.3         | 92.5         | 91.8         | 92.7         | 92.6         | 92.9         | 92.9         |
| US Dollar                             | 8.5          | 6.9          | 4.9          | 4.8          | 5.5          | 6.1          | 5.2          | 5.4          | 5.5          | 5.3          |
| Other                                 | 1.7          | 2.3          | 1.9          | 1.9          | 2.0          | 2.1          | 2.1          | 2.0          | 1.7          | 1.7          |
| <b>Total</b>                          | <b>100.0</b> | <b>100.0</b> | <b>100.0</b> | <b>100.0</b> | <b>100.0</b> | <b>100.0</b> | <b>100.0</b> | <b>100.0</b> | <b>100.0</b> | <b>100.0</b> |

<sup>1</sup> Preliminary data. The currency structure data are calculated by quarters.

<sup>2</sup> Data source: The Register of Government and Government-guaranteed Debt of the Ministry of Finance. Preliminary data for June 2011 as of July 26, 2011.

Table 10

**NET FLOW<sup>1</sup>**  
**(by Institutional Sectors)**

|   | (EUR million) |              |               |               |               |               |               |              |               |                |               |  |              |
|---|---------------|--------------|---------------|---------------|---------------|---------------|---------------|--------------|---------------|----------------|---------------|--|--------------|
|   | 2002          | 2003         | 2004          | 2005          | 2006          | 2007          | 2008          | 2009         | 2010          | I.-VI. 2010    | I.-VI. 2011   | I.-VI. 2011 / I.-VI. 2010<br>EUR million | %            |
| <b>I. General Government</b>                      | -368.7        | -3.3         | -413.6        | -1792.8       | -607.5        | -520.1        | -656.0        | 326.1        | -47.6         | -96.3          | -101.6        | -5.3                                     | 5.5          |
| <b>II. Monetary Authorities</b>                   | -50.9         | -19.3        | 0.0           | 0.0           | 0.0           | 0.0           | 0.0           | 0.0          | 0.0           | 0.0            | 0.0           | 0.0                                      | -            |
| <b>II. Banks</b>                                  | 152.1         | 137.0        | 847.8         | 428.5         | 878.6         | 2185.1        | 3004.2        | -740.1       | -1273.5       | -1143.1        | -341.6        | 801.5                                    | -70.1        |
| <b>IV. Other Sectors</b>                          | 251.9         | 239.4        | 932.2         | 817.8         | 2530.2        | 1785.6        | 2102.6        | 122.3        | 249.1         | 159.1          | 79.2          | -79.8                                    | -50.2        |
| <b>V. Direct investment: intercompany lending</b> | 108.7         | 323.2        | 607.9         | 1686.6        | 1958.8        | 3764.7        | 2296.2        | 999.1        | 147.7         | 5.7            | -83.9         | -89.6                                    | -1583.3      |
| <b>TOTAL NET FLOW</b>                             | <b>93.0</b>   | <b>677.0</b> | <b>1974.3</b> | <b>1140.1</b> | <b>4760.1</b> | <b>7215.3</b> | <b>6747.0</b> | <b>707.4</b> | <b>-924.3</b> | <b>-1074.6</b> | <b>-447.8</b> | <b>626.8</b>                             | <b>-58.3</b> |

<sup>1</sup> The difference between the total amount of disbursements and the total amount of principal payments.

Table 11

**DISBURSEMENTS**  
(by Institutional Sector<sup>1</sup>)

(EUR million)

|   | VI. 2010      | I.- VI. 2010  | VI. 2011     | I.- VI. 2011  | Change <sup>2</sup> |
|---|---------------|---------------|--------------|---------------|---------------------|
| <b>I. General Government</b> <sup>3</sup>         | <b>36.7</b>   | <b>112.4</b>  | <b>3.5</b>   | <b>102.8</b>  | <b>-9.6</b>         |
| <b>Short-term</b>                                 | <b>0.0</b>    | <b>0.0</b>    | <b>0.0</b>   | <b>0.0</b>    | <b>0.0</b>          |
| <b>Long-term</b>                                  | <b>36.7</b>   | <b>112.4</b>  | <b>3.5</b>   | <b>102.8</b>  | <b>-9.6</b>         |
| Bonds and Notes <sup>4</sup>                      | 1.1           | 36.1          | 3.0          | 61.4          | 25.3                |
| Loans   | 35.6          | 76.3          | 0.5          | 41.4          | -34.9               |
| <b>II. Monetary Authorities</b>                   | <b>0.0</b>    | <b>0.0</b>    | <b>0.0</b>   | <b>0.0</b>    | <b>0.0</b>          |
| <b>Short-term</b>                                 | <b>0.0</b>    | <b>0.0</b>    | <b>0.0</b>   | <b>0.0</b>    | <b>0.0</b>          |
| <b>Long-term</b>                                  | <b>0.0</b>    | <b>0.0</b>    | <b>0.0</b>   | <b>0.0</b>    | <b>0.0</b>          |
| <b>III. Banks</b> <sup>5</sup>                    | <b>341.2</b>  | <b>843.5</b>  | <b>234.9</b> | <b>680.9</b>  | <b>-162.7</b>       |
| <b>Short-term</b>                                 | <b>328.7</b>  | <b>693.9</b>  | <b>197.8</b> | <b>456.9</b>  | <b>-237.0</b>       |
| Loans   | 81.9          | 127.3         | 7.1          | 234.2         | 106.9               |
| Currency and deposits <sup>6</sup>                | 246.8         | 423.6         | 190.7        | 190.7         | -232.9              |
| Other debt liabilities                            | 0.0           | 143.0         | 0.0          | 32.0          | -111.0              |
| <b>Long-term</b>                                  | <b>12.5</b>   | <b>149.7</b>  | <b>37.2</b>  | <b>224.0</b>  | <b>74.3</b>         |
| Bonds and Notes                                   | 0.0           | 0.0           | 0.0          | 0.0           | 0.0                 |
| Loans   | 12.5          | 149.7         | 37.2         | 224.0         | 74.3                |
| <b>IV. Other Sectors</b> <sup>7</sup>             | <b>124.6</b>  | <b>585.1</b>  | <b>81.3</b>  | <b>649.2</b>  | <b>64.0</b>         |
| <b>Short-term</b>                                 | <b>21.4</b>   | <b>246.9</b>  | <b>19.7</b>  | <b>84.3</b>   | <b>-162.5</b>       |
| Money Market Instruments                          | 0.0           | 0.0           | 0.0          | 0.0           | 0.0                 |
| Loans   | 21.4          | 246.9         | 19.7         | 84.3          | -162.5              |
| Other debt liabilities                            | 0.0           | 0.0           | 0.0          | 0.0           | 0.0                 |
| <b>Long-term</b>                                  | <b>103.2</b>  | <b>338.3</b>  | <b>61.6</b>  | <b>564.9</b>  | <b>226.6</b>        |
| Bonds and Notes                                   | 0.0           | 1.0           | 0.0          | 2.8           | 1.8                 |
| Loans   | 103.2         | 337.3         | 61.6         | 562.0         | 224.8               |
| <b>V. Direct investment: intercompany lending</b> | <b>524.2</b>  | <b>1350.1</b> | <b>131.4</b> | <b>997.5</b>  | <b>-352.5</b>       |
| <b>GROSS EXTERNAL DEBT (I+II+III+IV+V)</b>        | <b>1026.7</b> | <b>2891.1</b> | <b>451.2</b> | <b>2430.4</b> | <b>-460.7</b>       |

**Memo items:**

|  |       |        |       |        |        |
|--|-------|--------|-------|--------|--------|
| Long-term external debt <sup>8</sup>         | 676.6 | 1950.4 | 233.7 | 1889.2 | -61.2  |
| Short-term external debt                     | 350.1 | 940.7  | 217.5 | 541.2  | -399.5 |
| Public and publicly guaranteed external debt | 47.8  | 155.3  | 6.4   | 173.9  | 18.6   |
| Private non-guaranteed external debt         | 979.0 | 2735.8 | 444.8 | 2256.5 | -479.3 |
| Revolving credits <sup>9</sup>               | 513.7 | 2794.6 | 513.5 | 2577.1 | -217.4 |
| Trade Credits <sup>9,10</sup>                | 32.1  | 138.9  | 0.0   | 0.0    | -138.9 |

<sup>1</sup> Actual disbursements. Preliminary data. The Euro equivalent is calculated using the monthly average exchange rates of the respective foreign currencies.

<sup>2</sup> Change for the period January - June 2011 against January - June 2010.

<sup>3</sup> Data source: The Register of Government and Government-guaranteed Debt of the Ministry of Finance. Preliminary data for June 2011 as of July 26, 2011. Disbursements related to debt liabilities of the public companies and the government guaranteed debt are excluded.

<sup>4</sup> In accordance with the residence concept the net decrease of the stock of Brady bonds, Eurobonds and Global bonds held by residents represents net increase of the liabilities to nonresidents and is reflected with a positive sign.

<sup>5</sup> Data source: banks.

<sup>6</sup> Deposits connected with contingent liabilities are not included.

<sup>7</sup> Data comprise disbursements on those credits (excl. revolving and intercompany lending) that are declared before the BNB and for which the BNB has received information as well as disbursements on government guaranteed loans (source: The Register of Government and Government-guaranteed Debt of the Ministry of Finance. Preliminary data for June 2011 as of July 26, 2011).

<sup>8</sup> In accordance with the *EXTERNAL DEBT STATISTICS, Guide for Compilers and Users, IMF 2003 p.3.14 and p. 7.5* disbursements related to Direct investment are included in the long-term debt.

<sup>9</sup> Not included in table Disbursements by Institutional Sector.

<sup>10</sup> The net increase in the stock of the trade credits in the reporting month is reported in the Disbursements tables (tables 11 and 12), while the net decrease - in the *Debt Service tables (tables 13 and 14)*.

Table 12

**DISBURSEMENTS**  
(by Instruments<sup>1</sup>)

(EUR million)

|  | VI. 2010      | I.- VI. 2010  | VI. 2011     | I.- VI. 2011  | Change <sup>2</sup> |
|--|---------------|---------------|--------------|---------------|---------------------|
| Securities <sup>3</sup>                    | 1.1           | 37.1          | 3.0          | 64.3          | 27.2                |
| Money Market Instruments                   | 0.0           | 0.0           | 0.0          | 0.0           | 0.0                 |
| Bonds and Notes <sup>4</sup>               | 1.1           | 37.1          | 3.0          | 64.3          | 27.2                |
| Loans <sup>5,6</sup>                       | 254.7         | 937.4         | 126.1        | 1145.9        | 208.6               |
| Short-Term                                 | 103.3         | 374.1         | 26.8         | 318.5         | -55.6               |
| Long-Term                                  | 151.4         | 563.2         | 99.3         | 827.4         | 264.2               |
| Deposits <sup>7</sup>                      | 246.8         | 423.6         | 190.7        | 190.7         | -232.9              |
| Other Debt Liabilities                     | 0.0           | 143.0         | 0.0          | 32.0          | -111.0              |
| Direct investment: intercompany lending    | 524.2         | 1350.1        | 131.4        | 997.5         | -352.5              |
|  |               |               |              |               | 0.0                 |
| <b>GROSS EXTERNAL DEBT (I+II+III+IV+V)</b> | <b>1026.7</b> | <b>2891.1</b> | <b>451.2</b> | <b>2430.4</b> | <b>-460.7</b>       |

**Memo items:**

|                                |       |        |       |        |        |
|--------------------------------|-------|--------|-------|--------|--------|
| Revolving credits <sup>8</sup> | 513.7 | 2794.6 | 513.5 | 2577.1 | -217.4 |
| Trade Credits <sup>8</sup>     | 32.1  | 138.9  | 0.0   | 0.0    | -138.9 |

<sup>1</sup> Actual disbursements. Preliminary data. The Euro equivalent is calculated using the monthly average exchange rates of the respective foreign currencies.

<sup>2</sup> Change for the the period January - June 2011 against January - June 2010.

<sup>3</sup> Brady bonds, Eurobonds, Global bonds and government securities (denominated in BGN and in foreign currency) as well as banks' and corporate sector securities, purchased by non-residents are included. In accordance with the residence concept the Brady bonds, Eurobonds and Global bonds held by residents are subtracted.

<sup>4</sup> The change of bonds ownership from residents to non-residents constitutes an increase of liabilities towards non-residents and is reported with a plus sign.

<sup>5</sup> The item includes government and government guaranteed credits and loans of enterprises from the public and private sector. Intercompany loans are not included.

<sup>6</sup> Data source for government and government guaranteed debt: The Register of Government and Government-guaranteed Debt of the Ministry of Finance. Preliminary data for June 2011 as of July 26, 2011.

Data source for nonguaranteed debt: BNB preliminary data for June 2011 as of July 26, 2011. Data comprise only those credits (incl. revolving and intercompany lending) that are declared before the BNB and for which the BNB has received information.

<sup>7</sup> Data source: banks (incl. private and state banks). Deposits related to contingent liabilities are excluded.

<sup>8</sup> Not included in table *Disbursements* by Institutional Sector (table 11).

Table 13

**GROSS EXTERNAL DEBT SERVICE**  
(by Institutional Sectors<sup>1</sup>)

|   | VI. 2010     |             |              | I.-VI. 2010   |              |               | VI. 2011     |             |              | I.-VI. 2011   |              |               | Change <sup>2</sup> |             |                |
|---|--------------|-------------|--------------|---------------|--------------|---------------|--------------|-------------|--------------|---------------|--------------|---------------|---------------------|-------------|----------------|
|   | Principal    | Interest    | Total        | Principal     | Interest     | Total         | Principal    | Interest    | Total        | Principal     | Interest     | Total         | Principal           | Interest    | Total          |
| <b>I. General Government<sup>3</sup></b>          |              |             |              |               |              |               |              |             |              |               |              |               |                     |             |                |
| Short-term  | 74.9         | 7.6         | 82.5         | 208.6         | 77.0         | 339.9         | 25.3         | 8.6         | 33.9         | 204.4         | 77.9         | 282.3         | -4.2                | 1.0         | -3.3           |
| Long-term   | 0.0          | 0.0         | 0.0          | 0.0           | 0.0          | 0.0           | 0.0          | 0.0         | 0.0          | 0.0           | 0.0          | 0.0           | 0.0                 | 0.0         | 0.0            |
| Bonds and Notes <sup>4</sup>                      | 74.9         | 7.6         | 82.5         | 208.6         | 77.0         | 339.9         | 25.3         | 8.6         | 33.9         | 204.4         | 77.9         | 282.3         | -4.2                | 1.0         | -3.3           |
| Loans   | 45.1         | 0.0         | 45.1         | 140.1         | 56.8         | 196.8         | 0.4          | 0.4         | 0.4          | 136.2         | 53.9         | 190.0         | -3.9                | -2.9        | -6.8           |
| Loans   | 29.8         | 7.6         | 37.4         | 68.6          | 20.2         | 88.8          | 24.9         | 8.6         | 33.5         | 68.2          | 24.1         | 92.3          | -0.4                | 3.9         | 3.5            |
| <b>II. Monetary Authorities</b>                   |              |             |              |               |              |               |              |             |              |               |              |               |                     |             |                |
| Short-term  | 0.0          | 0.0         | 0.0          | 0.0           | 0.0          | 0.0           | 0.0          | 0.0         | 0.0          | 0.0           | 0.0          | 0.0           | 0.0                 | 0.0         | 0.0            |
| Long-term   | 0.0          | 0.0         | 0.0          | 0.0           | 0.0          | 0.0           | 0.0          | 0.0         | 0.0          | 0.0           | 0.0          | 0.0           | 0.0                 | 0.0         | 0.0            |
| <b>III. Banks<sup>5</sup></b>                     |              |             |              |               |              |               |              |             |              |               |              |               |                     |             |                |
| Short-term  | 257.7        | 4.9         | 262.6        | 1986.7        | 23.2         | 2009.8        | 41.4         | 4.0         | 45.4         | 1022.4        | 23.8         | 1046.2        | -964.2              | 0.6         | -963.6         |
| Loans   | 147.4        | 0.1         | 147.5        | 1427.8        | 4.2          | 1432.0        | 19.3         | 0.5         | 19.8         | 911.3         | 2.2          | 913.4         | -516.6              | -2.0        | -518.6         |
| Currency and deposits                             | 32.0         | 0.1         | 32.1         | 294.2         | 4.2          | 298.4         | 8.1          | 0.5         | 8.6          | 222.0         | 2.2          | 224.2         | -72.2               | -2.0        | -74.3          |
| Other debt liabilities                            | 0.0          | 0.0         | 0.0          | 1006.7        | 0.0          | 1006.7        | 0.0          | 0.0         | 0.0          | 660.3         | 0.0          | 660.3         | -346.4              | 0.0         | -346.4         |
| Long-term   | 115.4        | 0.0         | 115.4        | 126.9         | 0.0          | 126.9         | 11.2         | 0.0         | 11.2         | 28.9          | 0.0          | 28.9          | -98.0               | 0.0         | -98.0          |
| Bonds and Notes                                   | 110.3        | 4.7         | 115.1        | 558.9         | 19.0         | 577.8         | 22.1         | 3.5         | 25.6         | 111.2         | 21.6         | 132.8         | -447.7              | 2.6         | -445.0         |
| Loans   | 110.3        | 4.7         | 115.1        | 558.8         | 19.0         | 577.7         | 22.1         | 3.5         | 25.6         | 98.6          | 21.6         | 120.2         | -460.2              | 2.6         | -457.5         |
| <b>IV. Other Sectors<sup>6</sup></b>              |              |             |              |               |              |               |              |             |              |               |              |               |                     |             |                |
| Short-term  | 46.4         | 15.1        | 61.4         | 426.0         | 94.4         | 520.5         | 123.1        | 24.1        | 147.2        | 569.9         | 108.7        | 678.6         | 143.9               | 14.3        | 158.1          |
| Money Market Instruments                          | 14.6         | 3.6         | 18.1         | 104.4         | 18.8         | 123.2         | 11.9         | 3.1         | 15.0         | 96.1          | 14.1         | 110.3         | -8.2                | -4.7        | -12.9          |
| Loans   | 14.6         | 3.6         | 18.1         | 104.4         | 18.8         | 123.2         | 11.9         | 3.1         | 15.0         | 96.1          | 14.1         | 110.3         | -8.2                | -4.7        | -12.9          |
| Other debt liabilities                            | 0.0          | 0.0         | 0.0          | 0.0           | 0.0          | 0.0           | 0.0          | 0.0         | 0.0          | 0.0           | 0.0          | 0.0           | 0.0                 | 0.0         | 0.0            |
| Long-term   | 31.8         | 11.5        | 43.3         | 321.7         | 75.6         | 397.3         | 111.3        | 20.9        | 132.2        | 473.8         | 94.6         | 568.4         | 152.1               | 19.0        | 171.1          |
| Bonds and Notes                                   | 0.1          | 0.0         | 0.1          | 32.9          | 0.0          | 32.9          | 39.0         | 0.0         | 39.0         | 41.3          | 0.0          | 41.3          | 8.4                 | 0.0         | 8.4            |
| Loans   | 31.7         | 11.5        | 43.2         | 288.8         | 75.6         | 364.4         | 72.3         | 20.9        | 93.2         | 432.5         | 94.6         | 527.1         | 143.7               | 19.0        | 162.7          |
| <b>V. Direct investment: intercompany lending</b> |              |             |              |               |              |               |              |             |              |               |              |               |                     |             |                |
|   | 463.5        | 35.0        | 498.5        | 1344.4        | 96.4         | 1440.8        | 107.6        | 15.8        | 123.4        | 1081.4        | 93.2         | 1174.7        | -263.0              | -3.2        | -266.1         |
| <b>GROSS EXTERNAL DEBT (III+IV+V)</b>             | <b>842.5</b> | <b>62.5</b> | <b>905.0</b> | <b>3965.7</b> | <b>291.0</b> | <b>4256.7</b> | <b>297.4</b> | <b>52.5</b> | <b>349.9</b> | <b>2878.2</b> | <b>303.6</b> | <b>3181.9</b> | <b>-1087.5</b>      | <b>12.7</b> | <b>-1074.9</b> |
| <b>Memo items:</b>                                |              |             |              |               |              |               |              |             |              |               |              |               |                     |             |                |
| Long-term external debt <sup>7</sup>              | 680.6        | 58.8        | 739.4        | 2433.6        | 267.9        | 2701.5        | 266.3        | 48.9        | 315.1        | 1870.8        | 287.3        | 2158.2        | -562.8              | 19.4        | -543.3         |
| Short-term external debt                          | 161.9        | 3.7         | 165.6        | 1532.2        | 23.1         | 1555.2        | 31.2         | 3.6         | 34.8         | 1007.4        | 16.3         | 1023.7        | -524.8              | -6.8        | -531.5         |
| Public and publicly guaranteed external debt      | 82.3         | 10.9        | 93.3         | 259.6         | 97.8         | 357.3         | 46.2         | 18.4        | 64.6         | 256.4         | 112.1        | 368.5         | -3.2                | 14.4        | 11.2           |
| Private non-guaranteed external debt              | 760.2        | 51.6        | 811.8        | 3706.2        | 193.2        | 3893.4        | 251.3        | 34.1        | 285.4        | 2621.8        | 191.5        | 2813.4        | -1084.3             | -1.7        | -1086.0        |
| Revolving credits <sup>8</sup>                    | 514.0        | 10.4        | 524.4        | 2803.1        | 42.0         | 2845.1        | 563.7        | 6.3         | 590.0        | 2739.5        | 26.5         | 2766.0        | -63.6               | -15.5       | -79.1          |
| Trade Credits <sup>8,9</sup>                      | 0.0          | 0.0         | 0.0          | 0.0           | 0.0          | 0.0           | 0.0          | 0.0         | 0.0          | 0.0           | 0.0          | 0.0           | 0.0                 | 0.0         | 0.0            |

<sup>1</sup> Actual payments. Preliminary data. The Euro equivalent is calculated using the monthly average exchange rates of the respective foreign currencies.

<sup>2</sup> Change for the period January - June 2011 against January - June 2010.

<sup>3</sup> Data source: The Register of Government and Government-guaranteed Debt of the Ministry of Finance. Preliminary data for June 2011 as of July 26, 2011.

<sup>4</sup> Payments related to debt liabilities of the public companies and the government guaranteed debt are excluded.

<sup>5</sup> In accordance with the residence concept external debt payments are reduced with the payments of securities, held by residents and are increased with the securities (issued from residents in the international financial markets), which changed owners from non-residents to residents.

<sup>6</sup> Data source: banks. Deposits connected with contingent liabilities are not included.

<sup>7</sup> Data comprise principal and interest payments on those credits (excl. intercompany lending) that are declared before the BNB and for which the BNB has received information as well as service on government guaranteed loans.

<sup>8</sup> In accordance with the EXTERNAL DEBT STATISTICS, Guide for Compilers and Users, IMF 2003 p.3, 14 and p. 7.5 debt service related to Direct investment are included in the long-term debt.

<sup>9</sup> Not included in table Debt Service by Institutional Sector.

<sup>10</sup> The net increase in the stock of the trade credits in the reporting month is reported in the Disbursements tables (table 11 and 12).

<sup>11</sup> while the net decrease - in the Debt Service tables (tables 13 and 14).



Table 14

**GROSS EXTERNAL DEBT SERVICE**  
(by Instruments<sup>1</sup>)

|   | VI. 2010      |               |               | I.- VI. 2010  |               |               | VI. 2011      |               |               | I.- VI. 2011  |               |               | Change <sup>2</sup> |               |                |
|---|---------------|---------------|---------------|---------------|---------------|---------------|---------------|---------------|---------------|---------------|---------------|---------------|---------------------|---------------|----------------|
|   | Principal     | Interest      | Total         | Principal     | Interest      | Total         | Principal     | Interest      | Total         | Principal     | Interest      | Total         | Principal           | Interest      | Total          |
|   | (EUR million) | (EUR million) | (EUR million) | (EUR million) | (EUR million) | (EUR million) | (EUR million) | (EUR million) | (EUR million) | (EUR million) | (EUR million) | (EUR million) | (EUR million)       | (EUR million) | (EUR million)  |
| Securities <sup>3</sup>                   | 45.2          | 0.0           | 45.2          | 173.0         | 56.8          | 229.8         | 39.4          | 0.0           | 39.4          | 190.0         | 53.9          | 243.9         | 17.0                | -2.9          | 14.1           |
| Money Market Instruments                  | 0.0           | 0.0           | 0.0           | 0.0           | 0.0           | 0.0           | 0.0           | 0.0           | 0.0           | 0.0           | 0.0           | 0.0           | 0.0                 | 0.0           | 0.0            |
| Bonds and Notes <sup>4</sup>              | 45.2          | 0.0           | 45.2          | 173.0         | 56.8          | 229.8         | 39.4          | 0.0           | 39.4          | 190.0         | 53.9          | 243.9         | 17.0                | -2.9          | 14.1           |
| Loans <sup>5,6</sup>                      | 218.4         | 27.5          | 245.9         | 1314.8        | 137.8         | 1452.5        | 139.2         | 36.7          | 175.9         | 917.5         | 156.5         | 1074.0        | -397.3              | 18.7          | -378.5         |
| Short-Term                                | 46.5          | 3.7           | 50.2          | 398.6         | 23.1          | 421.6         | 20.0          | 3.6           | 23.6          | 318.2         | 16.3          | 334.5         | -80.4               | -6.8          | -87.2          |
| Long-Term                                 | 171.8         | 23.8          | 195.6         | 916.2         | 114.7         | 1030.9        | 119.3         | 33.1          | 152.3         | 599.3         | 140.2         | 739.6         | -316.8              | 25.5          | -291.3         |
| Deposits <sup>7</sup>                     | 0.0           | 0.0           | 0.0           | 1006.7        | 0.0           | 1006.7        | 11.2          | 0.0           | 11.2          | 28.9          | 0.0           | 28.9          | -98.0               | 0.0           | -88.0          |
| Other Debt Liabilities                    | 115.4         | 0.0           | 115.4         | 126.9         | 0.0           | 126.9         | 107.6         | 15.8          | 123.4         | 1081.4        | 93.2          | 1174.7        | -263.0              | -3.2          | -266.1         |
| Direct investment: intercompany lending   | 463.5         | 35.0          | 498.6         | 1344.4        | 96.4          | 1440.8        | 297.4         | 52.5          | 349.9         | 2878.2        | 303.6         | 3181.9        | -1087.5             | 12.7          | -1074.9        |
| <b>GROSS EXTERNAL DEBT (III+III+IV+V)</b> | <b>842.5</b>  | <b>62.5</b>   | <b>905.0</b>  | <b>3965.7</b> | <b>291.0</b>  | <b>4256.7</b> | <b>297.4</b>  | <b>52.5</b>   | <b>349.9</b>  | <b>2878.2</b> | <b>303.6</b>  | <b>3181.9</b> | <b>-1087.5</b>      | <b>12.7</b>   | <b>-1074.9</b> |

**Memo Items:**

|                                |       |      |       |        |      |        |       |     |       |        |      |        |       |       |       |
|--------------------------------|-------|------|-------|--------|------|--------|-------|-----|-------|--------|------|--------|-------|-------|-------|
| Revolving credits <sup>8</sup> | 514.0 | 10.4 | 524.4 | 2803.1 | 42.0 | 2845.1 | 583.7 | 6.3 | 590.0 | 2739.5 | 26.5 | 2766.0 | -63.6 | -15.5 | -79.1 |
| Trade Credits <sup>8,9</sup>   | 0.0   | 0.0  | 0.0   | 0.0    | 0.0  | 0.0    | 0.0   | 0.0 | 0.0   | 0.0    | 0.0  | 0.0    | 0.0   | 0.0   | 0.0   |

<sup>1</sup> Actual payments. Preliminary data. The Euro equivalent is calculated using the monthly average exchange rates of the respective foreign currencies.

<sup>2</sup> Change for the period January - June 2011 against January - June 2010.

<sup>3</sup> Brady bonds, Eurobonds, Global bonds and government securities (denominated in BGN and in foreign currency) as well as banks' and corporate sector securities purchased by non-residents are included. In accordance with the residence concept the Brady bonds, Eurobonds and Global bonds held by residents are subtracted.

<sup>4</sup> In accordance with the residence concept external debt payments are reduced with the payments of securities, held by residents and are increased with the securities (issued from residents in the international financial markets), which changed owners from non-residents to residents.

<sup>5</sup> The item includes government and government guaranteed credits and loans of enterprises from the public and private sector. Intercompany loans are not included.

<sup>6</sup> Data source for government and government guaranteed debt: The Register of Government and Government-guaranteed Debt of the Ministry of Finance. Preliminary data for June 2011 as of July 26, 2011.

<sup>7</sup> Data source for nonguaranteed debt: BNB - preliminary data as of July 26, 2011. Data comprise only those credits (incl. revolving and intercompany lending) that are declared before the BNB and for which the BNB has received information.

<sup>8</sup> Data source: banks (incl. private and state banks). Deposits related to contingent liabilities are excluded.

<sup>9</sup> Not included in table Debt Service by Institutional Sector. Payments on banks' revolving credits are not included.

The net increase in the stock of the trade credits in the reporting month is reported in the Disbursements tables (tables 11 and 12), while the net decrease - in the Debt Service tables (table 13 and 14).

Table 15

## NET EXTERNAL DEBT

|   | 2005           | 2006           | XII. 2007       | XII. 2008       | XII. 2009       | VI. 2010        | VII. 2010       | VIII. 2010      | IX. 2010        | X. 2010         | XI. 2010        | XII. 2010       | I. 2011         | II. 2011        | III. 2011       | IV. 2011        | V. 2011         | VI. 2011        | VI. 2011 / XII. 2010 |              |
|---|----------------|----------------|-----------------|-----------------|-----------------|-----------------|-----------------|-----------------|-----------------|-----------------|-----------------|-----------------|-----------------|-----------------|-----------------|-----------------|-----------------|-----------------|----------------------|--------------|
|   |                |                |                 |                 |                 |                 |                 |                 |                 |                 |                 |                 |                 |                 |                 |                 |                 |                 | EUR                  | million      |
| Gross External Debt, EUR million                              | 15 506.9       | 20 690.9       | 29 016.8        | 37 157.2        | 37 724.5        | 37 305.4        | 36 882.4        | 36 491.9        | 36 506.2        | 36 089.6        | 36 354.0        | 36 679.5        | 36 800.9        | 36 775.1        | 36 280.1        | 35 982.8        | 36 128.7        | 36 207.2        | - 472.2              | - 1.3        |
| Gross External Assets, EUR million <sup>1</sup>               | 10 689.4       | 14 146.7       | 17 026.2        | 17 620.9        | 18 312.2        | 17 395.8        | 17 497.6        | 17 682.1        | 18 122.3        | 17 698.9        | 18 050.8        | 18 870.2        | 18 445.8        | 18 618.4        | 18 220.2        | 18 010.3        | 18 465.0        | 18 786.3        | - 84.0               | - 0.4        |
| BNB Reserve Assets, EUR million <sup>2</sup>                  | 7 370.3        | 8 926.4        | 11 936.6        | 12 713.1        | 12 918.9        | 12 154.9        | 12 348.9        | 12 474.5        | 12 764.2        | 12 524.9        | 12 697.4        | 12 976.7        | 12 223.7        | 12 329.3        | 12 208.8        | 11 965.4        | 12 244.6        | 12 339.6        | - 637.0              | - 4.9        |
| Banks Foreign Assets, EUR million <sup>3</sup>                | 2 773.2        | 4 227.1        | 4 026.3         | 3 909.0         | 4 097.5         | 3 941.9         | 3 849.8         | 3 908.6         | 4 067.1         | 3 883.0         | 4 062.4         | 4 075.8         | 4 404.3         | 4 471.3         | 4 385.5         | 4 418.9         | 4 594.4         | 4 820.7         | 744.9                | 18.3         |
| Nonfinancial Sector Deposits Abroad, EUR million <sup>4</sup> | 545.9          | 983.2          | 1 063.2         | 998.7           | 1 295.9         | 1 299.0         | 1 299.0         | 1 299.0         | 1 291.0         | 1 291.0         | 1 291.0         | 1 817.8         | 1 817.8         | 1 817.8         | 1 817.8         | 1 626.0         | 1 626.0         | 1 626.0         | - 191.8              | - 10.6       |
| <b>Net External Debt, EUR million<sup>5</sup></b>             | <b>4 817.5</b> | <b>6 544.2</b> | <b>11 990.7</b> | <b>19 536.3</b> | <b>19 412.3</b> | <b>19 909.6</b> | <b>19 384.7</b> | <b>18 809.8</b> | <b>18 383.9</b> | <b>18 390.7</b> | <b>18 303.2</b> | <b>17 809.3</b> | <b>18 355.0</b> | <b>18 156.7</b> | <b>18 059.8</b> | <b>17 972.5</b> | <b>17 663.8</b> | <b>17 421.0</b> | <b>- 388.3</b>       | <b>- 2.2</b> |
| <b>Net External Debt (% of GDP)</b>                           | <b>20.7</b>    | <b>24.7</b>    | <b>39.0</b>     | <b>55.1</b>     | <b>55.6</b>     | <b>55.3</b>     | <b>53.8</b>     | <b>52.2</b>     | <b>51.0</b>     | <b>51.0</b>     | <b>50.8</b>     | <b>49.4</b>     | <b>47.2</b>     | <b>46.7</b>     | <b>46.4</b>     | <b>46.2</b>     | <b>45.4</b>     | <b>44.8</b>     | <b>-</b>             | <b>-</b>     |

<sup>1</sup> Including BNB reserve assets, banks assets abroad and nonfinancial sector deposits abroad.

<sup>2</sup> Including monetary and non-monetary gold. The BNB reserve assets are calculated in EUR using the respective end of period exchange rates.

Source: Issue Department, BNB.

<sup>3</sup> Monetary Statistics, BNB.

<sup>4</sup> Source: Locational Banking Statistics, BIS - Basel.

<sup>5</sup> Difference between Gross external debt stock and Gross external assets.

Table 16

**Geographical Structure of the External Debt of Other Sectors\***  
**(by country of creditor)**  
**December 2010 – June 2011**

| Country of creditor                   | stock as of end: |               |                |               | Change       |
|---------------------------------------|------------------|---------------|----------------|---------------|--------------|
|                                       | 31.XII.2010      |               | 30.VI.2011     |               |              |
|                                       | mln. EUR         | %             | mln. EUR       | %             | mln. EUR     |
| Great Britain                         | 1155.5           | 10.9%         | 1131.9         | 10.3%         | -23.6        |
| Netherlands                           | 1738.8           | 16.3%         | 1690.7         | 15.5%         | -48.1        |
| Luxembourg                            | 1343.9           | 12.6%         | 1467.2         | 13.4%         | 123.4        |
| International Financial Organisations | 944.1            | 8.9%          | 1019.1         | 9.3%          | 75.0         |
| Austria                               | 1175.0           | 11.0%         | 1187.9         | 10.9%         | 12.9         |
| France                                | 816.8            | 7.7%          | 798.7          | 7.3%          | -18.2        |
| USA                                   | 301.9            | 2.8%          | 297.7          | 2.7%          | -4.2         |
| Germany                               | 421.9            | 4.0%          | 459.4          | 4.2%          | 37.6         |
| Cyprus                                | 310.7            | 2.9%          | 310.5          | 2.8%          | -0.2         |
| Switzerland                           | 230.7            | 2.2%          | 234.4          | 2.1%          | 3.7          |
| Hungary                               | 208.2            | 2.0%          | 213.6          | 2.0%          | 5.5          |
| Virgin Islands, British               | 291.2            | 2.7%          | 307.3          | 2.8%          | 16.0         |
| Japan                                 | 400.4            | 3.8%          | 365.9          | 3.3%          | -34.4        |
| Panama                                | 168.6            | 1.6%          | 167.9          | 1.5%          | -0.7         |
| Greece                                | 50.1             | 0.5%          | 51.0           | 0.5%          | 0.9          |
| Liechtenstein                         | 50.9             | 0.5%          | 34.4           | 0.3%          | -16.5        |
| Russian Federation                    | 55.0             | 0.5%          | 66.5           | 0.6%          | 11.5         |
| Italy                                 | 62.9             | 0.6%          | 88.9           | 0.8%          | 26.0         |
| Czech Republic                        | 20.8             | 0.2%          | 21.9           | 0.2%          | 1.1          |
| Israel                                | 86.1             | 0.8%          | 86.7           | 0.8%          | 0.6          |
| Ireland                               | 61.4             | 0.6%          | 75.0           | 0.7%          | 13.6         |
| Sweden                                | 60.9             | 0.6%          | 49.1           | 0.4%          | -11.7        |
| Romania                               | 10.8             | 0.1%          | 12.0           | 0.1%          | 1.3          |
| Spain                                 | 88.0             | 0.8%          | 89.9           | 0.8%          | 2.0          |
| Belgium                               | 19.9             | 0.2%          | 16.8           | 0.2%          | -3.1         |
| Estonia                               | 21.0             | 0.2%          | 21.3           | 0.2%          | 0.3          |
| Bahamas                               | 28.7             | 0.3%          | 29.1           | 0.3%          | 0.4          |
| Cayman Islands                        | 16.2             | 0.2%          | 19.3           | 0.2%          | 3.2          |
| Malta                                 | 54.8             | 0.5%          | 66.8           | 0.6%          | 12.0         |
| Seychelles                            | 46.9             | 0.4%          | 41.3           | 0.4%          | -5.6         |
| Turkey                                | 15.7             | 0.1%          | 15.6           | 0.1%          | -0.1         |
| Latvia                                | 30.6             | 0.3%          | 30.4           | 0.3%          | -0.2         |
| Marshall Islands                      | 21.4             | 0.2%          | 21.9           | 0.2%          | 0.5          |
| Finland                               | 0.1              | 0.0%          | 0.1            | 0.0%          | 0.0          |
| Slovenia                              | 22.9             | 0.2%          | 22.5           | 0.2%          | -0.4         |
| Denmark                               | 12.2             | 0.1%          | 7.8            | 0.1%          | -4.5         |
| Belize                                | 37.1             | 0.3%          | 37.9           | 0.3%          | 0.8          |
| Lebanon                               | 10.8             | 0.1%          | 10.4           | 0.1%          | -0.3         |
| Norway                                | 12.5             | 0.1%          | 14.0           | 0.1%          | 1.5          |
| Portugal                              | 8.2              | 0.1%          | 7.8            | 0.1%          | -0.4         |
| Other                                 | 229.4            | 2.2%          | 348.7          | 3.2%          | 119.3        |
| <b>Total</b>                          | <b>10642.6</b>   | <b>100.0%</b> | <b>10939.3</b> | <b>100.0%</b> | <b>296.8</b> |

\* Trade credits and debt securities are not included.

Preliminary data, published by quarters and including public companies.

Table 17

**Branch Structure of the External Debt of Other Sectors\***  
**December 2010 – June 2011\*\***

|  | Stock as of end: |               |                |               | Change       |
|--|------------------|---------------|----------------|---------------|--------------|
|  | 31.XII.2010      |               | 30.VI.2011     |               |              |
|  | mln. EUR         | %             | mln. EUR       | %             | mln. EUR     |
| Mining and quarrying   | 111.7            | 1.0%          | 105.5          | 1.0%          | -6.2         |
| Other community, social and personal service activities  | 124.0            | 1.2%          | 156.7          | 1.4%          | 32.6         |
| Public administration and defence; compulsory social security                                      | 125.5            | 1.2%          | 117.5          | 1.1%          | -8.0         |
| Education  | 7.3              | 0.1%          | 7.3            | 0.1%          | 0.0          |
| Real estate, renting and business activities   | 2322.7           | 21.8%         | 2494.6         | 22.8%         | 171.9        |
| Manufacturing  | 748.5            | 7.0%          | 785.2          | 7.2%          | 36.7         |
| Publishing, printing and reproduction of recorded media  | 5.1              | 0.0%          | 4.6            | 0.0%          | -0.6         |
| Manufacture of basic metals  | 155.3            | 1.5%          | 177.4          | 1.6%          | 22.1         |
| Manufacture of motor vehicles, trailers and semi-trailers  | 1.4              | 0.0%          | 1.3            | 0.0%          | -0.1         |
| Manufacture of wood and wood products  | 22.4             | 0.2%          | 18.2           | 0.2%          | -4.2         |
| Manufacture of pulp, paper and paper products  | 38.9             | 0.4%          | 40.2           | 0.4%          | 1.3          |
| Manufacture of electrical machinery and apparatus n.e.c.   | 13.9             | 0.1%          | 4.0            | 0.0%          | -10.0        |
| Manufacture of rubber and plastic products   | 25.3             | 0.2%          | 21.4           | 0.2%          | -3.9         |
| Manufacture of office machinery and computers  | 2.4              | 0.0%          | 2.7            | 0.0%          | 0.3          |
| Manufacture of coke, refined petroleum products and nuclear fuel                                   | 96.0             | 0.9%          | 84.5           | 0.8%          | -11.5        |
| Tanning and dressing of leather; manufacture of luggage, handbags, saddlery, harness and footwear  | 1.0              | 0.0%          | 0.8            | 0.0%          | -0.2         |
| Manufacture of machinery and equipment n.e.c.  | 26.3             | 0.2%          | 24.5           | 0.2%          | -1.8         |
| Manufacture of furniture; manufacturing n.e.c.   | 31.3             | 0.3%          | 31.0           | 0.3%          | -0.3         |
| Manufacture of medical, precision and optical instruments, watches and clocks                      | 1.7              | 0.0%          | 1.7            | 0.0%          | 0.0          |
| Manufacture of fabricated metal products, except machinery and equipment                           | 7.8              | 0.1%          | 8.5            | 0.1%          | 0.7          |
| Manufacture of wearing apparel; dressing and dyeing of fur   | 12.9             | 0.1%          | 11.8           | 0.1%          | -1.1         |
| Manufacture of other transport equipment   | 10.4             | 0.1%          | 9.9            | 0.1%          | -0.5         |
| Manufacture of other non-metallic mineral products   | 67.0             | 0.6%          | 119.7          | 1.1%          | 52.7         |
| Manufacture of radio, television and communication equipment and apparatus                         | 0.2              | 0.0%          | 0.2            | 0.0%          | 0.0          |
| Manufacture of textiles  | 13.2             | 0.1%          | 17.5           | 0.2%          | 4.3          |
| Manufacture of tobacco products  | 55.1             | 0.5%          | 49.2           | 0.4%          | -5.9         |
| Manufacture of chemicals and chemical products   | 24.0             | 0.2%          | 24.1           | 0.2%          | 0.1          |
| Manufacture of food products and beverages   | 133.5            | 1.3%          | 128.7          | 1.2%          | -4.8         |
| Recycling  | 3.4              | 0.0%          | 3.4            | 0.0%          | 0.0          |
| Fishing  | 0.6              | 0.0%          | 0.6            | 0.0%          | 0.0          |
| Agriculture, hunting and forestry  | 70.1             | 0.7%          | 73.8           | 0.7%          | 3.7          |
| Electricity, gas and water supply  | 2134.7           | 20.1%         | 2292.5         | 21.0%         | 157.8        |
| Construction   | 979.0            | 9.2%          | 1007.1         | 9.2%          | 28.1         |
| Transport, storage and communication   | 1010.4           | 9.5%          | 1000.4         | 9.1%          | -10.0        |
| Wholesale and retail trade; repair of motor vehicles, motorcycles and personal and household goods | 1105.7           | 10.4%         | 1082.4         | 9.9%          | -23.3        |
| Retail trade, except of motor vehicles and motorcycles; repair of personal and household goods     | 404.1            | 3.8%          | 408.6          | 3.7%          | 4.5          |
| Wholesale trade and commission trade, except of motor vehicles and motorcycles                     | 620.0            | 5.8%          | 589.8          | 5.4%          | -30.3        |
| Sale, maintenance and repair of motor vehicles and motorcycles; retail sale of automotive fuel     | 81.6             | 0.8%          | 84.1           | 0.8%          | 2.5          |
| Financial intermediation   | 1249.8           | 11.7%         | 1196.6         | 10.9%         | -53.2        |
| Hotels and restaurants   | 288.8            | 2.7%          | 281.6          | 2.6%          | -7.1         |
| Health and social work   | 4.3              | 0.0%          | 4.3            | 0.0%          | 0.0          |
| Private households with employed persons   | 359.6            | 3.4%          | 333.2          | 3.0%          | -26.4        |
| <b>TOTAL</b>   | <b>10642.6</b>   | <b>100.0%</b> | <b>10939.3</b> | <b>100.0%</b> | <b>296.8</b> |

\* Trade credits and debt securities are not included. Preliminary data, published by quarters and including public companies.

\*\* According to the National Classification of Economic Activities - 2003 the Branch structure is based on the BULSTAT registration of the debtors.

Table 18

### Interest Rate Structure of the Financial Liabilities of Other Sectors\*

| Type of Credit              | 2010         |              |               |              |              |               | 2011         |              |               |              |              |               |              |              |               |
|-----------------------------|--------------|--------------|---------------|--------------|--------------|---------------|--------------|--------------|---------------|--------------|--------------|---------------|--------------|--------------|---------------|
|                             | VI           |              |               | IX           |              |               | XII          |              |               | III          |              |               | VI           |              |               |
|                             | long-term    | short-term   | total         | long-term    | short-term   | total         | long-term    | short-term   | total         | long-term    | short-term   | total         | long-term    | short-term   | total         |
| Fixed Interest Rate         | 14.0%        | 9.3%         | 23.2%         | 14.1%        | 9.2%         | 23.3%         | 14.2%        | 9.6%         | 23.8%         | 15.8%        | 9.1%         | 24.9%         | 15.8%        | 9.1%         | 24.9%         |
| Floating Interest Rate      | 36.7%        | 21.1%        | 57.9%         | 36.9%        | 21.4%        | 58.3%         | 37.5%        | 21.4%        | 58.8%         | 37.7%        | 20.6%        | 58.3%         | 38.1%        | 20.4%        | 58.4%         |
| Other Type Interest Rate ** | 8.5%         | 4.4%         | 12.9%         | 8.4%         | 4.1%         | 12.5%         | 7.9%         | 4.0%         | 12.0%         | 9.0%         | 2.4%         | 11.4%         | 8.9%         | 2.3%         | 11.2%         |
| Interest-Free               | 1.4%         | 4.6%         | 6.0%          | 1.4%         | 4.5%         | 5.9%          | 1.0%         | 4.4%         | 5.4%          | 1.1%         | 4.3%         | 5.4%          | 1.2%         | 4.3%         | 5.5%          |
| <b>TOTAL</b>                | <b>60.6%</b> | <b>39.4%</b> | <b>100.0%</b> | <b>60.8%</b> | <b>39.2%</b> | <b>100.0%</b> | <b>60.6%</b> | <b>39.4%</b> | <b>100.0%</b> | <b>63.6%</b> | <b>36.4%</b> | <b>100.0%</b> | <b>64.0%</b> | <b>36.0%</b> | <b>100.0%</b> |

\* The statistics do not include bonds and notes of *Other Sectors*, trade and revolving credits, intercompany loans, guaranteed debt of enterprises and reported by households liabilities. Quarterly data are published.

\*\* These encompass interest payments' schemes, which utilize more than one interest rate level or for which at the moment of credit declaration the interest cannot be defined by the debtor.

EXTERNAL SECTOR INDICATORS

|   | 2002    | 2003    | 2004    | 2005    | 2006    | 2007    | 2008    | 2009    | 2010    | 2010    | 2011    | V | 2010    | 2011    | VI | 2010    | 2011    |  |
|---|---------|---------|---------|---------|---------|---------|---------|---------|---------|---------|---------|---|---------|---------|----|---------|---------|--|
| <b>Gross External Debt<sup>1</sup></b>                  |         |         |         |         |         |         |         |         |         |         |         |   |         |         |    |         |         |  |
| Gross external debt, Euro million <sup>2</sup>          | 10768.9 | 10640.6 | 12561.9 | 15506.9 | 20690.9 | 29016.8 | 37157.2 | 37724.5 | 36679.5 | 37170.4 | 35982.8 |   | 36982.8 | 36128.7 |    | 37305.4 | 36207.2 |  |
| Public Sector External Debt, Euro million <sup>3</sup>  | 7960.6  | 7047.9  | 6426.5  | 5197.6  | 4547.3  | 4092.3  | 3915.8  | 4178.7  | 4287.5  | 4243.5  | 4123.8  |   | 4286.8  | 4212.3  |    | 4277.7  | 4173.4  |  |
| Private Sector External Debt, Euro million <sup>4</sup> | 2808.3  | 3592.7  | 6135.4  | 10309.3 | 16143.6 | 24924.5 | 33241.4 | 33545.8 | 32392.0 | 32926.9 | 31859.0 |   | 32696.0 | 31916.5 |    | 33027.7 | 32033.8 |  |
| Gross External Debt (% GDP) <sup>5</sup>                | 63.5    | 58.1    | 61.7    | 66.7    | 82.0    | 94.3    | 104.9   | 108.0   | 101.8   | 103.2   | 92.5    |   | 102.6   | 92.9    |    | 103.5   | 93.1    |  |
| Public Sector External Debt (% GDP)                     | 46.9    | 38.5    | 31.6    | 22.3    | 18.0    | 13.3    | 11.1    | 12.0    | 11.9    | 11.8    | 10.6    |   | 11.9    | 10.8    |    | 11.9    | 10.7    |  |
| Private Sector External Debt (% GDP)                    | 16.5    | 19.6    | 30.1    | 44.3    | 64.0    | 81.0    | 93.8    | 96.0    | 89.9    | 91.4    | 81.9    |   | 90.7    | 82.1    |    | 91.7    | 82.4    |  |
| Gross External Debt (% of exports of GNFS) <sup>6</sup> | 126.1   | 112.5   | 110.7   | 119.0   | 127.7   | 158.8   | 180.6   | 227.0   | 175.7   |         |         |   |         |         |    |         |         |  |
| Short term debt/Gross external debt (%)                 | 14.1    | 14.3    | 19.4    | 25.4    | 29.8    | 32.3    | 35.4    | 32.7    | 31.4    | 31.3    | 29.5    |   | 31.0    | 29.5    |    | 31.4    | 30.0    |  |
| Short term debt (% GDP)                                 | 8.9     | 8.3     | 12.0    | 16.9    | 24.4    | 30.5    | 37.1    | 35.3    | 31.9    | 32.3    | 27.3    |   | 31.8    | 27.4    |    | 32.5    | 27.9    |  |
| <b>Gross External Debt Service<sup>1</sup></b>          |         |         |         |         |         |         |         |         |         |         |         |   |         |         |    |         |         |  |
| Gross External Debt Service, Euro million <sup>7</sup>  | 1403.1  | 1333.4  | 2621.1  | 6028.0  | 4586.3  | 6290.9  | 7253.0  | 7376.2  | 7082.5  | 2511.9  | 2522.6  |   | 3351.7  | 2831.9  |    | 4256.7  | 3181.9  |  |
| Principal, Euro million                                 | 1026.6  | 966.6   | 2271.2  | 5635.9  | 4124.7  | 5647.4  | 6493.3  | 6700.8  | 6554.9  | 2312.6  | 2327.4  |   | 3123.2  | 2580.8  |    | 3965.7  | 2878.2  |  |
| Interest, Euro million                                  | 376.6   | 366.8   | 349.8   | 392.1   | 461.5   | 643.5   | 759.7   | 675.4   | 527.6   | 199.3   | 195.2   |   | 228.5   | 251.2   |    | 291.0   | 303.6   |  |
| Public Sector Debt Service, Euro million <sup>3</sup>   | 995.6   | 737.2   | 1473.9  | 2429.0  | 1105.5  | 1188.4  | 1235.4  | 599.1   | 613.3   | 184.6   | 271.2   |   | 264.1   | 303.9   |    | 357.3   | 368.5   |  |
| Principal, Euro million                                 | 660.5   | 424.3   | 1182.9  | 2138.1  | 865.1   | 935.8   | 1001.7  | 414.1   | 445.2   | 107.8   | 194.6   |   | 177.2   | 210.2   |    | 259.6   | 256.4   |  |
| Interest, Euro million                                  | 335.1   | 312.9   | 291.0   | 290.9   | 240.4   | 252.5   | 233.7   | 185.0   | 168.1   | 76.8    | 76.6    |   | 86.8    | 93.7    |    | 97.8    | 112.1   |  |
| Private Sector Debt Service, Euro million <sup>4</sup>  | 407.6   | 596.2   | 1147.2  | 3599.0  | 3480.7  | 5102.6  | 6017.6  | 6777.1  | 6489.3  | 2327.3  | 2251.4  |   | 3087.6  | 2528.0  |    | 3899.4  | 2813.4  |  |
| Principal, Euro million                                 | 366.1   | 542.2   | 1088.4  | 3497.9  | 3259.6  | 4711.6  | 5491.6  | 6286.8  | 6109.7  | 2204.8  | 2132.8  |   | 2946.0  | 2370.6  |    | 3706.2  | 2621.8  |  |
| Interest, Euro million                                  | 41.5    | 53.9    | 58.8    | 101.2   | 221.1   | 391.0   | 525.9   | 490.4   | 359.5   | 122.5   | 118.6   |   | 141.7   | 157.5   |    | 193.2   | 191.5   |  |
| Gross External Debt service (% of GDP)                  | 8.3     | 7.3     | 12.9    | 25.9    | 18.2    | 20.4    | 20.5    | 21.1    | 19.7    | 7.0     | 6.5     |   | 9.3     | 7.3     |    | 11.8    | 8.2     |  |
| Gross External Debt Service (% of exports of GNFS)      | 16.4    | 14.1    | 23.1    | 46.3    | 28.3    | 34.4    | 35.2    | 44.4    | 33.9    | 47.6    | 33.2    |   | 49.0    | 29.4    |    | 48.3    | 27.0    |  |
| <b>Balance of Payments (year to date)<sup>1</sup></b>   |         |         |         |         |         |         |         |         |         |         |         |   |         |         |    |         |         |  |
| (in millions Euro)                                      |         |         |         |         |         |         |         |         |         |         |         |   |         |         |    |         |         |  |
| Current Account   | -402.5  | -972.3  | -1306.9 | -2705.7 | -4647.8 | -7755.2 | -8162.4 | -3117.8 | -356.2  | -726.1  | 203.0   |   | -832.0  | 377.7   |    | -862.5  | 541.8   |  |
| Trade Balance <sup>8</sup>                              | -1878.0 | -2425.6 | -2953.5 | -4409.7 | -5562.3 | -7245.3 | -8597.3 | -4173.6 | -2412.5 | -862.8  | -123.0  |   | -1198.9 | -313.2  |    | -1354.1 | -488.2  |  |
| Exports, f.o.b.   | 6062.9  | 6668.2  | 7984.9  | 9486.3  | 12011.9 | 13511.9 | 15203.8 | 11699.3 | 15588.3 | 4240.3  | 6381.0  |   | 5452.2  | 8037.9  |    | 6865.3  | 9630.6  |  |
| Imports, f.o.b.   | 6.1     | 10.0    | 19.7    | 18.6    | 26.9    | 12.5    | 12.5    | -23.1   | 33.2    | 21.5    | 50.5    |   | 24.0    | 47.4    |    | 27.2    | 40.3    |  |
| Imports, f.o.b. (yoj percentage change)                 | 7940.9  | 9093.8  | 10938.4 | 13876.1 | 17574.1 | 20757.2 | 23801.1 | 15872.8 | 18000.8 | 5103.1  | 6504.0  |   | 6651.1  | 8219.3  |    | 8219.3  | 10118.8 |  |
| Imports, f.o.b. (yoj percentage change)                 | 6.0     | 14.5    | 20.3    | 26.9    | 26.7    | 18.1    | 14.7    | -33.3   | 13.4    | -0.3    | 27.5    |   | 2.9     | 25.6    |    | 5.3     | 23.1    |  |
| Current and Capital Account                             | -402.6  | -972.5  | -1143.5 | -2470.2 | -4467.8 | -8342.6 | -7885.0 | -2640.6 | -65.4   | -663.8  | 217.1   |   | -717.5  | 393.9   |    | -889.8  | 602.8   |  |
| Capital and Financial Account                           | 1842.8  | 2324.9  | 2458.3  | 4213.6  | 3089.0  | 11750.6 | 1667.2  | 289.9   | -506.8  | -1152.5 | -586.7  |   | -1213.4 | -1247.4 |    | -520.1  | -1247.4 |  |
| Financial Account (in millions Euro)                    | 1842.9  | 2325.1  | 2294.9  | 3978.1  | 7084.6  | 13676.4 | 11473.2 | 1190.0  | -0.9    | -569.1  | -1166.6 |   | -701.2  | -1229.5 |    | -492.8  | -1308.4 |  |
| Foreign Direct Investment <sup>9</sup>                  | 980.0   | 1850.5  | 2735.9  | 3152.1  | 6221.6  | 9051.8  | 6727.8  | 2412.2  | 1638.6  | 378.9   | -60.2   |   | 384.0   | -15.9   |    | 532.7   | 7.9     |  |
| FDI/CA deficit (%)                                      | 243.5   | 190.3   | 209.3   | 116.5   | 133.9   | 116.7   | 82.4    | 77.4    | 460.0   | 52.2    |         |   | 46.2    |         |    | 61.8    |         |  |
| Portfolio Investment - Assets <sup>10</sup>             | 227.2   | -69.2   | 18.2    | 17.8    | -289.4  | -129.3  | -252.7  | -574.8  | -574.8  | -98.9   | 73.6    |   | -126.8  | -64.6   |    | -311.5  | -126.6  |  |
| Portfolio Investment - Liabilities <sup>10</sup>        | -325.9  | -121.8  | -435.6  | -1054.6 | 581.6   | -389.1  | -477.9  | 4.5     | -86.3   | -22.9   | -92.0   |   | -107.5  | -101.6  |    | -149.3  | -135.2  |  |
| Other investments - Assets <sup>10</sup>                | 331.8   | 228.8   | -1366.7 | -30.7   | -2348.8 | 552.2   | 131.5   | -627.7  | 368.5   | 69.5    | -641.4  |   | 386.2   | -710.3  |    | 462.7   | -882.9  |  |
| Other investments - Liabilities <sup>10</sup>           | 658.7   | 460.1   | 1897.0  | 1909.4  | 3173.1  | 4865.5  | 5903.6  | -91.3   | -1142.6 | -843.4  | -408.8  |   | -1160.6 | -294.4  |    | -923.2  | -123.0  |  |
| <b>(% of GDP)</b>                                       |         |         |         |         |         |         |         |         |         |         |         |   |         |         |    |         |         |  |
| Current Account   | -2.4    | -5.3    | -6.4    | -11.6   | -17.6   | -25.2   | -23.0   | -8.9    | -1.0    | -2.0    | 0.5     |   | -2.3    | 1.0     |    | -2.4    | 1.4     |  |
| Trade Balance   | -11.1   | -13.2   | -14.5   | -19.0   | -23.5   | -23.5   | -24.3   | -11.9   | -6.7    | -2.4    | -0.3    |   | -3.3    | -0.8    |    | -3.8    | -1.3    |  |
| Exports, f.o.b.   | 35.7    | 36.4    | 39.2    | 40.7    | 45.4    | 43.9    | 42.9    | 33.5    | 43.3    | 11.8    | 16.4    |   | 15.1    | 20.7    |    | 19.1    | 24.8    |  |
| Imports, f.o.b.   | 46.8    | 49.7    | 53.7    | 59.7    | 66.4    | 67.5    | 67.2    | 45.4    | 50.0    | 14.2    | 16.7    |   | 18.5    | 21.5    |    | 22.8    | 26.0    |  |
| Services, net   | 3.0     | 3.0     | 3.2     | 3.5     | 3.5     | 3.8     | 3.8     | 3.7     | 3.7     | 0.2     | 0.5     |   | 0.4     | 0.9     |    | 1.1     | 1.7     |  |
| Travel balance  | 2.5     | 3.2     | 3.4     | 3.9     | 3.4     | 4.2     | 4.2     | 4.1     | 5.0     | 0.3     | 0.3     |   | 0.6     | 0.6     |    | 1.3     | 1.3     |  |
| Income balance  | 2.4     | 1.6     | 1.2     | 0.3     | -2.6    | -7.7    | -5.0    | -3.4    | -3.9    | -1.2    | -0.9    |   | -1.4    | -1.1    |    | -2.0    | -1.7    |  |
| Current Transfers balance                               | 3.3     | 3.3     | 3.7     | 3.5     | 2.5     | 2.2     | 2.4     | 2.7     | 4.3     | 1.4     | 1.2     |   | 2.1     | 2.0     |    | 2.3     | 2.7     |  |
| Current and Capital Account                             | -2.4    | -5.3    | -5.6    | -10.6   | -16.9   | -27.1   | -22.3   | -7.6    | -0.2    | -1.8    | 0.6     |   | -2.0    | 1.0     |    | -2.5    | 1.5     |  |
| Capital and Financial Account                           | 10.9    | 12.7    | 12.1    | 18.1    | 27.4    | 42.5    | 33.2    | 4.8     | 0.8     | -1.4    | -3.0    |   | -1.6    | -3.1    |    | -1.4    | -3.2    |  |
| Financial Account                                       | 10.9    | 12.7    | 11.3    | 17.1    | 26.8    | 44.4    | 32.4    | 3.4     | 0.0     | -1.6    | -3.0    |   | -1.9    | -3.2    |    | -1.4    | -3.4    |  |
| FDI   | 5.8     | 10.1    | 13.4    | 13.6    | 23.5    | 29.4    | 19.0    | 6.9     | 4.5     | 1.1     | -0.2    |   | 1.1     | 0.0     |    | 1.5     | 0.0     |  |
| Portfolio Investment - Assets                           | 1.3     | -0.4    | 0.1     | 0.1     | -1.1    | -0.4    | -0.7    | -1.6    | -1.6    | -0.3    | 0.2     |   | -0.4    | -0.2    |    | -0.9    | -0.3    |  |
| Portfolio Investment - Liabilities                      | -1.9    | -0.7    | -2.1    | -4.5    | 2.2     | -1.3    | -1.3    | 0.0     | -0.2    | -0.1    | -0.2    |   | -0.3    | -0.3    |    | -0.4    | -0.3    |  |
| Other Investment - Assets                               | 2.0     | 1.2     | -6.7    | -8.9    | 1.8     | 0.4     | -1.8    | 1.0     | 0.2     | 0.2     | -1.6    |   | 1.1     | -1.8    |    | 1.3     | -2.3    |  |
| Other Investment - Liabilities                          | 3.9     | 2.5     | 9.3     | 8.2     | 12.0    | 15.8    | 16.7    | -0.3    | -3.2    | -2.3    | -1.1    |   | -3.2    | -0.8    |    | -2.6    | -0.3    |  |

EXTERNAL SECTOR INDICATORS

|  | 2002    | 2003    | 2004    | 2005     | 2006     | 2007     | 2008     | 2009     | 2010     | 2010    | 2011    | V       | 2010    | 2011    | VI       | 2010    | 2011 |
|--|---------|---------|---------|----------|----------|----------|----------|----------|----------|---------|---------|---------|---------|---------|----------|---------|------|
| <b>Other indicators</b> <sup>11</sup>                                    |         |         |         |          |          |          |          |          |          |         |         |         |         |         |          |         |      |
| Gross External Assets (in million Euro) <sup>12</sup>                    | 6896.1  | 7203.3  | 9482.3  | 10689.4  | 14146.7  | 17026.2  | 17620.9  | 18312.2  | 18870.2  | 17485.3 | 18010.3 | 17351.6 | 18465.0 | 18786.3 | 17395.8  | 18786.3 |      |
| BNB reserve assets (in million Euro) <sup>13</sup>                       | 4574.8  | 5308.6  | 6770.4  | 7370.3   | 8926.4   | 11936.6  | 12713.1  | 12918.9  | 12976.7  | 12030.4 | 11965.4 | 12211.9 | 12244.6 | 12339.6 | 12154.9  | 12339.6 |      |
| CB foreign assets (in million Euro)                                      | 1944.5  | 1535.2  | 2288.4  | 2773.2   | 4227.1   | 4026.3   | 3909.0   | 4097.5   | 4075.8   | 4315.4  | 4418.9  | 4000.2  | 4594.4  | 4820.7  | 3941.9   | 4820.7  |      |
| Nonfinancial sector deposits abroad (in million Euro) <sup>14</sup>      | 376.8   | 359.5   | 423.6   | 545.9    | 993.2    | 1063.2   | 998.7    | 1295.9   | 1817.8   | 1139.6  | 1626.0  | 1139.6  | 1626.0  | 1626.0  | 1299.0   | 1626.0  |      |
| Net External Debt (in million Euro) <sup>15</sup>                        | 3872.8  | 3437.3  | 3079.6  | 4817.5   | 6544.2   | 11930.7  | 19536.3  | 19412.3  | 17809.3  | 19685.1 | 17972.5 | 19631.2 | 17663.8 | 19909.6 | 17421.0  | 19909.6 |      |
| Net External Debt (% GDP)  | 22.8    | 18.8    | 15.1    | 20.7     | 24.7     | 39.0     | 55.1     | 55.6     | 49.4     | 54.6    | 46.2    | 54.5    | 45.4    | 44.8    | 55.3     | 44.8    |      |
| International Investment Position, Net (in million Euro) <sup>16</sup>   | -4297.3 | -4816.6 | -5476.0 | -10257.8 | -15349.7 | -24965.5 | -34559.3 | -35578.9 | -35184.8 |         |         |         |         |         | -36146.0 |         |      |
| International Investment Position, Net (% of GDP)                        | -25.3   | -26.3   | -26.9   | -44.1    | -58.0    | -81.1    | -97.5    | -101.9   | -97.6    |         |         |         |         |         | -100.3   |         |      |
| BNB reserve assets in months of GNFS imports <sup>17</sup>               | 5.6     | 5.7     | 6.0     | 5.3      | 5.1      | 5.9      | 5.5      | 8.0      | 7.3      | 7.5     | 6.3     | 7.5     | 6.4     | 7.4     | 6.4      | 7.4     |      |
| BNB reserve assets/ Short term debt                                      | 301.9   | 348.1   | 277.3   | 187.4    | 145.0    | 127.2    | 96.8     | 104.8    | 112.8    | 103.4   | 112.6   | 106.5   | 114.8   | 103.7   | 113.6    | 113.6   |      |
| BNB reserve assets (%)/ FX deposits of population <sup>18</sup>          | 196.8   | 213.6   | 257.9   | 221.3    | 206.9    | 202.1    | 179.0    | 158.7    | 154.9    | 146.5   | 142.7   | 148.3   | 143.8   | 148.1   | 144.8    | 144.8   |      |
| Nominal effective exchange rate (Index June 1997=100) <sup>19</sup>      | 121.6   | 126.8   | 127.9   | 124.1    | 126.4    | 127.5    | 131.2    | 134.0    | 130.5    | 131.6   | 131.8   | 130.8   | 132.3   | 129.5   | 132.2    | 132.2   |      |
| Real effective exchange rate (Index June 1997=100), e.o.p. <sup>20</sup> | 131.4   | 140.0   | 141.7   | 141.5    | 149.0    | 162.0    | 173.9    | 174.3    | 172.0    | 171.8   | 175.7   | 171.9   | 175.7   | 169.9   | 175.1    | 175.1   |      |

<sup>11</sup> Data for 2010 and 2011 are preliminary. The balance of payments data for May 2011 are revised. Flow data include the period from the beginning of the year to the reporting month, stock data are as of the end of the reporting month.

<sup>12</sup> The Euro equivalent is calculated using the e.o.p. exchange rates of the respective foreign currencies.

<sup>13</sup> Data on external liabilities on trade credits are included in the debt stock.

<sup>14</sup> Includes General Government's external debt, the external debt of banks from the public sector and of non-financial enterprises from the public sector, as well as the publicly guaranteed external debt of the private sector (in accordance with para 5.5-5.6 of External Debt Statistics: Guide for Compilers and Users, 2003). Sources: Ministry of Finance, Bulgarian National Bank, banks, local companies.

<sup>15</sup> Sources: banks, local companies.

<sup>16</sup> In the calculation of the indicators in which gross domestic product (GDP) is included the following data are used:

<sup>17</sup> GDP for 2011 at Euro 38,892 million (BNB estimate) and GDP for 2010 – EUR 36 032.9 (NSI data as of 11.03.2011)

<sup>18</sup> Goods and non-factor services. The indicator is calculated on an annual basis

<sup>19</sup> Actual payments. The Euro equivalent is calculated using the monthly average exchange rates of the respective foreign currencies. Payments on revolving credits are not included.

<sup>20</sup> Preliminary data for 2010. For 2011 preliminary NSI data as of 4 August 2011, which include data from the system INTRASTAT

for the EU member states and from customs declarations for non-EU countries.

<sup>12</sup> Data are provided by direct investment companies reporting to the BNB, by the Agency for Privatization, the NSI, the Central Depository and the banks

<sup>13</sup> A negative sign (-) denotes an increase in assets and a decrease in liabilities and a positive sign (+) denotes a decrease in assets and an increase in liabilities. Including Financial Derivatives

<sup>14</sup> Data source for the monetary aggregates, banks' assets abroad and the forex deposits: Monetary Survey (June 2011)

<sup>15</sup> Including BNB reserve assets, banks' assets abroad and nonfinancial sector deposits abroad

<sup>16</sup> Including monetary and non-monetary gold. Source: Issue Department, BNB.

<sup>17</sup> Source: BIS International Banking Statistics. For 2011 the last published data for December 2010 are used

<sup>18</sup> Difference between the amount of the Gross external debt and the amount of the Gross external assets

<sup>19</sup> The International Investment Position data are published quarterly within 3 months after the close of the reporting period

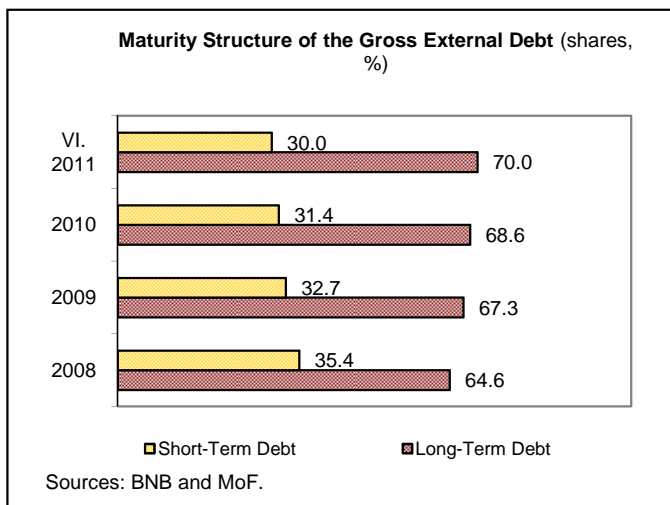
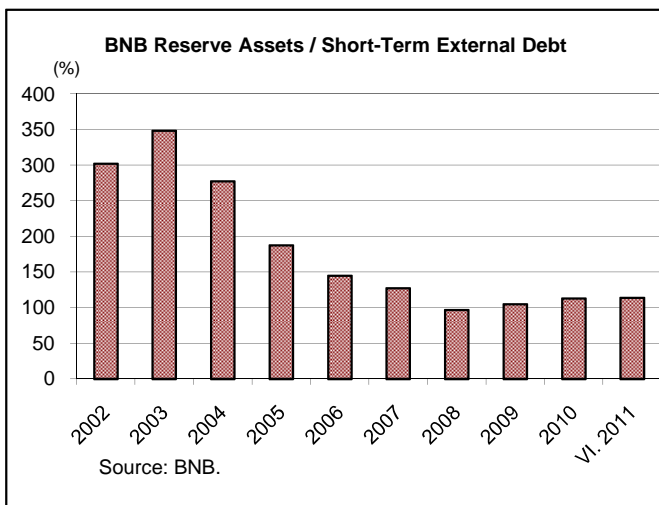
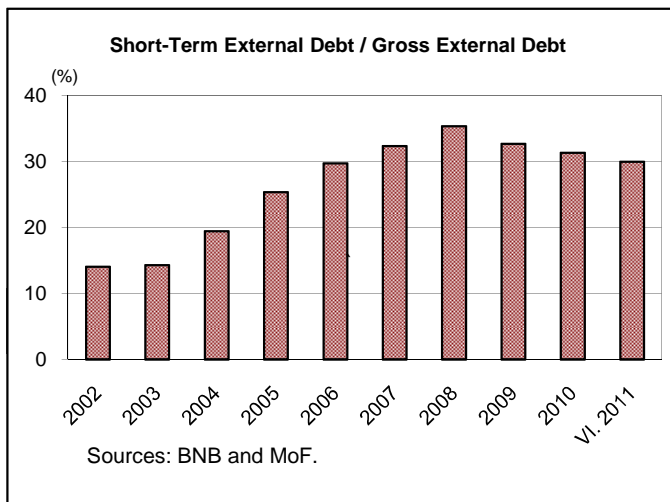
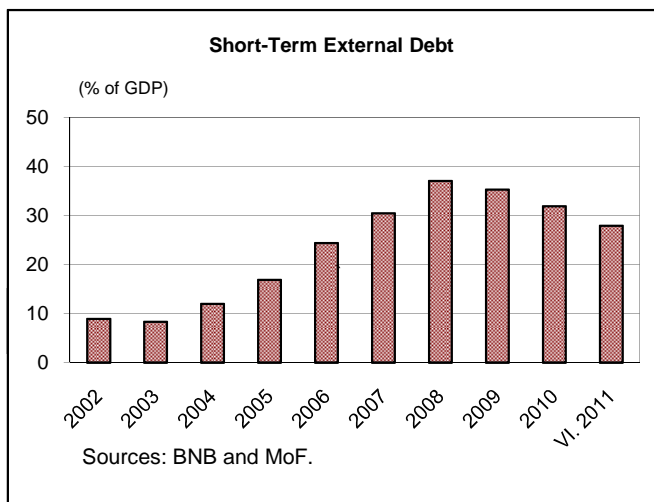
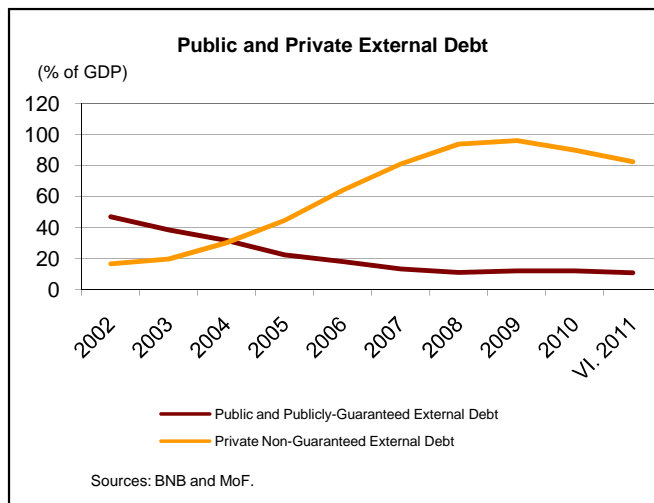
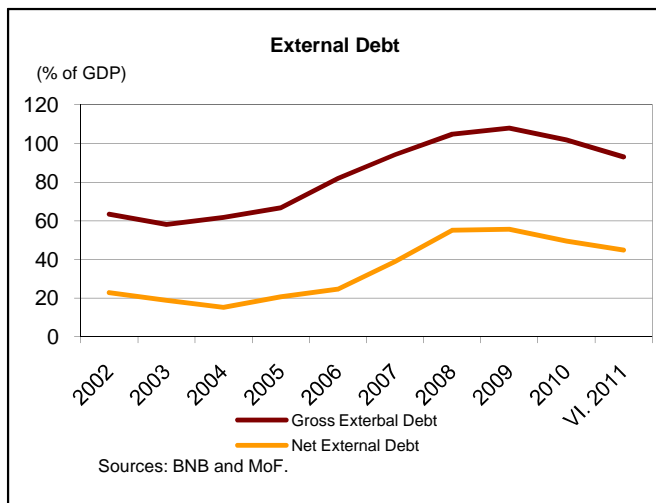
<sup>20</sup> The proportion (in months) of BNB Reserve Assets as of end of reporting month to average Imports of Goods and Non-Factor Services for the last 12 months.

<sup>16</sup> Forex deposits of population and non-financial sector.

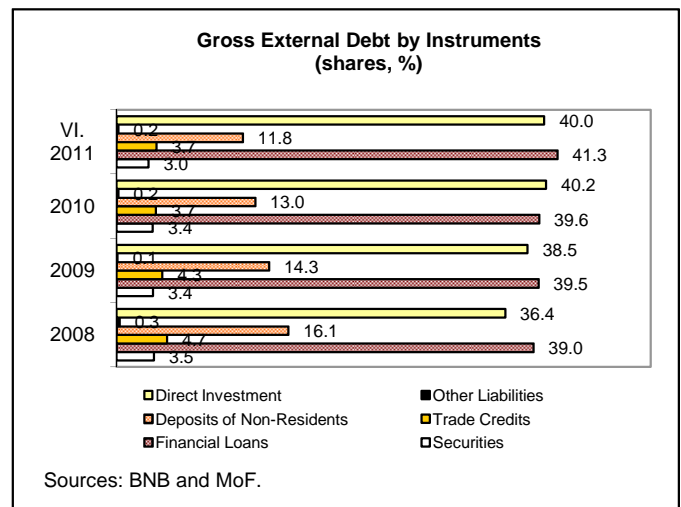
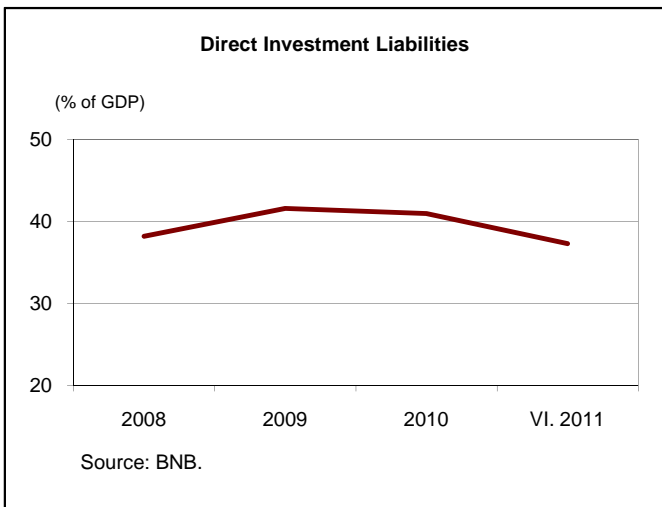
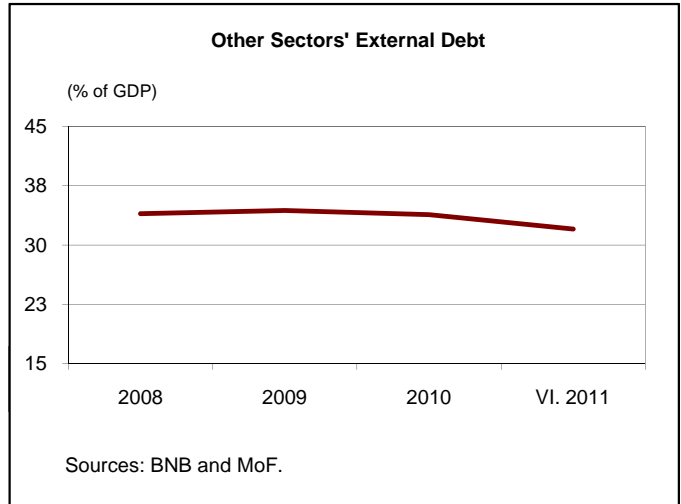
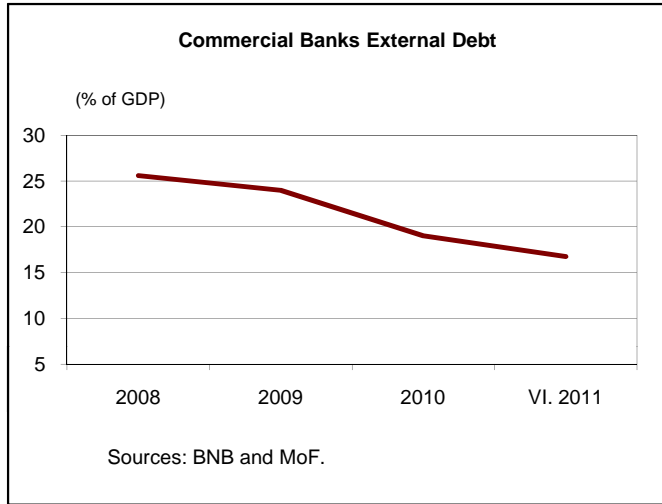
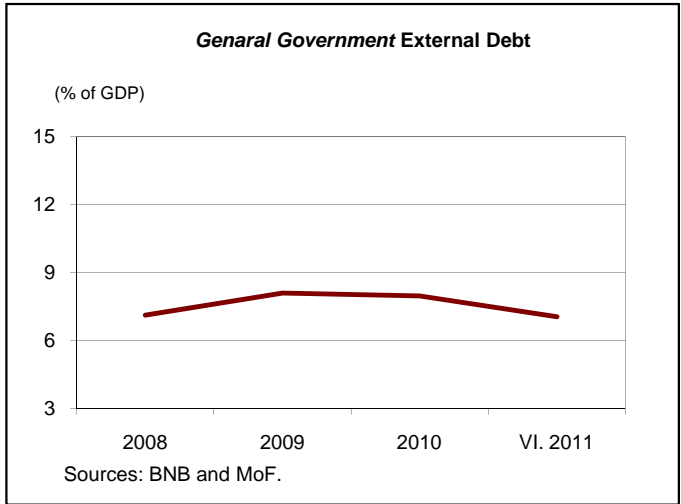
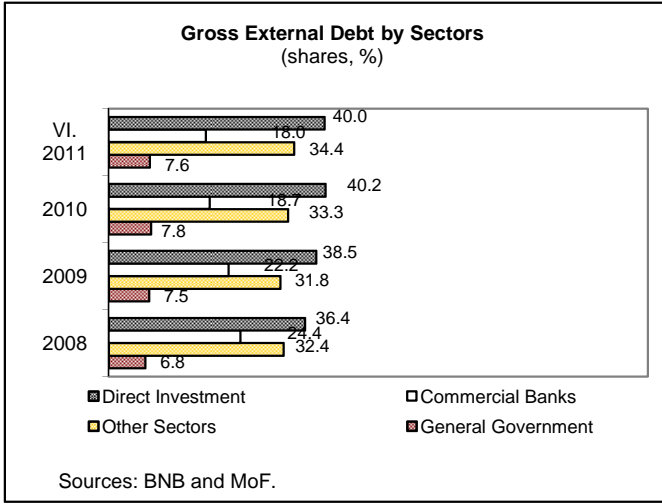
<sup>17</sup> The index is for the reporting month.

<sup>18</sup> CPI based index calculated for the reporting month.

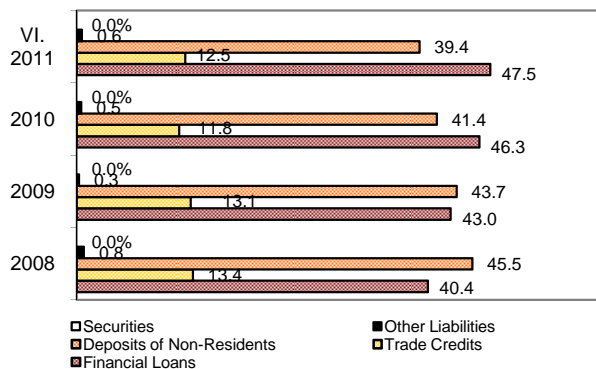
## External Debt Indicators





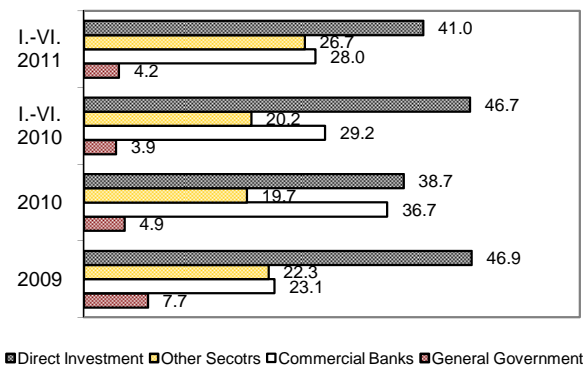


**Short-Term External Debt by Instruments**  
(shares, %)



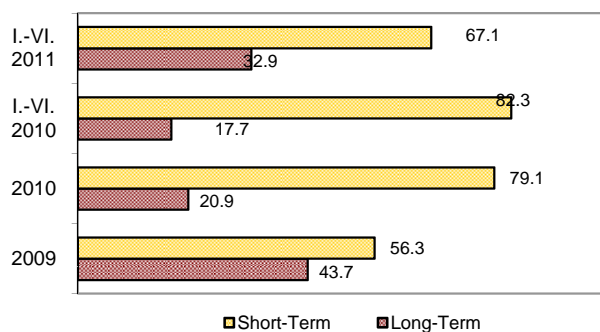
Sources: BNB and MoF.

**Gross External Debt Disbursements by Sectors**  
(shares, %)



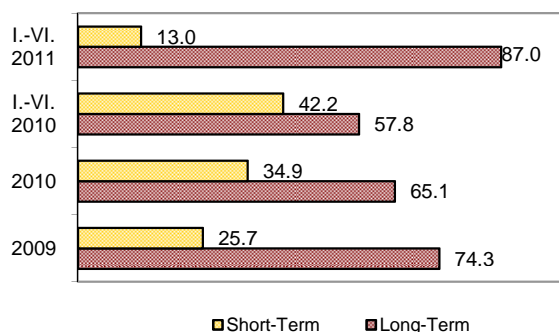
Sources: BNB and MoF.

**Gross External Debt Disbursements of Commercial Banks, Maturity Structure**  
(shares, %)



Sources: BNB and MoF.

**Gross External Debt Disbursements of Other Sectors, Maturity Structure**  
(shares, %)



Sources: BNB and MoF.

**Gross External Debt Service**

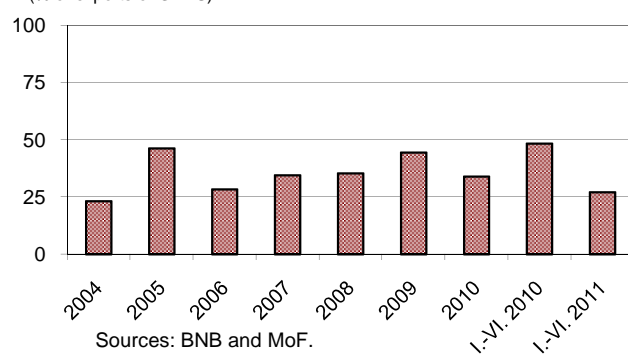
(% of GDP)



Sources: BNB and MoF.

**Gross External debt Service**

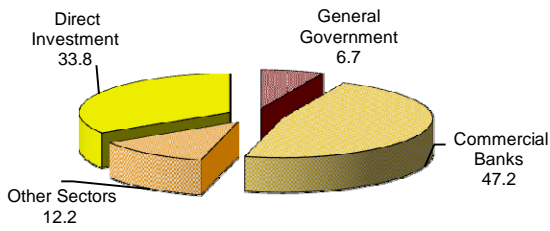
(% of exports of GNFS)



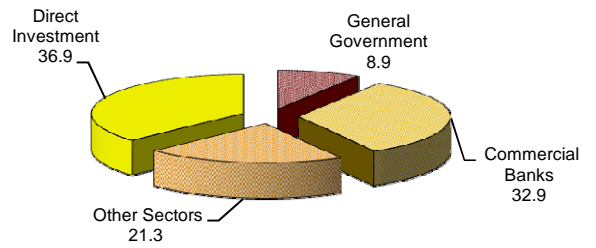
Sources: BNB and MoF.

## GROSS EXTERNAL DEBT SERVICE BY SECTORS

**(JANUARY - JUNE 2010)**



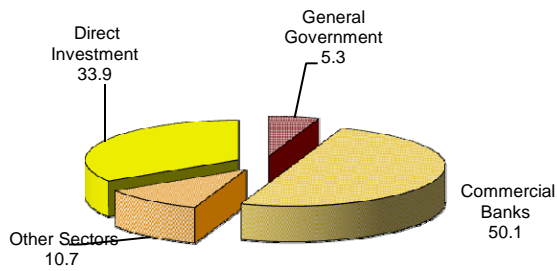
**(JANUARY - JUNE 2011)**



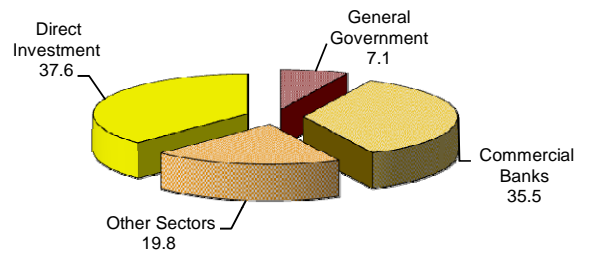
Sources: BNB and MoF.

## PRINCIPLE PAYMENTS BY SECTORS

**(JANUARY - JUNE 2010)**



**(JANUARY - JUNE 2011)**

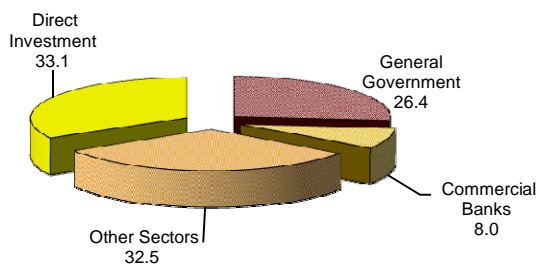


Sources: BNB and MoF.

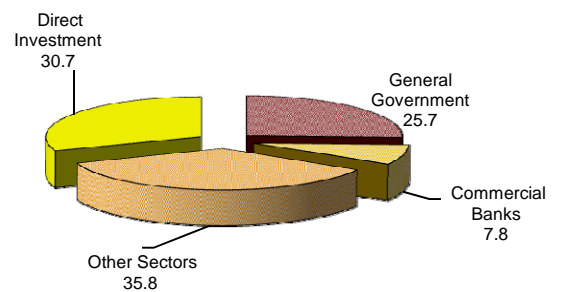
Sources: BNB and MoF.

## INTEREST PAYMENTS BY SECTORS

**(JANUARY - JUNE 2010)**



**(JANUARY - JUNE 2011)**



Sources: BNB and MoF.

Sources: BNB and MoF.



## METHODOLOGICAL NOTES ON THE COMPILATION OF THE GROSS EXTERNAL DEBT OF BULGARIA<sup>1</sup>

For the compilation of the Gross External Debt, the Bulgarian National Bank (BNB) follows the international standards and requirements set in the "*External Debt Statistics: Guide for Compilers and Users, 2003*"<sup>2</sup> and in the "*Balance of Payments Manual*", IMF, 5-th edition, 1993. That ensures international compatibility of the data on one hand, and on the other hand - consistency between the external debt statistics and the balance of payments, international investment position and national accounts. The data on the gross external debt are an important source of information for given items in the balance of payments and in the international investment position.

The BNB compiles and disseminates monthly statistical data on the gross external debt presented by institutional sectors.

Publications comprise monthly data on (1) gross external debt stock (2) gross external debt service and (3) disbursements. Additional analytical external debt data by creditors is disseminated quarterly.

### I. ACCOUNTING PRINCIPLES AND CONVENTIONS

When compiling the debt statistics, the BNB follows the international definition of gross external debt - "Gross external debt, at any given time, is the outstanding amount of those actual current, and not contingent, liabilities that require payment(s) of principal and/or interest by the debtor at some point(s) in the future and that are owed to non-residents by residents of an economy."<sup>3</sup>

The main criterion for a liability to be included in the gross external debt of the country is that it is issued by a resident and is owed to a non-resident<sup>4</sup>, regardless of whether it is issued on domestic or international, money or capital markets. The same principle is applied for transactions - only those between residents and non-residents are recorded. In the debt tables the BNB records the amount of tranches actually disbursed, not contingent.

The stock of the liabilities is recorded at nominal, not market value even in the case when they are in the form of tradable securities. The Gross External Debt of Bulgaria is reported in EUR.

The distinction between short-term and long-term debt is based on the original, not residual maturity of the liability. The long-term debt<sup>5</sup> includes all liabilities with original maturity of more than a year as well as liabilities related to direct investment, and the short-term - those with original maturity of one year or less. All arrears of principals and interests are recorded as short-term debt.

---

<sup>1</sup> Last updated: June 23<sup>th</sup>, 2011.

<sup>2</sup> *External Debt Statistics: Guide for Compilers and Users*, IMF, 2003, (Bank for International Settlements, The Commonwealth Secretariat, Eurostat, International Monetary Fund, Organisation for Economic Co-operation and Development, The Paris Club Secretariat, The United Nations Conference on Trade and Development, the World Bank)

<sup>3</sup> *External Debt Statistics: Guide for Compilers and Users*, Chapter Two, para 2.3.

<sup>4</sup> For a definition of resident and nonresident see the "*Balance of Payments Manual*", IMF, 5-th edition, para 57-58.

<sup>5</sup> In compliance with the recommendations of EXTERNAL DEBT STATISTICS, Guide for Compilers and Users, IMF 2003, p.3.14 and 7.5 direct investment liabilities are included in the long-term external debt.

## II. GROSS EXTERNAL DEBT COMPONENTS

### A. By institutional sectors:

The structure of the gross external debt table by institutional sectors is in compliance with the requirements of the "*External Debt Statistics: Guide for Compilers and Users, 2003*"<sup>6</sup>, prepared by several international organizations and published by the IMF.

The main components of the gross external debt tables classified by sectors are General Government, Monetary Authorities, Banks and Other Sectors. In accordance with the international statistical standards, debt liabilities related to direct investment (intercompany lending) are presented separately. The classification by institutional sectors is in compliance with the Fifth edition of the *Balance of Payments Manual (1993)*. Within the sectors the external debt liabilities are classified by maturity – short-term and long-term and by instruments.

### General Government

*General Government* debt includes: (1) central government debt, (2) local government debt, (3) debt of social security funds and (4) debt of all nonmarket nonprofit institutions that are controlled and mainly financed by government units. Public corporations and unincorporated enterprises that function as if they were corporations (so called quasi-corporations) are explicitly excluded from the general government sector and are allocated to banks or other sectors as appropriate. The debt liabilities of the *General Government* sector are long-term and are classified by instruments – *Loans* and *Bonds and Notes*. Liabilities for which no issue of tradable securities is involved are recorded under *Loans*. Loans received by the central government from the IMF are also recorded under *Loans*. The central government liabilities on securities issued on the international markets are recorded under *Bonds and Notes*, as the item comprises the entire stock of the issue. The part of the issue, held by residents at the end of the reporting period, is recorded with a negative sign in item *Bonds and Notes, held by residents*. The net decrease in the stock of Brady bonds, Eurobonds and Global bonds, held by residents corresponds to a net increase in the holdings of non-residents and is reported in the Disbursements table, and vice versa – in the tables on external debt service, as a principal payment under the *Bonds and Notes, held by residents* sub-item.

The government securities, issued by the government on the domestic market and purchased by non-residents, are also recorded under item *Bonds and Notes*.

Data sources: The main source of data is the *Register of Government and Government-guaranteed Debt* of the Ministry of Finance (before 31.12.2002 the source of that data was the *System for Debt Registration, Service and Management* of the Ministry of Finance and the Bulgarian National Bank). Other sources are Government and Government Guaranteed Debts Depository Directorate with the BNB, the Central Depository and the banks.

---

<sup>6</sup> *External Debt Statistics: Guide for Compilers and Users*, IMF, 2003 (Bank for International Settlements, The Commonwealth Secretariat, Eurostat, International Monetary Fund, Organisation for Economic Co-operation and Development, The Paris Club Secretariat, The United Nations Conference on Trade and Development, the World Bank)

### **Monetary Authorities**

In accordance with the international methodology on external debt statistics included herein are the external liabilities of the BNB. The data is derived from the *Register of Government and Government-guaranteed Debt* of the Ministry of Finance.

### **Banks**

Short-term liabilities of the banks include short-term loans, non-residents' deposits with domestic banks as well as other payables to non-residents. In sub-item *Deposits* are included deposits in foreign currencies and in leva of non-residents with domestic banks. The net increase in deposits in the banking system is reported in the Disbursements table, and the net deposit withdrawal – in the tables on external debt service, as a principal payment under the *Deposits* sub-item. In accordance with the *External Debt Statistics: Guide for Compilers and Users*, deposits related to contingent liabilities are excluded<sup>7</sup>. Long-term liabilities include loans and bonds and notes issued by the banks and held by non-residents.

Data sources: Data on the amount and transactions on external loans is received monthly directly from the banks through a statistical form on their external liabilities. Money and Banking Statistics Division with the Statistics Directorate of the BNB provides monthly data for the *Deposits* and *Other liabilities* items. Source for the data on *Bonds and Notes* item is the Central Depository.

### **Other Sectors**

In the *Other sectors* item the debt of private and state-owned non-bank enterprises (incl. Government guaranteed debt) as well as external liabilities of the households are recorded.

Short-term liabilities of the *Other sectors* include short-term loans, trade credits as well as other payables to non-residents. Long-term liabilities include loans and bonds and notes issued by the companies and held by non-residents.

Data sources: Data on financial loans is collected through the statistical *Form SPB-4 Report on the Financial Credit Liabilities of Residents to Non-residents*, that covers data on the stock and the various types of transactions on the credits. As the Foreign Exchange Law envisages quarterly reporting of these liabilities, for the first two months of each quarter the BNB publishes estimations on the non-bank enterprises, based on the debt service schedules provided by companies on the loans extended to them and on estimations. Under the *Trade credits* sub-item are recorded the respective liabilities of residents to non-residents<sup>8</sup> excluding trade credit liabilities towards foreign direct investors. Such data are collected from the BNB through *Form SPB-6B Report on the liabilities of local bodies to non-residents*. As the Foreign Exchange Law envisages quarterly reporting of these liabilities, for the first two months of each quarter the BNB publishes estimations for the stock of trade credits. Data on liabilities of the households is collected through the annual statistical *Form SPB-8 Report on the Assets and Liabilities of Resident Physical Persons to Non-residents*.

---

<sup>7</sup> "External Debt Statistics: Guide for Compilers and Users, IMF 2003, para 2.10

<sup>8</sup> For a definition of trade credits, see "Balance of Payments Manual", IMF, 5-th edition, 1993, chapter XX, para. 414, as well as "External Debt statistics: Guide for Compilers and Users", Chapter Three, para.133.

### **Direct investment: Intercompany lending**

In accordance with the international methodology on external debt statistics a distinction is made between liabilities owed to direct investors<sup>9</sup> (*Intecompany Lending*) and such owed to other creditors. Liabilities related to direct investment relationship are separately identified (equity liabilities arising from direct investment i.e. equity capital and reinvested earnings except nonparticipating, preferred shares are excluded from external debt). Liabilities related to direct investment are treated as a long-term debt.

#### **B. By creditors**

In accordance with the structure recommended by the *External Debt Statistics: Guide for Compilers and Users* quarterly external debt stock tables by creditor sectors are prepared and published.

#### **C. Public and Publicly Guaranteed External Debt and Private Non-Guaranteed External Debt**

In accordance with para. 5.5-5.6 of the *External Debt Statistics: Guide for Compilers and Users, IMF 2003*, the public and publicly guaranteed external debt comprises of the debt of sector General Government, sector Monetary Authorities, the public banks, the public non-financial enterprises, as well as of the government guaranteed debt of the private sector. The private non-guaranteed external debt comprises of the banks' and non-financial enterprises' debt, which is not included in the public and publicly guaranteed external debt. The data are monthly.

### **III. PERIODICITY, FREQUENCY AND TIMELINESS OF THE GROSS EXTERNAL DEBT PUBLICATIONS**

The Bulgarian National Bank compiles and publishes data on the stock of the gross external debt of the country, the debt service payments and the disbursements on a monthly basis. The external sector debt indicators, including external debt indicators, are also disseminated monthly.

The Bulgarian National Bank publishes the data according to its advance release calendar. In the case of a change, the BNB informs the users on the new release date at least a week before the advance date.

### **IV. DATA REVISION POLICY**

The data revisions policy of the Bulgarian National Bank is based on the following principles:

(i) Each monthly publication includes revisions of the data for the previous three months, and each quarterly publication includes revisions of the monthly data for the whole current year.

(ii) When on-going changes are made due to additional information collected, as well as resulting from elimination of errors, the Bulgarian National Bank timely informs the users through the monthly press releases, as well as through the notes at the end of the external debt tables.

---

<sup>9</sup> The BNB follows the international definition of direct investment according to which the acquisition of 10% or more of the voting power in the investment enterprise is considered to establish a direct investment relationship.



(iii) When significant revisions are made due to changes in the methodology for reporting of certain external debt components or for other reasons, the Bulgarian National Bank publishes in advance information on the changes, in order to facilitate the users of the data.

#### **V. DATA DISSEMINATION**

The Bulgarian National Bank publishes the monthly gross external debt data on the web site of the Bulgarian National Bank – <http://www.bnb.bg>. The data are published also in the BNB Monthly Bulletin and in the semi-annual and in the annual official reports of the Bulgarian National Bank. Data are simultaneously released to all interested parties.

#### **VI. CONTACTS**

If you have any questions on the methodology applied by the Bulgarian National Bank or on the gross external debt data published, please do not hesitate to contact Mr. Emil Dimitrov, director of the Statistics Directorate, via e-mail at [Dimitrov.E@bnbank.org](mailto:Dimitrov.E@bnbank.org), and Mrs. Liliana Bancheva, head of the Balance of Payments and External Debt Division, via e-mail at [Bancheva.L@bnbank.org](mailto:Bancheva.L@bnbank.org), or by mail to the following address:

Bulgarian National Bank  
Balance of Payments and External Debt Division  
1 “Knyaz Alexander I” Square  
1000 Sofia  
BULGARIA



# INTERNATIONAL INVESTMENT POSITION

INTERNATIONAL INVESTMENT POSITION  
OF BULGARIA

|   | EUR million     |                  |                  |                  |                  |                  |                  |                  |                  |                  |                  |                  |                  |                  |
|---|-----------------|------------------|------------------|------------------|------------------|------------------|------------------|------------------|------------------|------------------|------------------|------------------|------------------|------------------|
|   | XII.2004        | XII.2005         | XII.2006         | XII.2007         | XII.2008         | III.2009         | VI.2009          | IX.2009          | XII.2009         | III.2010         | VI.2010          | IX.2010          | XII.2010         | III.2011         |
| <b>International Investment Position, net<sup>1</sup></b> | <b>-5 476.0</b> | <b>-10 257.8</b> | <b>-15 349.7</b> | <b>-24 965.5</b> | <b>-34 559.3</b> | <b>-36 088.8</b> | <b>-36 567.1</b> | <b>-35 830.4</b> | <b>-35 578.9</b> | <b>-35 999.2</b> | <b>-36 146.0</b> | <b>-35 204.6</b> | <b>-35 184.8</b> | <b>-34 931.7</b> |
| <b>Assets</b>   | <b>12 147.5</b> | <b>13 272.8</b>  | <b>17 485.8</b>  | <b>19 796.7</b>  | <b>21 248.4</b>  | <b>20 403.2</b>  | <b>20 632.5</b>  | <b>21 424.5</b>  | <b>22 266.9</b>  | <b>21 706.1</b>  | <b>21 755.3</b>  | <b>22 538.3</b>  | <b>23 069.1</b>  | <b>23 084.5</b>  |
| Direct investment abroad <sup>2</sup>                     | -129.0          | 104.7            | 344.2            | 552.4            | 1 033.7          | 1 060.0          | 1 067.5          | 1 106.8          | 936.5            | 978.4            | 1 041.3          | 1 053.0          | 1 112.3          | 1 106.2          |
| Equity capital and reinvested earnings                    | 62.4            | 102.4            | 282.3            | 465.4            | 990.7            | 1 007.5          | 1 017.0          | 1 041.4          | 851.7            | 884.5            | 901.1            | 915.9            | 964.7            | 955.9            |
| Other capital   | -191.5          | 2.3              | 61.9             | 87.0             | 43.0             | 52.5             | 50.5             | 65.5             | 84.8             | 93.9             | 140.2            | 137.1            | 147.5            | 150.3            |
| Portfolio investment <sup>3</sup>                         | 664.1           | 670.1            | 949.4            | 1 047.2          | 1 117.8          | 1 567.9          | 1 657.8          | 1 724.9          | 1 807.9          | 2 006.5          | 2 191.2          | 2 320.8          | 2 664.3          | 2 615.5          |
| Equity securities   | 14.2            | 19.6             | 126.7            | 279.0            | 128.8            | 146.7            | 196.1            | 258.2            | 335.3            | 431.3            | 443.9            | 516.7            | 651.5            | 560.1            |
| Debt securities   | 649.9           | 650.5            | 822.7            | 768.2            | 989.0            | 1 421.2          | 1 461.7          | 1 466.7          | 1 472.6          | 1 575.2          | 1 747.3          | 1 804.1          | 2 012.8          | 2 055.4          |
| Bonds and notes   | 518.6           | 501.5            | 732.2            | 716.7            | 852.3            | 1 200.7          | 1 281.5          | 1 293.4          | 1 290.4          | 1 377.7          | 1 493.4          | 1 532.1          | 1 678.7          | 1 676.0          |
| Money-market instruments                                  | 131.3           | 149.0            | 90.5             | 51.5             | 136.7            | 220.5            | 180.2            | 173.3            | 182.2            | 197.4            | 253.9            | 272.0            | 334.1            | 379.5            |
| Financial derivatives                                     | 71.7            | 24.3             | 201.9            | 103.2            | 91.8             | 65.5             | 29.9             | 32.7             | 27.5             | 38.0             | 33.0             | 31.1             | 23.2             | 25.5             |
| Other investment  | 4 686.6         | 5 103.4          | 7 064.0          | 6 157.2          | 6 292.0          | 5 893.4          | 5 981.9          | 6 167.3          | 6 578.2          | 6 444.3          | 6 334.9          | 6 369.3          | 6 292.6          | 7 128.4          |
| Trade credits <sup>4</sup>                                | 341.0           | 438.2            | 554.7            | 634.1            | 781.6            | 853.6            | 844.1            | 847.9            | 880.6            | 757.2            | 828.2            | 889.5            | 889.5            | 889.5            |
| Loans <sup>5</sup>  | 94.8            | 163.4            | 290.5            | 432.4            | 674.5            | 679.2            | 674.6            | 693.0            | 646.3            | 655.9            | 694.2            | 745.9            | 774.4            | 805.2            |
| Monetary authorities                                      | 0.0             | 0.0              | 0.0              | 0.0              | 0.0              | 0.0              | 0.0              | 0.0              | 0.0              | 0.0              | 0.0              | 0.0              | 0.0              | 0.0              |
| General government  | 0.0             | 0.0              | 0.0              | 0.0              | 0.0              | 0.0              | 0.0              | 0.0              | 0.0              | 0.0              | 0.0              | 0.0              | 0.0              | 0.0              |
| Banks   | 78.2            | 121.0            | 132.8            | 225.5            | 300.9            | 294.8            | 277.1            | 276.2            | 275.6            | 280.6            | 288.8            | 336.5            | 344.9            | 373.9            |
| Other sectors   | 16.6            | 42.4             | 157.7            | 206.9            | 373.6            | 384.4            | 397.5            | 416.8            | 370.7            | 375.3            | 405.4            | 409.4            | 429.6            | 431.8            |
| Currency and deposits <sup>6</sup>                        | 2 034.5         | 2 575.3          | 4 554.5          | 4 454.0          | 4 172.7          | 3 994.4          | 4 086.4          | 4 278.4          | 4 701.3          | 4 665.2          | 4 395.7          | 4 406.0          | 4 287.2          | 5 080.8          |
| Other assets  | 2 216.2         | 1 926.5          | 1 664.2          | 636.7            | 663.1            | 366.2            | 376.8            | 348.0            | 350.0            | 366.0            | 416.8            | 327.9            | 341.5            | 353.0            |
| Monetary authorities                                      | 11.8            | 11.4             | 12.1             | 0.0              | 0.0              | 0.0              | 0.0              | 0.0              | 0.0              | 0.0              | 0.0              | 0.0              | 0.0              | 0.0              |
| General government  | 2 176.9         | 1 869.8          | 1 630.7          | 516.9            | 526.5            | 271.2            | 256.1            | 248.7            | 253.3            | 270.5            | 313.4            | 225.2            | 230.7            | 219.3            |
| Banks   | 27.6            | 45.3             | 21.4             | 119.8            | 136.6            | 95.0             | 120.8            | 99.3             | 96.7             | 95.5             | 103.3            | 102.7            | 110.8            | 133.7            |
| Other sectors   | 0.0             | 0.0              | 0.0              | 0.0              | 0.0              | 0.0              | 0.0              | 0.0              | 0.0              | 0.0              | 0.0              | 0.0              | 0.0              | 0.0              |
| Reserve assets <sup>7</sup>                               | 6 854.2         | 7 370.3          | 8 926.4          | 11 936.6         | 12 713.1         | 11 816.5         | 11 895.4         | 12 392.7         | 12 918.9         | 12 239.0         | 12 154.9         | 12 764.2         | 12 976.7         | 12 208.8         |
| <b>Liabilities</b>  | <b>17 623.5</b> | <b>23 530.6</b>  | <b>32 835.5</b>  | <b>44 762.2</b>  | <b>55 807.7</b>  | <b>56 492.0</b>  | <b>57 199.6</b>  | <b>57 254.9</b>  | <b>57 847.8</b>  | <b>57 705.3</b>  | <b>57 901.2</b>  | <b>57 742.9</b>  | <b>58 254.0</b>  | <b>58 016.2</b>  |
| Direct investment in Bulgaria <sup>2</sup>                | 7 420.7         | 11 756.5         | 17 830.4         | 25 769.7         | 31 610.8         | 32 998.7         | 33 572.9         | 33 848.3         | 34 140.8         | 34 646.5         | 35 136.1         | 35 474.2         | 35 901.1         | 35 956.8         |
| Equity capital and reinvested earnings                    | 5 818.0         | 7 919.5          | 11 890.1         | 15 751.0         | 18 983.9         | 20 042.3         | 20 489.3         | 20 796.1         | 20 679.3         | 21 417.3         | 21 756.4         | 22 321.7         | 22 806.9         | 23 050.8         |
| Other capital   | 1 602.7         | 3 837.0          | 5 940.3          | 10 018.7         | 12 626.8         | 12 956.3         | 13 083.6         | 13 052.2         | 13 461.5         | 13 229.2         | 13 379.7         | 13 152.5         | 13 094.1         | 12 906.0         |
| Portfolio investment <sup>8</sup>                         | 2 426.9         | 2 243.5          | 2 749.4          | 2 381.6          | 1 805.8          | 1 777.8          | 1 658.8          | 1 677.7          | 1 749.2          | 1 732.9          | 1 663.0          | 1 611.4          | 1 655.0          | 1 540.7          |
| Equity securities   | 213.3           | 372.7            | 512.6            | 693.2            | 504.6            | 484.8            | 476.0            | 467.3            | 466.1            | 439.2            | 413.7            | 412.6            | 412.6            | 434.1            |
| Debt securities   | 2 213.6         | 1 870.8          | 2 236.8          | 1 688.4          | 1 301.2          | 1 293.0          | 1 182.8          | 1 210.3          | 1 283.1          | 1 293.7          | 1 249.3          | 1 198.7          | 1 242.4          | 1 106.6          |
| Bonds and notes   | 2 213.6         | 1 870.8          | 2 057.8          | 1 688.4          | 1 301.2          | 1 293.0          | 1 182.8          | 1 210.3          | 1 283.1          | 1 293.7          | 1 249.3          | 1 198.7          | 1 242.4          | 1 106.6          |
| Money-market instruments                                  | 0.0             | 0.0              | 179.0            | 0.0              | 0.0              | 0.0              | 0.0              | 0.0              | 0.0              | 0.0              | 0.0              | 0.0              | 0.0              | 0.0              |
| Financial derivatives <sup>8</sup>                        | 158.7           | 32.7             | 63.9             | 33.9             | 55.2             | 72.9             | 72.2             | 71.8             | 31.1             | 8.9              | 10.6             | 8.1              | 8.5              | 11.6             |
| Other investment  | 7 617.1         | 9 487.9          | 12 191.8         | 16 576.9         | 22 336.0         | 21 642.6         | 21 895.7         | 21 657.2         | 21 926.7         | 21 317.0         | 21 091.5         | 20 649.2         | 20 689.5         | 20 507.1         |
| Trade credits <sup>9</sup>                                | 799.0           | 1 069.8          | 1 437.0          | 1 586.0          | 1 755.6          | 1 626.6          | 1 538.4          | 1 557.1          | 1 614.6          | 1 443.2          | 1 501.8          | 1 353.9          | 1 353.9          | 1 353.9          |
| Loans   | 5 752.5         | 6 927.8          | 8 738.5          | 10 947.4         | 14 499.3         | 14 223.6         | 14 544.0         | 14 444.4         | 14 895.5         | 14 746.0         | 14 706.3         | 14 056.4         | 14 511.1         | 14 818.5         |
| Monetary authorities <sup>10</sup>                        | 868.7           | 559.5            | 258.9            | 0.0              | 0.0              | 0.0              | 0.0              | 0.0              | 0.0              | 0.0              | 0.0              | 0.0              | 0.0              | 0.0              |
| General government <sup>11</sup>                          | 2 099.1         | 2 168.6          | 1 838.8          | 1 852.3          | 1 558.4          | 1 574.0          | 1 804.4          | 1 785.0          | 1 806.1          | 1 824.4          | 1 853.2          | 1 798.8          | 1 869.4          | 1 868.5          |
| Banks <sup>12</sup>                                       | 574.4           | 1 070.2          | 1 391.5          | 1 594.9          | 2 946.7          | 2 557.1          | 2 534.1          | 2 440.7          | 2 922.5          | 2 706.3          | 2 349.4          | 1 823.5          | 1 999.1          | 2 088.2          |
| Other sectors <sup>13</sup>                               | 2 210.2         | 3 129.5          | 5 249.3          | 7 500.2          | 9 994.1          | 10 092.6         | 10 205.4         | 10 218.7         | 10 166.9         | 10 215.4         | 10 503.8         | 10 434.1         | 10 642.6         | 10 861.8         |
| Currency and deposits <sup>14</sup>                       | 998.9           | 1 396.6          | 1 900.1          | 3 919.9          | 5 974.6          | 5 738.8          | 5 753.4          | 5 601.9          | 5 384.8          | 5 085.4          | 4 833.5          | 5 169.4          | 4 762.4          | 4 262.5          |

|                      | XII.2004 | XII.2005 | XII.2006 | XII.2007 | XII.2008 | III.2009 | VI.2009 | IX.2009 | XII.2009 | III.2010 | VI.2010 | IX.2010 | XII.2010 | III.2011 |
|----------------------|----------|----------|----------|----------|----------|----------|---------|---------|----------|----------|---------|---------|----------|----------|
| Other liabilities    | 66.6     | 103.6    | 116.2    | 123.6    | 106.5    | 53.5     | 59.9    | 53.8    | 31.7     | 42.5     | 49.9    | 69.5    | 62.0     | 72.2     |
| Monetary authorities | 0.0      | 0.0      | 0.0      | 0.0      | 0.0      | 0.0      | 0.0     | 0.0     | 0.0      | 0.0      | 0.0     | 0.0     | 0.0      | 0.0      |
| General government   | 0.3      | 0.4      | 0.4      | 0.1      | 0.3      | 0.2      | 0.1     | 0.1     | 0.1      | 0.2      | 0.2     | 0.2     | 0.2      | 0.1      |
| Banks                | 66.3     | 103.2    | 115.9    | 123.5    | 106.2    | 53.4     | 59.8    | 53.7    | 31.6     | 42.3     | 49.7    | 69.4    | 61.9     | 72.0     |
| Other sectors        | 0.0      | 0.0      | 0.0      | 0.0      | 0.0      | 0.0      | 0.0     | 0.0     | 0.0      | 0.0      | 0.0     | 0.0     | 0.0      | 0.0      |

<sup>1</sup> Preliminary data. The Euro equivalent is calculated using end-of-period exchange rates of the respective foreign currencies.

With Q2 2011 data the international investment position for Q1 2008 - Q1 2011 will be revised.

<sup>2</sup> Information on the compilation of foreign direct investment stocks to be found in "Methodological notes on the compilation of international investment position of Bulgaria" published on the BNB web-site - [www.bnb.bg](http://www.bnb.bg).

<sup>3</sup> Portfolio investments in securities issued by non-residents and held by residents. Sources: banks and non-bank investment intermediaries and other financial institutions.  
<sup>4</sup> From 2004 onwards data on trade credits-assets (prepaid advances and receivables from suppliers), reported to the BNB are included.  
Due to quarterly reporting data are subject to revisions.

<sup>5</sup> Data are based on the reports by banks and companies on financial credits lent to non-residents. Due to quarterly reporting data are subject to revisions.

<sup>6</sup> Source: BIS International Banking Statistics. For Q1 2011 the last published data (for December 2010) are used.

<sup>7</sup> Including monetary and non-monetary gold. Source: Issue Department.

<sup>8</sup> Source: Central Depository AD.

<sup>9</sup> Data on trade credits-liabilities (received advances and payables to suppliers), reported to the BNB are included in this item.  
Due to quarterly reporting data are subject to revisions.

<sup>10</sup> Use of Fund credit.

<sup>11</sup> Data source: The Register of Government and Government-guaranteed Debt of the Ministry of Finance. Preliminary data for Q1 2011 as of April 21, 2011.

Debt liabilities of the public companies and the government-guaranteed debt are excluded.

<sup>12</sup> Data are based on the monthly reports by banks.

<sup>13</sup> Data source: Local individuals and legal entities (incl. state owned companies and government guaranteed loans from the Register of Government and Government-guaranteed Debt of the Ministry of Finance.). Intracompany loans are excluded. Due to quarterly reporting data are subject to revisions.

<sup>14</sup> Data source: commercial banks (incl. private and state commercial banks). Deposits related to contingent liabilities are excluded.



## METHODOLOGICAL NOTES ON THE COMPILATION OF THE INTERNATIONAL INVESTMENT POSITION OF BULGARIA

The Bulgarian National Bank is in charge of the compilation of the *International Investment Position* (i.i.p.) of the country. The data for the purposes of the i.i.p. compilation are collected on the basis of Article 42 of the Law on the Bulgarian National Bank as well as on the basis of the Foreign Exchange Law. These data are processed by the “Balance of Payments and External Debt” Division within the Statistics Directorate of the BNB, respective of the confidentiality rules. The i.i.p. statement is compiled in general conformity with the international standards prescribed by the *Fifth Edition* of the “*Balance of Payments Manual*” (IMF, 1993) and the “*International Investment Position – A Guide to Data Sources*” (IMF, 2002) and the “*Guideline of The European Central Bank*” (ECB/2004/15)<sup>1</sup>. The i.i.p. statement is compiled and published quarterly.

There is a close relationship between the *International Investment Position* and the balance of payments (BoP). The BoP financial account measures economy's transactions in external financial assets and liabilities, which affect the stock of external financial assets and liabilities measured in the international investment position.

The international investment position methodology is conceptually related to that of the *Gross External Debt* and the *System of National Accounts (SNA)*.

### I. ACCOUNTING PRINCIPLES AND CONVENTIONS

Stocks' valuations are based on market prices. If the actual market prices are not available, the average market prices are used as an approximation.

Valuation changes of the country's external assets and liabilities are included in the international investment position.

The units of account for the international investment position of Bulgaria are the EUR and the BGN. The conversion into the unit of account is made using the exchange rate at the end of the reporting period.

### II. INTERNATIONAL INVESTMENT POSITION COMPONENTS

The i.i.p. is the balance sheet of the country's stocks of external financial assets and liabilities at the end of a specific period. The external financial assets consist of direct investment, portfolio investment, financial derivatives, other investment and reserve assets. The external financial liabilities consist of direct investment, portfolio investment, financial derivatives and other investment and, therefore, they are a broader concept than the liabilities that constitute the country's gross external debt. The primary type of classification in the i.i.p. statement is the distinction between assets and liabilities. The second level of classification by function is fully consistent with the b.o.p. financial account. The functional types of assets and liabilities are (i) direct investment, (ii) portfolio investment, (iii) financial derivatives and (iv) other investment. Included in assets are also the reserve assets held by the monetary authorities. The third level of classification is by investment instrument. Instruments

---

<sup>1</sup> Guideline of The European Central Bank on the Statistical Reporting Requirements of The European Central Bank in the Field of Balance of Payments Statistics, The International Reserves Template and International Investment Position Statistics (ECB/2004/15)

recorded as portfolio investment and other investment are further sub-divided by domestic sector, while the components of other investment are also cross-classified by original maturity.

#### **A. DIRECT INVESTMENT**

*Direct investment* is a category of international investment in which a resident of one economy – a direct investor – holds a lasting interest (at least 10% of the ordinary shares or voting power) in an enterprise resident in another economy – a direct investment enterprise. The direct investment includes both the initial transaction, through which the relationship between the direct investor and the direct investment enterprise is established, and all subsequent transactions between them. The direct investment covers transactions related to changes in the direct investor's share in the equity capital of the direct investment enterprise, inter-company debt transactions as well as the share of the direct investor in the undistributed earnings/loss of the direct investment enterprise. Claims on and Liabilities to affiliated enterprises are shown separately, following the directional principle.

Sources and methods: The information on the FDI stocks is derived from monthly, quarterly and annual reports of the financial and the non-financial sector. For particular elements of the FDI position available stock data are used. Other elements of the FDI position for which BNB has no data on stocks available are estimated as accumulation of b.o.p. flows to stocks at the end of previous reporting period. .

For data on direct investments abroad the Bulgarian National Bank uses the information from declaration forms on direct investment abroad, quarterly reports of non-financial sector enterprises and monthly reports on international transactions of the banks. Later, the stocks of Bulgarian direct investment abroad are updated with data from an annual survey conducted by the BNB.

The Bulgarian National Bank receives monthly data on direct investments in the country from the Central Depository, from the banks' reports on international transactions, from the Notary Public and from the Privatisation Agency; quarterly data – from Banking Supervision Department – reports on capital and income of foreign owned banks, from the reports on inter-company debt of direct investment enterprises and data from the Bulgarian National Bank surveys regarding major non-financial FDI enterprises. The direct investment equity stocks in Bulgaria for the non-financial sector derived from b.o.p. flows are supplemented or replaced with the data provided by the NSI's annual survey on FDI stocks. The Bulgarian National Bank compiles data with geographical and economic breakdown for both FDI in Bulgaria and abroad.

#### **B. PORTFOLIO INVESTMENT**

*Portfolio investment* stocks comprise holdings of and liabilities on equity securities and debt securities; the latter are subdivided into bonds and notes (with an original maturity of one year or more) and money market instruments (with an original maturity of less than one year).

Sources and methods:

The portfolio investment assets of the monetary authorities and the general government уџџџџ do not constitute a part of the reserve assets and are compiled on the basis of information provided by the Accounting Department of the Bulgarian National Bank and by the Ministry of Finance.



The banks' holdings of securities are compiled on the basis of reporting forms, containing balance sheet data, while the other sectors' portfolio investment assets are reported by the custodians.

The stocks of portfolio investment liabilities cover securities issued by residents and held by non-residents. The main source of information on the portfolio investment liabilities in equity and debt securities are (i) the Central Depository which provides monthly stocks information on the portfolio investment by sector and (ii) the banks reports on the Bulgarian securities issued abroad and held by residents. The Ministry of Finance, the Bulgarian National Bank and the commercial banks are the main sources of stock information on the portfolio investment liabilities in debt securities of the monetary authorities and the general government.

### **C. FINANCIAL DERIVATIVES**

Assets and liabilities in *financial derivatives* cover financial derivative instruments such as forwards, futures, swaps, options, etc.

The main source of information are the banks.

### **D. OTHER INVESTMENT**

*Other investment* covers the stocks of assets and liabilities related to short and long-term trade credits and loans, currency and deposits and other assets and liabilities (accounts receivable and payable).

According to the BPM5, *trade credits* consist of claims and liabilities arising from the direct extension of credit by suppliers and buyers for transactions in goods and services and advance payments for work in progress (or to be undertaken) that is associated with such transactions. *Loans* item includes received and paid principals on short- and long-term loans between residents and non-residents if no issue of a tradable security is involved with these loans. The *Currency and Deposits* component presents on the assets side the changes in the residents' deposits held abroad, and on the liabilities side – the changes in the liabilities of the resident banks to non-residents in domestic and foreign currency. Items *Other assets* and *Other liabilities* includes all transactions on miscellaneous accounts receivable and payable not included elsewhere and transactions in arrears.

Sources and methods: The sources of information for trade credits are: quarterly Form SPB-6A for the assets, and quarterly Form SPB-6B for trade credits liabilities, reported by the non-financial sector.

Stocks data on the item *Loans* is received by the Ministry of Finance, the Bulgarian National Bank, the banks and directly by the enterprises that have lent to or borrowed from abroad.

### **E. Reserves and related items**

According to the BPM5, *reserve assets* consist of those external assets that are readily available to and controlled by monetary authorities for direct financing of payments imbalances and/or for other purposes. The reserve assets comprise monetary gold, SDRs, the reserve position in the Fund, foreign exchange assets (consisting of currency and deposits and securities) and other claims.

Under the provisions of the currency board, the *reserve assets* of the Bulgarian National Bank are equal to the assets of the Issue Department as presented in its balance sheet.

### **III. PERIODICITY, FREQUENCY AND TIMELINESS OF THE INTERNATIONAL INVESTMENT POSITION PUBLICATIONS**

The Bulgarian National Bank compiles and publishes the international investment position of the country on a quarterly basis. According to the schedule of the Bulgarian National Bank the data are published within three months after the close of the reference quarter.

### **IV. DATA REVISION POLICY**

The policy on revisions pursued by the Bulgarian National Bank is based on the following principles:

- (i) Each publication includes revisions of the data for the previous reporting period.
- (ii) When on-going changes are made due to additional information collected, as well as resulting from elimination of errors, the Bulgarian National Bank timely informs the users through the monthly press releases.
- (iii) When significant revisions are made due to changes in the methodology for reporting of certain i.i.p. components or other reasons, the Bulgarian National Bank publishes in advance information on the changes to facilitate the users of the data. With the revisions publication, the users are timely acquainted with the revised data on the relative items.

### **V. DATA DISSEMINATION**

The Bulgarian National Bank disseminates the quarterly international investment position data on its web site – <http://www.bnb.bg>.

The data are published also in the *Bulgarian National Bank Monthly Bulletin*.

Data on the international investment position of the country are included in the semi-annual and in the annual official reports of the Bulgarian National Bank.

### **VI. CONTACTS**

If you have any questions on the methodology applied by the Bulgarian National Bank or on the balance of payments data published, please do not hesitate to send them to Mr. Emil Dimitrov, director, Statistics Directorate, via e-mail at [Dimitrov.E@bnbank.org](mailto:Dimitrov.E@bnbank.org), to Mrs. Liliana Bancheva, head of the Balance of Payments and External Debt Division, via e-mail at [Bancheva.L@bnbank.org](mailto:Bancheva.L@bnbank.org), or by mail to the following address:

Bulgarian National Bank  
Balance of Payments and External Debt Division  
1 Knyaz Alexander I Square  
1000 Sofia  
BULGARIA

*Last updated on June 23, 2011*

**External Sector Statistics, Compiled by  
Balance of Payments and External Debt Division and Disseminated  
through the BNB web-site (<http://www.bnb.bg>), by Items: \***

**Press Releases**

Statistical Press Releases

**Balance of Payments**

[January - June 2011](#)

[Previous Press Releases](#)

**Gross External Debt**

[June 2011](#)

[Previous Press Releases](#)

**Research and Publications**

BNB Periodical Publications

Statistical Publications

**Balance of Payments of Bulgaria**

[January - June 2011](#)

[Previous Publications](#)

**Direct Investments**

[January - June 2011](#)

[Previous Publications](#)

**Gross External Debt of Bulgaria**

[June 2011](#)

[Previous Publications](#)

**Statistics**

Macroeconomic Indicators

**External Sector Indicators**

External Sector

Exchange Rates

**Real Effective Exchange Rates**

**Balance of Payments**

[Analytical Presentation \(monthly data in EUR million\)](#)

[Standard Presentation \(monthly data in EUR million\)](#)

**Foreign Trade**

**Exports**

End-Use

[Monthly Data](#)

[Quarterly Data](#)

[Annual Data](#)

Main Trade Partners and Regions (EUR million)

[Monthly Data](#)

[Quarterly Data](#)

[Annual Data](#)

Main Trade Regions by End-Use (EUR million)

[Quarterly Data 1995 - 2010](#)

Main Trade Regions by End-Use (EUR million)

[Annual Data 1995 - 2010](#)

**Imports**

End-Use

[Monthly Data](#)

[Quarterly Data](#)

[Annual Data](#)

Main Trade Partners and Regions (EUR million)

[Monthly Data](#)

[Quarterly Data](#)

[Annual Data](#)

\*As of August 23, 2011.

## Statistics

External Sector  
Foreign Trade  
*Imports (continued)*

Main Trade Regions by End-Use (EUR million)

[Quarterly Data 1995 - 2010](#)

Main Trade Regions by End-Use (EUR million)

[Annual Data 1995 - 2010](#)

## Statistics

External Sector (continued)

### International Investment Position (EUR million)

[Quarterly Data](#)

[Annual Data](#)

### Direct Investment

#### *In Bulgaria*

FDI flows by investment type - annual data

FDI flows by geographical region - annual data

FDI flows by economic activity - annual data

FDI flows by investment type - quarterly data

FDI flows by geographical region - quarterly data

FDI flows by economic activity - quarterly data

FDI flows by investment type - monthly data

FDI stock by investment type - annual data

FDI stock by geographical region - annual data

FDI stock by economic activity - annual data

FDI stock by investment type - quarterly data

#### **Abroad**

DI flows by investment type - annual data

DI flows by geographical region - annual data

DI flows by industry - annual data

DI flows by investment type - quarterly data

DI flows by geographical region - - quarterly data

DI flows by industry - - quarterly data

DI flows by investment type - monthly data

DI stock by investment type - annual data

DI stock by geographical region - annual data

DI stock by investment type - quarterly data

### Gross External Debt

Gross External Debt Stock by Sectors, 1999 - 2011

[\(monthly data in EUR million\)](#)

Gross External Debt Stock by Instruments, 1999 - 2011

[\(monthly data in EUR million\)](#)

Gross External Debt Stock by Creditors, 2004 - 2011

[\(quarterly data in EUR million\)](#)

Currency Structure of the Gross External Debt

Gross External Debt Stock of Other Sectors whit Geographical Structure, March 2004 - June 2011

[\(quarterly data in EUR million\)](#)

Gross External Debt Stock of Other Sectors whit Branch Structure, March 2004 - June 2011

[\(quarterly data in EUR million\)](#)

\*As of August 23, 2011.

## Statistics

External Sector

### Gross External Debt (continued)

Gross External Debt Service by Sectors, 2007 - 2011

[\(monthly data in EUR million\)](#)

Gross External Debt Service by Sectors, 2002 - 2006

[\(monthly data in EUR million\)](#)

Gross External Debt Service by Sectors, 1999 - 2001

[\(monthly data in EUR million\)](#)

Gross External Debt Disbursements by Sectors, 1999 - 2011

[\(monthly, quarterly and annual data in EUR million\)](#)

## Statistics

External Sector (continued)

### Template on International Reserves

Part I. Official Reserve Assets and Other Foreign Currency Assets

Part II. Predetermined short-term net drains on foreign currency assets (nominal value)

Part III. Contingent short-term net drains on foreign currency assets (nominal value)

Part IV. Memo items

## Statistics (continued)

Methodological Notes

### Balance of Payments

Standard and Analytic Concepts

Methodological Notes

Methodology for estimation of items „Travel“, “Passenger Transportation” and

“Compensation of Employees - credit” of the Balance of Payments of Bulgaria

Methodology for Estimation of Item Workers' Remittances, Credit

Methodology for Compilation of Imports at FOB Prices and Receipts and Payments Regarding the Freight Transportation for the Balance of Payments

Methodology for Estimation of Flows due to Unofficial Employment

### Foreign Trade

Methodological Notes

Message about the changes in the reporting of Foreign Trade (16 January 2007)

Announcement about the coverage and quality of the data on imports and exports for the period January - March 2007 (as of 18 May 2007)

### Real Effective Exchange Rate

Methodological Notes

### International Investment Position

Methodological Notes

### Direct Investments

Methodological Notes

### Gross External Debt

Methodological Notes

### Template on International Reserves and Foreign Currency Liquidity

Methodological Notes

## **Statistics (continued)**

### **Statistical Data Base**

Selection of Statistics

#### **Balance of Payments**

*Selection of:*

Frequency  
Data Type  
Counterpart Data  
Item  
Series Denominated

## **Statistics**

### **Statistical Data Base**

Selection of Statistics (continued)

#### **International Investment Position**

*Selection of:*

Frequency  
Data Type  
Counterpart Data  
Item  
Series Denominated

#### **Foreign Direct Investment in Bulgaria**

*Selection of:*

Frequency  
Counterpart Data  
Item  
Series Denominated  
Data Type  
Resident Economic Activity

#### **Direct Investment of Bulgaria Abroad**

*Selection of:*

Frequency  
Counterpart Data  
Item  
Series Denominated  
Data Type  
Resident Economic Activity

#### **Template on International Reserves and Foreign Currency Liquidity**

*Selection of:*

Frequency  
Item  
Series Denominated  
Data Type

#### **Real Effective Exchange Rate**

*Selection of:*

Frequency  
Deflator

\*As of August 23, 2011.