



DISCUSSION PAPERS

DP/84/2011



Relative Inflation Dynamics in the EU Accession Countries of Central and Eastern Europe

Hiranya K Nath
Kiril Tochkov



BULGARIAN
NATIONAL
BANK



DISCUSSION PAPERS

DP/84/2011

BULGARIAN
NATIONAL
BANK

Relative Inflation Dynamics in the EU Accession Countries of Central and Eastern Europe

**Hiranya K Nath
Kiril Tochkov**

May 2011

DISCUSSION PAPERS

Editorial Board:

Chairman: Ass. Prof. Statty Stattev, Ph. D.

Members: Kalin Hristov

Tsvetan Manchev, Ph. D.

Ass. Prof. Mariella Nenova, Ph. D.

Ass. Prof. Pavlina Anachkova, Ph. D.

Andrey Vassilev, Ph. D.

Daniela Minkova, Ph. D.

Secretary: Lyudmila Dimova

© Hiranya K Nath, Kiril Tochkov, 2011

© Bulgarian National Bank, series, 2011

ISBN: 978-954-8579-42-1

Printed in the BNB Printing Centre.

Views expressed in materials are those of the authors and do not necessarily reflect BNB policy.

Elements of the 1999 banknote with a nominal value of 50 leva are used in cover design.

Send your comments and opinions to:

Publications Division

Bulgarian National Bank

1, Knyaz Alexander I Square

1000 Sofia, Bulgaria

Tel.: (+359 2) 9145 1351, 9145 1978

Fax: (+359 2) 980 2425

e-mail: Dimova.L@bnbank.org

Website: www.bnb.bg

Contents

1. Introduction	5
2. Data and Methodology	8
2.1 Data	8
2.2 Methodology	9
3. Empirical Results	13
4. Concluding Remarks	18
References	28

SUMMARY: Following their EU accession, the new member countries from Central and Eastern Europe (CEE) must achieve sustainable price stability as one of the pre-conditions for joining the euro area (EA) and adopting the euro. This paper examines the distribution dynamics of inflation rates in ten EU members from CEE relative to the EA accession benchmark inflation over the period 1990–2009. In contrast to previous studies, we use non-parametric methods to test for convergence in inflation rates between CEE and the EA benchmark as well as within the CEE sample. Over the entire sample period, we detect a general shift in the CEE inflation distribution towards the EA benchmark along with intradistributional convergence. However, this process is not uniform. In the early years, it was equally likely for CEE inflation rates to move towards or away from the benchmark. The resulting multimodal distribution gave way to a unimodal distribution in the years leading up to the EU accession, accompanied by a marked shift towards the EA benchmark. In more recent years, a bimodal distribution signaled the stratification of relative inflation in CEE into two convergence clubs, which has intensified since the start of the global economic crisis.

Key words: Inflation; Convergence; EU Accession Countries; Distribution Dynamics.
JEL Classifications: C14; E31; E42; P22.

Department of Economics & International Business, Sam Houston State University, Huntsville, TX 77341-2118; phone: 936-294-4760; fax: 936-294-3488; e-mail: eco_hkn@shsu.edu

Department of Economics, Texas Christian University, TCU Box 298510, Fort Worth, TX 76129; phone: (817) 257 7554; fax : (817) 257-5058; email: k.tochkov@tcu.edu

The authors would like to thank Mariella Nenova, Andrey Vassilev, and the members of the editorial board of the Bulgarian National Bank Discussion Papers for their helpful comments and suggestions.

1. Introduction

Inflation has been one of the key issues of economic transition in Central and Eastern Europe (CEE) over the past two decades. The early period of transition was marked by galloping inflation triggered by price liberalization and other structural reforms aimed at establishing a market economy. Although inflation was tamed by the second half of the 1990s, the start of accession negotiations between CEE countries and the European Union (EU), which coincided with the introduction of the euro in 1999, created new challenges. All new EU member states are obliged to eventually enter the third and final phase of the membership in the Economic and Monetary Union (EMU) and adopt the euro as their currency once they fulfill four convergence criteria stipulated in the Maastricht Treaty of 1992 and aimed at ensuring stability of the common European currency. One of these criteria requires the member state to achieve price stability by controlling the rate of inflation.¹ In particular, this criterion states that “a Member State has a price performance that is sustainable and an average rate of inflation, observed over a period of one year before the examination, that does not exceed by more than 1.5 percentage points that of, at most, the three best-performing Member States in terms of price stability.”²

Accordingly, as the CEE countries stood to join the EU, the prospect of accession to the euro area (EA) brought upon them the responsibility of achieving a low inflation not only in absolute terms but relative to the benchmark established by the Maastricht Treaty.³ The fact that only three of the ten EU accession countries of CEE have managed to fulfill all four criteria and adopt the euro so far illustrates the enormity of the challenge faced by these countries.⁴ One of the reasons for their failure to meet this criterion is that during the 2000s CEE countries recorded high growth rates, attracted foreign investment, and experienced a credit boom, all of which fueled inflation. The EA inflation benchmark based on inflation in mature economies of Western Europe appeared to be too low and rigid for many fast-growing CEE countries. Furthermore, the requirement of nominal convergence between

¹The other criteria include: sustainable fiscal position, exchange rate stability, and low long-term interest rates.

²Article 109j(1) of the Maastricht Treaty lays down the protocol on convergence criteria for entering the EMU. See p. 85 of the treaty text at http://www.ecb.int/ecb/legal/pdf/maastricht_en.pdf.

³The importance of the price stability criterion and the stringency in its implementation became apparent in 2006 when Lithuania’s bid to join the EMU was rejected although its inflation rate was just 0.1 percent point above the benchmark.

⁴Slovenia became the first CEE country to adopt the euro in 2007, followed by Slovakia in 2009, and Estonia in 2011.

EA members and accession countries makes it difficult for monetary authorities to fulfill the price stability and exchange rate stability criteria simultaneously. Consequently, monetary policy can either maintain a fixed exchange rate, risking a sustained inflation differential, or can target inflation but expect a nominal exchange rate appreciation (Buiter, 2004). Finally, the global economic crisis of 2008–2009 put the enlargement of the euro area on hold as budget deficits in CEE countries soared and inflation rates missed the EA benchmark.⁵

The goal of this paper is to investigate the evolution of inflation rates in ten EU accession countries of CEE relative to the EA benchmark over the period 1990–2009. In particular, we examine convergence of inflation in CEE towards the EA benchmark. We also study the dynamics of relative inflation within the group of these accession countries. This is important in itself because with greater economic integration under the umbrella of the EU, persistent differences in inflation among these countries will affect real interest rates and real wages, which in turn will influence the movements of capital and labor across borders. Previous studies on inflation convergence among CEE countries vary widely in terms of their scope and coverage. While the majority of these studies focuses on the period from the mid-1990s to the EU enlargement in 2004 (Brada et al., 2005; Kocenda et al., 2006; Kutan and Yigit, 2004), a few others also include the years up to the second enlargement in 2007 (Becker and Hall, 2009; Siklos, 2010). Our sample period extends over the two decades since the beginning of transition in 1990 and thus allows us to study relative inflation in CEE during the early transition period of hyperinflation, the periods before and after the two EU enlargements, the EA accession of Slovenia and Slovakia, as well as the period of the recent global economic crisis.

Most previous studies include the eight CEE countries that joined the EU in 2004. Only Becker and Hall (2009) and Kutan and Yigit (2004) include Bulgaria and Romania that joined the EU in 2007. However, their sample period prevents them from investigating relative inflation in the two countries following the EU accession. In many studies on inflation convergence, the EU member countries from CEE are lumped together with other accession countries such as Malta and Cyprus (Kocenda et al., 2006; Siklos, 2010) or candidate countries such as Croatia and Turkey (Becker and Hall, 2009) which are either quite different in size than the CEE countries, are not transition economies or do not have the prospect of being admitted to the EU

⁵Estonia introduced the euro in 2011 after managing to satisfy all four convergence criteria despite the fact that it was one of the most adversely affected EU countries by the global economic crisis.

anytime soon. Our sample comprises all ten EU member states from CEE that have been obliged to adopt the euro since joining the EU and therefore must eventually conform to the price stability criterion, as exemplified by Slovakia, Slovenia, and Estonia.

A crucial difference between the present study and the existing literature is the choice of methodology. Previous studies often use unit root tests to investigate the stationarity of the inflation differential series and cointegration tests to detect a common stochastic trend between EA and CEE inflation.⁶ In contrast, we employ distribution dynamics, a non-parametric methodology that allows us to explore the entire distribution of relative inflation rates rather than just the first two moments of the distribution and its dynamics over time. We analyze the shape of the distribution and its evolution over time in discrete and continuous space. In particular, we use Markov transition matrices and stochastic kernels to estimate the probability of making a transition from an initial level of relative inflation towards or away from the EA benchmark.

Furthermore, the benchmark against which CEE inflation rates are evaluated varies across studies. For those focusing on the convergence towards European standards, the most popular choices are the inflation rates of Germany, the EU or EA average, and the European Central Bank (ECB) target rate (Becker and Hall, 2009; Brada et al., 2005; Siklos, 2010) while those investigating convergence within the group of CEE accession countries opt for the CEE average or test for a common stochastic trend between different clusters of CEE countries (Becker and Hall, 2009; Kutan and Yigit, 2004). We adopt the EA benchmark mandated by the Maastricht Treaty as the only reference value of importance for the CEE accession countries as it is used to evaluate their readiness to join the euro area.⁷ However, while previous studies had to use multiple reference values to examine inflation convergence between CEE and EU/EA and among CEE countries, our methodology enables us to simultaneously detect and analyze 1) shifts of the distribution of CEE inflation rates relative to the EA benchmark, 2) intradistributional convergence, and 3) the stratification into different convergence clubs within CEE.

The few studies that focus on inflation convergence in CEE relative to the EA price stability criterion largely concur in their findings. Kocenda et al. (2006) report convergence over the late 1990s but show that as inflation

⁶Kocenda et al. (2006) and Becker and Hall (2009) are notable exceptions as they use β -convergence and the principal component analysis, respectively, to study inflation convergence in CEE.

⁷Becker and Hall (2009), Kocenda et al. (2006), and Siklos (2010) also use the EMU benchmark based on the price stability criterion, but it represents only a relatively minor part of their convergence analysis.

rates approached the EA benchmark in the early to mid-2000s, the downward movement came to a halt with very few exceptions, such as Slovenia. Similarly, Becker and Hall (2009) find evidence of convergence over the period 1998–2002 and they show that this trend continued only for Slovakia and Slovenia during 2003–2007 while for most others inflation veered away from the benchmark. Siklos (2010) finds evidence of convergence over the period 1995–2007 only for a few of the CEE accession countries, but his results are not robust across different model specifications.

The rest of the paper is organized as follows. The next section discusses the data and the methodology used in this paper. In section 3, we present the empirical results, and the concluding remarks are in section 4.

2. Data and Methodology

2.1 Data

We obtain annual data on consumer price index (CPI) inflation for the period 1990–2009 from the IMF's International Financial Statistics. The sample includes the eight CEE countries that joined the EU in 2004 as well as Bulgaria and Romania, which became EU members in 2007.⁸ While assessing whether a member state is ready to join the Euro area, the ECB focuses on inflation measures based on the Harmonized Indices of Consumer Prices (HICP) rather than on CPI inflation. Eurostat, the statistical office of the EU, calculates HICP using a unified methodology applied to all EU member states. In contrast, CPIs are reported by the respective national statistical agencies that might use slightly different definitions in certain instances. However, HICP data are available only since 1997 and, therefore, their use would significantly restrict our analysis of inflation dynamics, particularly during the early years of transition. Furthermore, the differences between the two measures have diminished over time as the national statistical agencies have adopted the HICP standards for their CPIs.⁹

Table 1 presents annual consumer price inflation rates in the ten accession countries during 1990–2009. We make the following observations. First, in the early stages of transition, almost all CEE countries experienced high and volatile inflation that reflects corrective price changes associated with sweeping price and trade liberalization as well as substantial exchange rate

⁸The eight countries that became EU members in 2004 are the Czech Republic, Estonia, Hungary, Latvia, Lithuania, Poland, Slovakia, and Slovenia.

⁹We replicate our analysis for the 1997–2009 period using HICP data and find that our results and conclusions remain robust across the two inflation measures. The results of the HICP analysis are not reported in the paper to save space but are available from the authors upon request.

depreciation. Moreover, inflation rates varied widely across the sample. By 1995, all countries were able to reduce inflation to double-digit levels and the cross-country variations also declined substantially, mostly due to the success of structural reforms and stabilization policies.

Second, the moderate rates of inflation achieved by the mid 1990s were persistent in most countries. Negative demand shocks (e.g., lower external demand from the EU and Russia) and positive supply shocks (e.g., falling oil and food prices in the wake of the Asian financial crisis) contributed to the decline in inflation rates during the late 1990s. The downward spiral came to a halt and inflation picked up again in a number of transition countries in 2000. This is attributed to increased demand in the EU and Russia and increases in the price of oil (Backe et al., 2002). In contrast to the rest of CEE, Bulgaria and Romania were slow in implementing structural reforms and suffered from hyperinflation in the late 1990s. After experiencing a devastating financial and banking crisis in 1996–1997, Bulgaria introduced a currency board and drastically reduced its rate of inflation. However, Romania did not succeed in reducing consumer price inflation to the single-digit level until 2005.

Third, the average inflation rate dropped immediately after the EU accession of the 8 CEE countries in 2004, followed by a gradual increase and a significant spike in 2008. This reflects a credit boom across CEE that peaked before the global financial crisis hit the region in late 2008 and early 2009. The inflation was also fueled by a surge in oil and food prices that affected almost all economies around the world. The trend abruptly reversed in 2009 as the global financial crisis caused average inflation in CEE to drop to its lowest level since the beginning of the transition.

2.2 Methodology

The focus of our analysis is on the dynamics of inflation in EU accession countries of CEE relative to the EA benchmark over the period 1990–2009. For this purpose, we define relative inflation as the difference between the natural logarithms of inflation in a given CEE country and of the benchmark inflation. Following the relevant EA convergence criterion, we calculate the benchmark as the average of the annual nonnegative inflation rates of the three best performing (i.e., with lowest inflation) EU member states plus 1.5 percent.¹⁰ Accordingly, a relative inflation rate that equals or is less than zero

¹⁰As mentioned in the introduction, previous studies on relative inflation in CEE have often used Germany as numeraire given its reputation for low inflation. However, for most of the 1990s, Germany was not among the three EU member countries with the lowest rates of inflation.

indicates that an EA accession country has fulfilled the inflation/price stability criterion set in the Maastricht Treaty. Convergence to the EA accession standard is thus defined in our model as the movement of relative inflation in CEE countries towards zero over time.

Figure 1 displays the average of relative inflation rates in CEE countries over the sample period. There was a large gap between the average inflation rate in CEE and the EA accession benchmark in the 1990s; however, since 1992 there was a clear downward trend in relative inflation which bottomed out in 2003 just before the accession of the first group of CEE countries. In fact, average relative inflation in 2003 was below zero, that is, average inflation was below the benchmark, thanks to the extremely low inflation in the Czech Republic, Poland, and Estonia. However, this trend was reversed after 2004, although the deviation in CEE inflation from the benchmark remained relatively small. The global financial crisis appears to have caused the average CEE inflation rate to converge again towards the benchmark in 2009.

The existing literature addresses the issue of inflation convergence between CEE and EU countries by examining if the stochastic shocks that cause inflation differentials across countries are temporary in nature and would thus have no effect on inflation convergence in the long run (Kutan and Yigit, 2004; Drine and Rault, 2006; Siklos, 2010).¹¹ The presence of this stochastic convergence is usually investigated by testing for stationarity of the inflation differential series using unit root tests. Further, the use of cointegration tests helps detect a common stochastic trend which is interpreted as evidence of convergence. However, the power of the standard unit root/cointegration tests is often low in small samples and therefore the results obtained are suspect. Some studies resort to panel unit root/cointegration tests to make up for lack of power in univariate unit root tests. But panel test procedures have their own problems.¹² We, therefore, use a completely different method: a non-parametric technique to study inflation dynamics in EU accession countries of CEE relative to EU inflation.¹³ Following Quah (1996b, 1997), we use kernel density estimates to examine the shape of the distribution of relative

¹¹This literature on inflation convergence has its predecessor in the empirical growth literature. Early studies in the area of growth empirics tested for the existence of a negative relationship between the average income growth over a period of time and the initial level of income which became known as β -convergence (Barro and Sala-i-Martin, 1992). Kocenda et al. (2006) and Figuet and Nenovsky (2006) employ this methodology to study inflation convergence in CEE.

¹²For a general discussion, see Baltagi (2005). Mark and Sul (2008) who also discuss some issues related to the use of panel unit root test in the study of real exchange rate.

¹³In a series of seminal papers, Quah (1993a, b, 1996a, b, c, 1997) criticized the standard econometric approaches to income convergence arguing that their focus on the first (β -convergence) and second (σ -convergence) moments of the income distribution describe the dynamics of a representative economy but fail to characterize the evolution of the entire income distribution over time.

inflation in CEE and transition probability functions to investigate distributional dynamics and intradistributional mobility. This methodology is particularly suitable for the study of relative inflation convergence in CEE because of the heterogeneity across transition economies.¹⁴ To the best of our knowledge, Beck and Weber (2005) is the only paper that has ever applied distribution dynamics to explore inflation convergence. They focus on inflation convergence across regional economies in six EA member states.

The first step of the analysis involves estimating a probability density function of relative inflation using a kernel function. Let X_1, \dots, X_n be a sample of n independent and identically distributed observations on a random variable X . The density value $f(x)$ at a given point x is estimated by the following kernel density estimator:

$$\hat{f}(x) = \frac{1}{nh} \sum_{i=1}^n K\left(\frac{x - X_i}{h}\right) \quad (1)$$

where h denotes the bandwidth of the interval around x and K is the kernel function.¹⁵ The kernel estimator assigns a weight to each observation in the interval around x with the weight being inversely proportional to the distance between the observation and x . The density estimate consists of the vertical sum of frequencies at each observation. The resulting smooth curve allows us to visualize the shape of the distribution of relative inflation and detect the presence of “convergence clubs” represented by modes.

The next step of the analysis is to study the dynamics of the inflation distribution and the intradistributional mobility of CEE countries by estimating a transition probability matrix. Let Q_t denotes the distribution of relative inflation across CEE countries at time t . The distribution at time $t+1$ is then described by:

$$Q_{t+1} = M \times Q_t \quad (2)$$

where M is a finite discrete first-order Markov transition matrix that contains a complete description of the distributional dynamics as it maps Q_t into Q_{t+1} .

¹⁴Countries like the Czech Republic or Poland have always been at the forefront of economic reforms and received recognition by being among the first to be admitted in the EU. In contrast, Bulgaria and Romania were relatively slow in implementing painful structural reforms and their EU accession has proved tortuous. The global economic crisis in 2008–2010 further highlighted the differences across CEE. While Hungary, Latvia, and Romania had to be rescued by the IMF, the economy of Poland proved resilient amid the crisis.

¹⁵We use data-driven bandwidth selection and a Gaussian kernel.

The transition matrix is given by

$$M = \begin{pmatrix} p_{11} & \dots & p_{1N} \\ \vdots & \ddots & \vdots \\ p_{N1} & \dots & p_{NN} \end{pmatrix} \quad (3)$$

where p_{ij} with $i, j=1, \dots, N$ is the probability of a transition from an initial state i at time t to a state j at time $t+1$. The main diagonal of the matrix consists of the probabilities that an observation remains in the same state in t and $t+1$.

Assuming that the transition probabilities from t to $t+1$ are time-invariant and independent of any previous transitions, the evolution of intradistributional mobility can be studied by iterating Eq. (2) k times. As $k \rightarrow \infty$, the iteration yields

$$\lim_{k \rightarrow \infty} M_{ij}^k = \delta_j > 0, \quad \sum \delta_j = 1 \quad (4)$$

where $i, j=1, \dots, N$ denotes the initial state at time t and the final state at time $t+1$, respectively. The limiting probability distribution, δ_j , across all final states j is the unconditional or ergodic distribution.¹⁶ In other words, Eq.(4) describes the convergence to a steady-state distribution independent of the initial distribution. Accordingly, the ergodic distribution allows us to analyze the long-run tendencies of inflation in CEE countries relative to the EA accession benchmark assuming that the observed dynamics continue to hold.

The transition probability matrix approach has two major drawbacks that might distort the distributional dynamics. First, it uses continuous data on relative inflation to estimate a discrete model. Second, the discretization of the state space into states i and j , with $i, j=1, \dots, N$ is somewhat arbitrary. To avoid these potential issues and test for the robustness of the results, we focus – in the third step of our analysis – on transition probabilities in a continuous state space and, following Quah (1997), estimate a stochastic kernel that maps the distribution Q_t into $Q_{t+\tau}$ as follows:

$$Q_{t+\tau}(x_{t+\tau}) = \int g(x_{t+\tau}|x_t) Q_t(x_t) dx \quad (5)$$

where the conditional density function $g(x_{t+\tau}|x_t)$ describes the probability of the transition to a certain state in $t+\tau$ given the initial state in t . In line with Hyndman et al. (1996), the conditional density is estimated using a kernel estimator given by

¹⁶The ergodic distribution is unique if there is only one eigenvalue of M with modulus one.

$$\hat{g}(x_{t+\tau}|x_t) = \frac{\hat{z}(x_{t+\tau}, x_t)}{\hat{f}(x_t)} \quad (6)$$

where $f(x_t)$ is the marginal density from Eq. (1) and $z(x_{t+\tau}, x_t)$ is the joint density given by

$$z(x_{t+\tau}, x_t) = \frac{1}{nhb} \sum_{i=1}^n K\left(\frac{x_{t+\tau} - X_{i,t+\tau}}{b}\right) \left(\frac{x_t - X_{it}}{h}\right) \quad (7)$$

with h and b denoting the bandwidth of the interval around x_t and $x_{t+\tau}$ respectively. The visual representation of the stochastic kernel produces three-dimensional graphs and two-dimensional contour plots. Like a Markov transition matrix, the main diagonal in these graphs indicate a lack of mobility across states.

3. Empirical Results

The kernel density distribution of relative inflation for different years of the sample period is presented in Figure 2. At the beginning of market transition in 1990, two distinctive modes are observed. The mode at lower levels of relative inflation (larger peak) represents those CEE countries (larger in number) that were yet to introduce price liberalization. In contrast, the larger mode (smaller peak) represents the few frontrunners in market reforms, such as Poland and Slovenia, that were already experiencing high inflation. By the mid 1990s, all CEE countries in the sample had liberalized their prices, leading to higher average relative inflation illustrated by the marked shift of the distribution to the right. While inflation was rising for most countries, it was already falling in case of the early reformers. The concentration of the probability mass around the mean value of 2.8 in 1995 indicates that there was convergence in relative inflation within a group of CEE countries. This process was reversed in the second half of the 1990s as some countries, such as Bulgaria and Romania, experienced financial crises accompanied by hyperinflation, while others, including the Baltics and the Czech Republic, recorded their lowest relative inflation in a decade. This intradistributional divergence is reflected in a widening of the distribution for the year 2000.

The graphs for 2004 and 2005 in Figure 2 show that in the year following the EU accession of the first eight CEE countries, there was a significant shift of the distribution to the left, indicating inflation convergence of the CEE towards the EA accession benchmark. In fact, the 2005 distribution exhibits a single peak at the benchmark value, which also suggests that there was

inflation convergence among CEE countries. However, this situation did not last long as the global financial crisis reached the region by the second half of 2008 and affected some economies, such as Hungary and Latvia, more severely than others. The divergence in inflation between those economies that weathered the crisis without serious implications and those devastated by it is illustrated in the widening of the 2009 distribution that resembles the situation in 2000.

While the graphs in Figure 2 are snapshots of the kernel density distribution in a given year, the evolution of the distribution of relative inflation over the entire sample period is presented in Figure 3. Two general trends are clearly visible. First, there is convergence in inflation within CEE, as indicated by the gradual transition from a multimodal distribution with a high variance in the early 1990s to a single peak in the mid 2000s. Second, the gradual shift of the distribution towards zero mean suggests that mean relative inflation has been declining over the sample period which is a sign of convergence in inflation between the EU accession countries of CEE and the EA accession benchmark. Not surprisingly, this shift appears to have been more intense between the late-1990s when the EU accession negotiations began and the mid-2000s when actual accession took place.

We further investigate the dynamics of inflation in the EU accession countries *vis-à-vis* the EA benchmark by examining the Markov transition matrix as shown in Table 2. This matrix describes the transitions of countries from one state to another over the sample period(s) within the distribution of relative inflation. In line with the literature, we discretize the state space into four intervals chosen in such a way that each interval contains an approximately equal number of transitions. The four intervals can be interpreted as representing states in which inflation is (1) at or below the EA accession benchmark, (2) slightly above the benchmark, (3) moderately (1–2 percent) exceeding the benchmark, and (4) far exceeding the benchmark, respectively. Each cell in a given row of the matrix in Table 2 shows the probability of a transition from the initial state to one of the four states. The values along the diagonal represent the cases in which relative inflation remains in the same interval (state) from one period to the next, and are thus indicative of inflation persistence. Probabilities are estimated for transitions over 1- and 5-year horizons to test for robustness of the results.

The probabilities for annual transition along the diagonal of the first matrix of Table 2 are higher than those off the diagonal. This is an indication of persistence in relative inflation among the EU accession countries during the sample period. Furthermore, the fact that the two highest values occur in the upper left and the lower right cell suggest that the countries with inflation

below the EA accession benchmark and those with inflation far exceeding the benchmark were most likely to remain in these categories from one year to the next. In the middle of the distribution, countries would not make a transition to a different state of relative inflation in more than half of all cases. There was a 28 percent chance that CEE countries with inflation slightly above the benchmark would end up in a state with a lower inflation closer to the benchmark. The countries with inflation moderately above the benchmark were likely to make a transition to a level closer to the benchmark in one-third of the cases. In contrast, the probability of experiencing higher inflation than in the initial state (with slightly or moderately above benchmark inflation) was much lower. These results are indicative of a tendency among CEE countries, except for those with very high inflation, to converge in inflation towards the benchmark. The estimated ergodic distribution, shown at the bottom of the matrix, confirms this trend in the long run. It points to a right-skewed distribution, which means that in about two-thirds of cases, CEE countries would tend to have relative inflation rates that are either below, exactly at, or slightly above the EA benchmark.

To test for robustness of these findings and control for cyclical fluctuations, we also include a matrix for 5-year transitions over the entire sample period in Table 2. The tendency for inflation to converge towards the EA benchmark over the 5-year horizon is stronger than for annual transitions. There was only a 20 percent chance that countries experiencing moderate or high inflation would remain in the same states. These countries had a 60–80 percent chance of moving towards the EA benchmark inflation, while the ones that were initially below or at the EA benchmark had a 60 percent chance of remaining at these levels. The ergodic distribution is again skewed to the right with 90 percent of all cases achieving inflation very close to or below the accession benchmark.

The results for the ergodic distribution are based on the assumption that the distributional dynamics over the entire sample period remains the same in the long run, which could be misleading given the volatility associated with transition in CEE, especially in the early-1990s. To see if this assumption has any significant influence on the results, we construct separate Markov transition matrices for three sub-periods: 1990–1997, 1997–2004, and 2004–2009. These matrices are presented in Table 3. The annual transitions over the period 1990–1997 reveal convergence tendencies within the distribution but away from the EA accession benchmark. The countries with the lowest initial inflation were more likely to experience higher levels of inflation in the following year than to stay close to the benchmark. Those with highest levels of relative inflation exhibited a higher probability of persistence in

the initial state and, to a lesser degree, were likely to transition to the next lower state which was still distant from the benchmark. The intradistributional mobility during this early period of transition in CEE results in an ergodic distribution that seems almost uniform. CEE countries were approximately as likely to experience inflation rates close to the benchmark as to inflation rates of 3–6 percent above the benchmark.

The transition matrix for the period 1997–2004 in Table 3 presents a different picture. There is high persistence of relative inflation at both ends of the distribution. However, in the middle of the distribution, CEE countries were almost as likely to move to lower levels of inflation in the following year as to stay at the initial levels. This is an indication of convergence towards the lower end of the distribution that represents the interval around the EA accession benchmark. The ergodic distribution lends further support to this finding as it is skewed to the right with almost 70 percent probability of inflation being sufficiently close to fulfilling the EA accession requirement. Thus, this sub-period that coincides with the EU accession of the first group of CEE countries exhibits strong tendency for convergence towards the EA benchmark.

During the period between EU accession and the start of the global economic crisis, relative inflation remained low compared to previous periods; however, intradistributional transitions exhibit different dynamics, as revealed by the third matrix of Table 3. At the low end of the distribution, there was an equal chance of staying at the initial level or moving to the higher levels. At the other end, the probability of staying at the same level and that of transitioning to the next lower interval were the same. In contrast, countries with inflation slightly higher than the benchmark were more likely to move downward, whereas those with inflation moderately higher than the benchmark had a higher chance of moving upward. These trends are reflected in the bimodal ergodic distribution that indicates a divergence in relative inflation between two groups of CEE countries.

One of the concerns with Markov transition matrix is that the state space is divided into arbitrary discrete intervals. Given that inflation is a continuous variable, it would be useful to test for robustness of the results by estimating transition probabilities in a continuous state space. The resulting stochastic kernels of annual and 5-year transitions for the entire sample period are presented in Figure 4. The vertical dimension of the three-dimensional graph measures the conditional probability of a country experiencing relative inflation of x percent in $t+1$, given that it had a relative inflation rate of y percent in year t . As with the Markov transition matrix, peaks along the main diagonal indicate high persistence of relative inflation and lack of intradistributional

mobility. Figure 4 also includes contour plots that provide a two-dimensional view of the distributions, where the contours represent points of equal frequency.

The stochastic kernel of annual transitions in Figure 4 indicates that a large portion of the probability mass in the middle of the distribution is clustered around the main diagonal. However, there are signs of mobility at both ends of the distribution. At lower levels of relative inflation, a peak above the main diagonal suggests that countries with initial inflation below the accession benchmark experienced higher inflation rates in the following year, but these were still clustered around the benchmark. At the high end of the distribution, a very pronounced mode can be observed below the main diagonal, indicating that countries with initial inflation far exceeding the benchmark were likely to achieve a slightly lower inflation in the following period, thus moving closer to the benchmark. Over a 5-year horizon, these convergence tendencies intensify as illustrated by the lack of concentration along the main diagonal of the contour plot. Countries with initial inflation levels below the benchmark have a very high probability of ending up clustered at or slightly above the benchmark. On the other hand, those with moderate to high initial relative inflation are also very likely to converge towards the same level close to the benchmark after a 5-year period.

The convergence tendencies towards the benchmark shown in Figure 4 concur broadly with the results from the Markov transition matrices in Table 2, even though it is obvious that the stochastic kernels provide a more detailed picture of intradistributional mobility that is obscured by the somewhat arbitrary discretization of the state space in the transition matrix.¹⁷

The stochastic kernels for the three sub-periods presented in Figure 5 reflect very different dynamics. For the first period up to 1997, the probability mass is widely spread above and below the main diagonal. While a high probability density above the diagonal indicates a divergence away from the benchmark, clustering of probability mass below the diagonal reflects a tendency for convergence in relative inflation towards the benchmark. This is largely in line with the corresponding ergodic distribution in Table 3, which is almost uniform across the four states. Furthermore, the stochastic kernel reveals comparatively high persistence at the level of 2 percent and a high probability of downward mobility at initial inflation levels above 5 percent.

¹⁷For instance, the Markov transition matrix in Table 2 treats relative inflation ranging from 2.18 to 5.96 percent in a single interval and indicates persistence of almost 80 percent. The stochastic kernel shows that countries with initial inflation of between 4 and 6 percent have a high probability of achieving inflation levels of around 3 percent in the following year.

In the subsequent period preceding the EU accession of 2004, the volatile intradistributional mobility largely disappeared and the probability mass is now clustered around the main diagonal. High persistence of relative inflation can be detected at around 1 percent and to a smaller extent at 4 percent. However, mobility is visible at both ends of the distribution. As we can see from the contour plot for 1997–2004, at initial levels of relative inflation above 5 percent, there is a probability of more than 60 percent that a country would move to a relative inflation of less than 2 percent, indicating strong convergence towards the EA benchmark. Furthermore, at initial levels lower than zero percent, there is a tendency to move closer to the benchmark with a probability of around 40 percent.

After 2004, intradistributional mobility increased again, as illustrated by the spread of contour lines over the entire plot. It is obvious that the dynamics resulted in a thinning in the middle of the distribution and an accumulation at each of the tails. The emergence of two modes, one around the benchmark and the second at around 1.5 percent of relative inflation, corresponds to the bimodal ergodic distribution for 2004–2009 reported in Table 3.

In summary, the inflation dynamics in ten EU accession countries of CEE during the past two decades can be characterized by dividing this period into three phases. In the first phase spanning from 1990 to the late 1990s, these countries seemed to be clustered around two different levels of inflation that largely reflect differences in timing and speed of market reforms. The second phase that coincides with the process of EU accession witnessed a strong tendency for inflation convergence among these EU accession countries towards the EA benchmark. This result is consistent with the findings of some previous studies (for example, Becker and Hall 2009 and Kocenda et al. 2006) and seems to indicate that these countries made concerted efforts to meet the pre-conditions for accession. The third phase that covers the post-accession period is marked by a tendency among some countries to converge in inflation towards the EA benchmark while the others diverge away from the benchmark but cluster among themselves. These tendencies seem to reflect the differences in economic performances among the CEE countries in recent times.

4. Concluding Remarks

Following a tumultuous transition, ten CEE countries succeeded in becoming EU members and must meet the Maastricht convergence criteria before joining EA and adopting the euro. This paper focused on the price stability criterion and examined the inflation dynamics in the ten CEE acces-

sion countries from the beginning of transition in 1990 to the recent global economic crisis. We employ non-parametric methods to investigate convergence toward the EA accession benchmark as well as inflation convergence among the CEE accession countries. Our findings suggest that, over the past two decades, there was, in general, a decisive shift of the distribution of CEE inflation rates towards the EA reference level, which was accompanied by intradistributional convergence within the CEE sample. However, these convergence tendencies were not uniform. In the early period of transition when the speed and composition of economic reforms differed across CEE, inflation rates were almost as likely to move closer to the benchmark as they were to diverge from it, resulting in a multimodal distribution. In the years leading up to the EU membership, increasing economic stability and the common goal of EU accession in CEE were reflected in the emergence of a unimodal distribution of inflation rates, which shifted closer to the EA benchmark. In more recent years, differences in the economic performance across CEE became apparent and were magnified by the global economic crisis causing a stratification of inflation rates into two convergence clubs. In addition, the divergence in inflation rates within CEE occurred simultaneously with convergence of certain countries towards the EA inflation benchmark, which is an indication that only a select few will be successful in their bid to join the EA in the near future.

Table 1

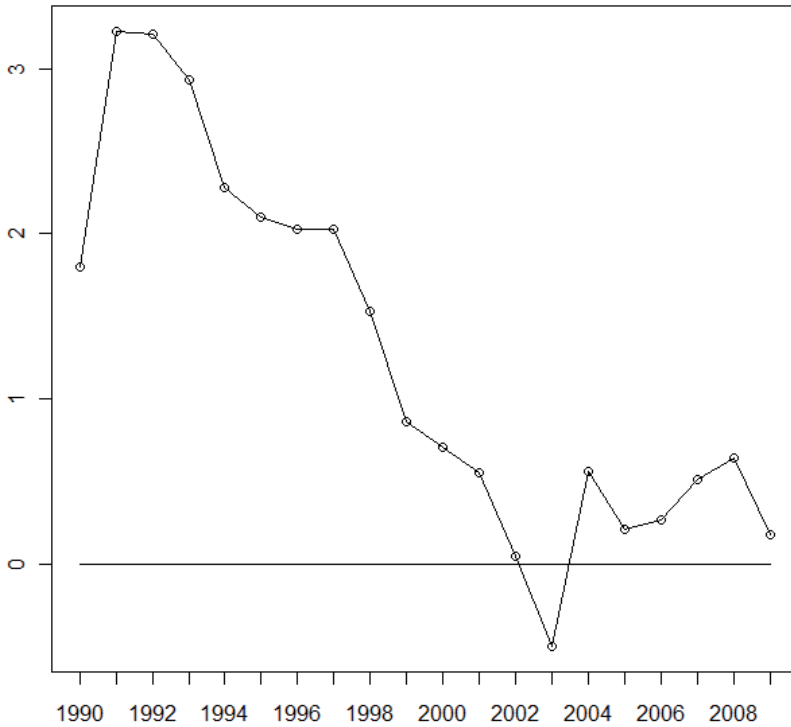
RATES OF INFLATION IN CEE COUNTRIES: 1990–2009 (AVERAGE ANNUAL PERCENTAGE CHANGES IN CPI)

Year\Countries	Average Annual Percentage Changes in CPI										Average Standard deviation	
	Bulgaria	Czech Republic	Estonia	Hungary	Latvia	Lithuania	Poland	Romania	Slovakia	Slovenia		
1990	23.8	9.7	23.1	29.0	10.5	8.4	555.4	5.1	10.8	551.6	122.7	227.2
1991	338.5	56.6	210.5	34.2	172.2	224.7	76.7	170.2	61.2	115.0	146.0	95.5
1992	91.3	11.1	1,076.0	23.0	243.3	1,020.5	45.3	211.2	10.0	207.3	293.9	407.3
1993	72.9	20.8	89.8	22.5	108.8	410.2	36.9	255.2	23.2	32.9	107.3	128.0
1994	96.1	10.0	47.7	18.9	35.9	72.2	33.3	136.8	13.4	21.0	48.5	41.3
1995	62.1	9.2	28.8	28.3	25.0	39.7	28.1	32.2	9.9	13.5	27.7	15.7
1996	121.6	8.8	23.1	23.6	17.6	24.6	19.8	38.8	5.8	9.8	29.4	33.8
1997	1,058.4	8.6	10.6	18.3	8.4	8.9	15.1	154.8	6.1	8.4	129.7	329.4
1998	18.7	10.6	8.2	14.2	4.7	5.1	11.7	59.1	6.7	7.9	14.7	16.2
1999	2.6	2.1	3.3	10.0	2.4	0.8	7.3	45.8	10.6	6.2	9.1	13.3
2000	10.3	3.9	4.0	9.8	2.7	1.0	10.1	45.7	12.0	8.9	10.8	12.8
2001	7.4	4.7	5.7	9.2	2.5	1.4	5.5	34.5	7.3	8.4	8.7	9.4
2002	5.8	1.8	3.6	5.3	1.9	0.3	1.9	22.5	3.3	7.5	5.4	6.4
2003	2.2	0.1	1.3	4.6	3.0	-1.1	0.8	15.3	8.6	5.6	4.0	4.9
2004	6.4	2.8	3.1	6.8	6.2	1.1	3.6	11.9	7.6	3.6	5.3	3.1
2005	5.0	1.9	4.1	3.6	6.7	2.7	2.1	9.0	2.7	2.5	4.0	2.3
2006	7.3	2.5	4.4	3.9	6.5	3.8	1.1	6.6	4.5	2.5	4.3	2.0
2007	8.4	2.9	6.6	7.9	10.1	5.7	2.4	4.8	2.8	3.6	5.5	2.7
2008	12.4	6.4	10.4	6.1	15.4	10.9	4.4	7.9	4.6	5.7	8.4	3.7
2009	2.8	1.0	0.2	4.2	3.5	4.5	3.9	5.6	1.6	0.9	2.8	1.8
Average	97.7	8.8	78.2	14.2	34.4	92.3	43.3	63.6	10.6	51.1	122.7	227.2
Standard dev.	239.2	12.3	239.8	9.7	64.9	240.4	122.1	77.1	12.9	127.8	146.0	95.5
Average (post-accession period)	7.9	2.9	4.8	4.8	8.1	4.8	2.9	6.1	4.0	3.1	8.4	3.7
Std. dev. (post-accession period)	4.8	1.8	3.4	1.8	4.2	4.2	1.2	1.2	2.1	1.6	2.8	1.8

Source: International Monetary Fund

Figure 1

**AVERAGE RELATIVE INFLATION OF CEE ACCESSION COUNTRIES,
1990–2009**



Note: The line at the origin represents the EU accession benchmark which is measured as the average of the inflation in the three EU member states with the lowest inflation plus 1.5 percent. A relative inflation of zero or less indicates that the CEE countries have on average fulfilled the EU accession criteria on inflation.

Figure 2

DENSITY PROBABILITY DISTRIBUTIONS OF RELATIVE INFLATION IN CEE

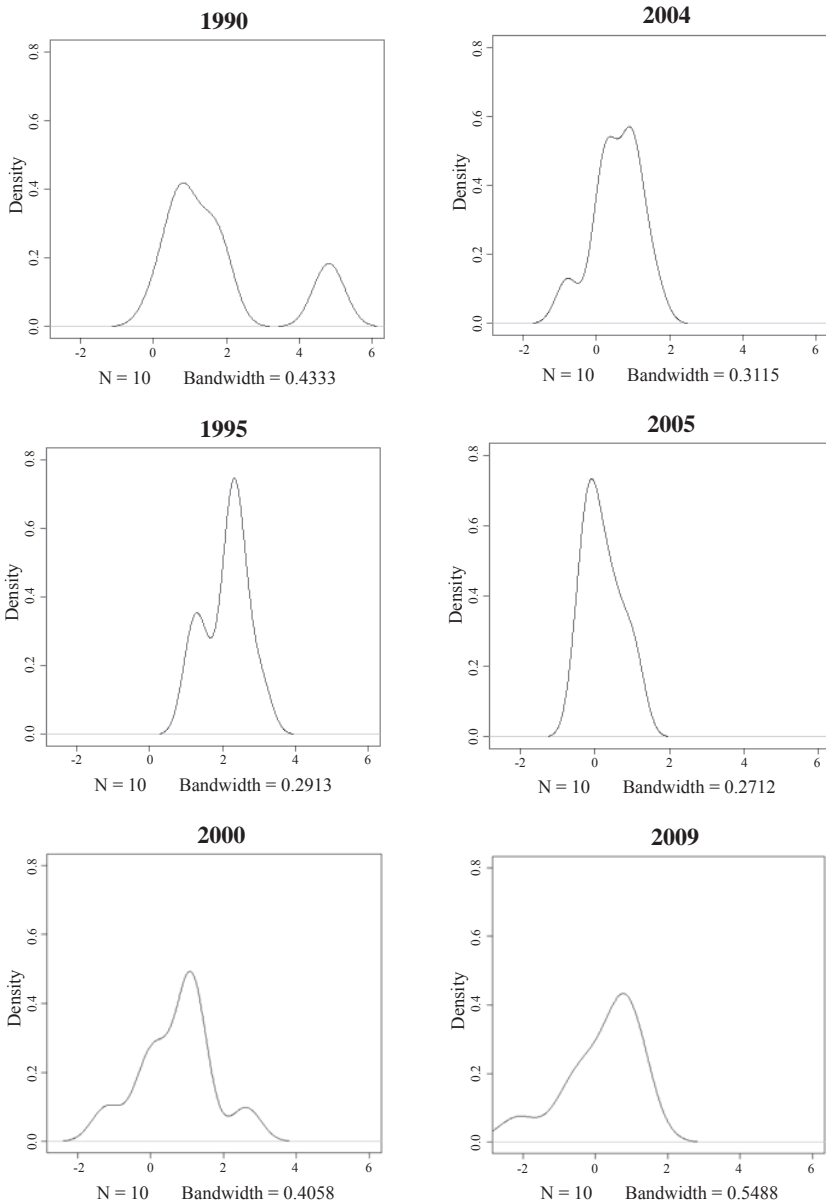


Figure 3

DISTRIBUTION DYNAMICS OF RELATIVE INFLATION, 1990–2009

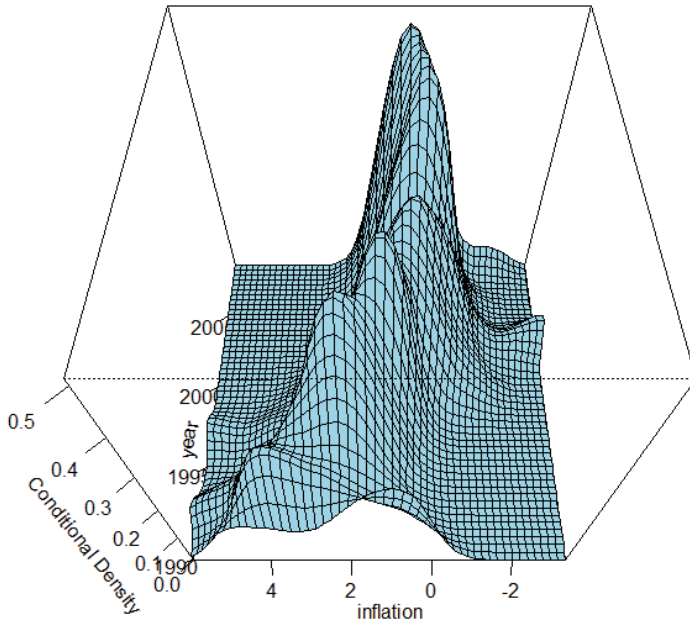


Table 2

**MARKOV TRANSITION MATRICES AND ERGODIC DISTRIBUTIONS,
1990–2009**

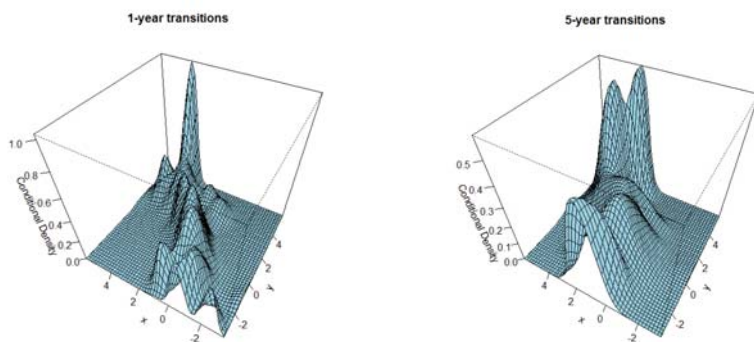
<i>1-year transitions, 1990–2009</i>					
State	[-3.34; 0.40)	[0.40; 1.10)	[1.10; 2.18)	[2.18; 5.96]	n
[-3.34; 0.40)	0.75	0.23	0.00	0.02	48
[0.40; 1.10)	0.28	0.49	0.15	0.09	47
[1.10; 2.18)	0.06	0.27	0.60	0.06	48
[2.18; 5.96]	0.00	0.04	0.17	0.79	47
n	52	49	44	45	190
Ergodic	0.36	0.27	0.18	0.19	
<i>5-year transitions, 1990–2009</i>					
State	[-3.34; 0.70)	[0.70; 1.33)	[1.33; 2.39)	[2.39; 5.95]	n
[-3.43; 0.70)	0.58	0.34	0.03	0.05	38
[0.70; 1.33)	0.63	0.32	0.05	0.00	38
[1.33; 2.39)	0.43	0.32	0.22	0.03	37
[2.39; 5.95]	0.16	0.30	0.35	0.19	37
n	68	48	24	9	150
Ergodic	0.57	0.33	0.06	0.04	

Table 3

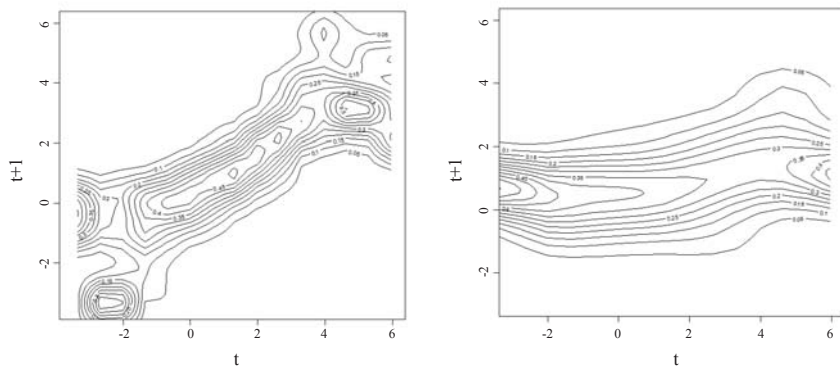
MARKOV TRANSITION MATRICES AND ERGODIC DISTRIBUTIONS BY SUBPERIOD

<i>1-year transitions, 1990–1997</i>					
State	[0.12; 1.70)	[1.70; 2.30)	[2.30; 3.30)	[3.30; 5.95]	n
[0.12; 1.7)	0.44	0.17	0.11	0.28	18
[1.70; 2.30)	0.39	0.61	0.00	0.00	18
[2.30; 3.30)	0.12	0.24	0.47	0.18	17
[3.30; 5.95]	0.00	0.06	0.41	0.53	17
n	17	19	17	17	70
Ergodic	0.25	0.29	0.23	0.23	
<i>1-year transitions, 1997–2004</i>					
State	[-3.35; 0.10)	[0.10; 0.80)	[0.80; 1.30)	[1.30; 5.95]	n
[-3.35; 0.10)	0.59	0.24	0.17	0.00	17
[0.10; 0.80)	0.39	0.44	0.17	0.00	18
[0.80; 1.30)	0.00	0.44	0.44	0.12	18
[1.30; 5.95]	0.06	0.06	0.24	0.64	17
n	17	21	18	13	70
Ergodic	0.34	0.34	0.24	0.08	
<i>1-year transitions, 2004–2009</i>					
State	[-2.14; 0.00)	[0.00; 0.40)	[0.40; 0.90)	[0.90; 1.55]	n
[-2.14; 0.00)	0.50	0.33	0.17	0.00	12
[0.00; 0.40)	0.42	0.25	0.25	0.08	12
[0.40; 0.90)	0.15	0.00	0.38	0.47	13
[0.90; 1.55]	0.15	0.07	0.38	0.38	13
n	15	8	15	12	50
Ergodic	0.30	0.15	0.30	0.25	

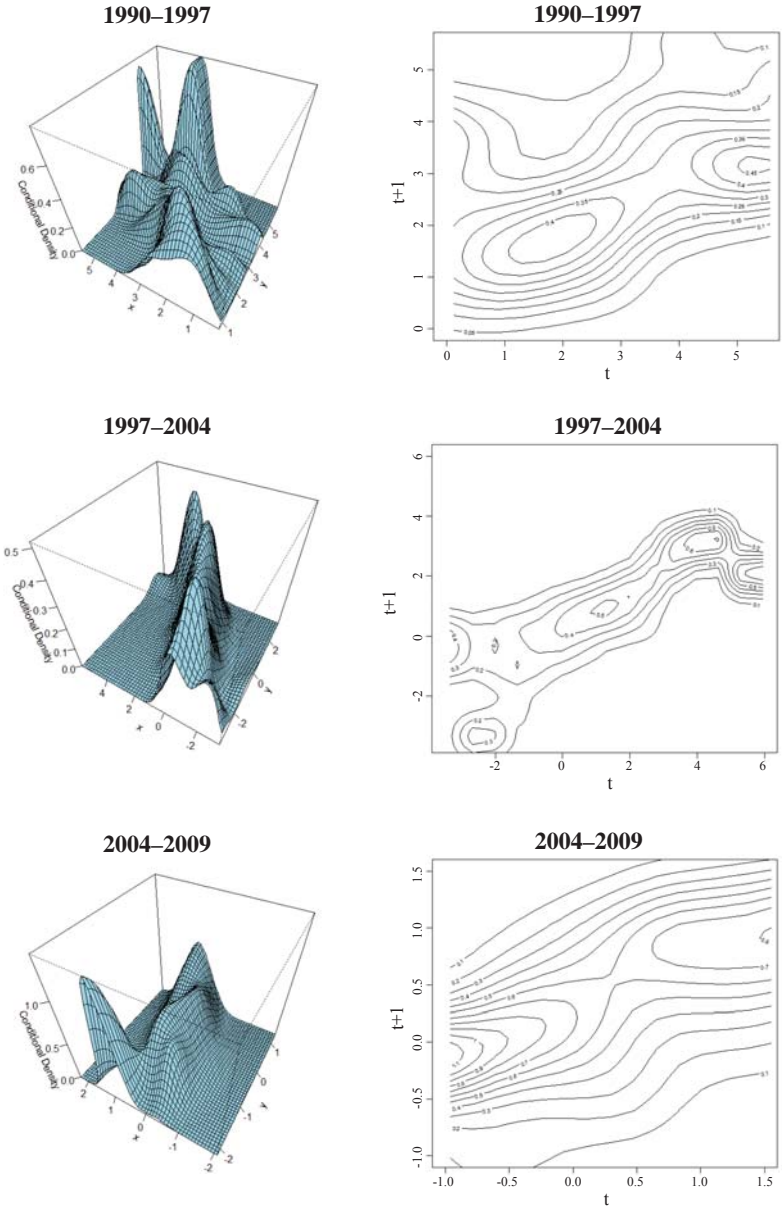
THE STOCHASTIC KERNEL OF RELATIVE INFLATION DYNAMICS, 1990–2009



Note: x and y denote the relative inflation of CEE countries in year $t + 1$ and t , respectively. The conditional density function $g(x_{t+1} | x_t) = g(y | x)$ is plotted on the vertical axis.



ANNUAL TRANSITIONS OF RELATIVE INFLATION BY SUBPERIOD



References

Backe, P., Fidrmuc, J., Reininger, T. and Schardax, F., 2002. "Price Dynamics in Central and Eastern European EU Accession Countries." Oesterreichische Nationalbank Working Paper 61.

Baltagi, B. H., 2005. *Econometric Analysis of Panel Data*. Third edition. West Sussex, U.K.: John Wiley & Sons Ltd.

Barro, R. J. and Sala-i-Martin, X., 1992. "Convergence" *Journal of Political Economy* 100, 223-251.

Beck, G. and Weber, A., 2005. "Price stability, inflation convergence and diversity in EMU: Does one size fit all?" Center for Financial Studies Working Paper 30.

Becker, B. and Hall, S., 2009. "How far from the Euro Area? Measuring convergence of inflation rates in Eastern Europe." *Economic Modelling* 26, 788-798.

Brada, J., Kutan, A. and Zhou, S., 2005. "Real and monetary convergence between the European Union's core and recent member countries: A rolling cointegration approach," *Journal of Banking & Finance* 29, 249-270.

Buiter, W., 2005. "To Purgatory and Beyond: When and how should the accession countries from Central and Eastern Europe become full members of the EMU?" In Fritz Breuss and Eduard Hochreiter (eds.) *Challenges for Central Banks in an Enlarged EMU*, New York: Springer, 145-186.

Drine, I. and Rault, C., 2006. "Testing for inflation convergence between the Eurozone and its CEE partners." *Applied Economic Letters* 13, 235-240.

Figuet, J.M., and Nenovsky, N., 2006. "Convergence and shocks in the road to EU: Empirical investigations for Bulgaria and Romania." William Davidson Institute Working Paper 810.

Hyndman, R., Bashtannyk, D. and Grunwald, G., 1996. "Estimating and visualizing conditional densities." *Journal of Computational and Graphical Statistics* 5, 315-336.

Kocenda, E., Kutan, A. and Yigit, T., 2006. "Pilgrims to the Eurozone: How far, how fast?" *Economic Systems* 30, 311-327.

Kutan, A. and Yigit, T., 2004. "Nominal and real stochastic convergence of transition economies". *Journal of Comparative Economics* 32, 23-36.

Mark, N.C. and Sul, D., 2008. "PPP Strikes Out: The Effect of Common Factor Shocks on the Real Exchange Rate." Mimeo, University of Notre Dame.

Quah, D. T., 1993a. "Galton's fallacy and the convergence hypothesis." *Scandinavian Journal of Economics* 95, 427-443.

Quah, D. T., 1993b. "Empirical cross-section dynamics in economic growth." *European Economics Review* 37, 426-434.

Quah, D. T., 1996a. "Convergence empirics across economies with (some) capital mobility" *Journal of Economic Growth* 1, 95-124.

Quah, D. T., 1996b. "Empirics for economic growth and convergence" *European Economic Review* 40, 1353-1375.

Quah, D. T., 1996c. "Twin Peaks: growth and convergence in models of distribution dynamics." *Economic Journal* 106, 1045-1055.

Quah, D. T., 1997. "Empirics for growth and distribution: stratification, polarization and convergence clubs." *Journal of Economic Growth* 2, 27-59.

Siklos, P., 2010. "Meeting Maastricht: Nominal convergence of the new member states toward EMU." *Economic Modelling* 27, 507-515.

DISCUSSION PAPERS

- DP/1/1998 **The First Year of the Currency Board in Bulgaria**
Victor Yotzov, Nikolay Nenovsky, Kalin Hristov, Iva Petrova, Boris Petrov
- DP/2/1998 **Financial Repression and Credit Rationing under Currency Board Arrangement for Bulgaria**
Nikolay Nenovsky, Kalin Hristov
- DP/3/1999 **Investment Incentives in Bulgaria: Assessment of the Net Tax Effect on the State Budget**
Dobrislav Dobrev, Boyko Tzenov, Peter Dobrev, John Ayerst
- DP/4/1999 **Two Approaches to Fixed Exchange Rate Crises**
Nikolay Nenovsky, Kalin Hristov, Boris Petrov
- DP/5/1999 **Monetary Sector Modeling in Bulgaria, 1913–1945**
Nikolay Nenovsky, Boris Petrov
- DP/6/1999 **The Role of a Currency Board in Financial Crises: The Case of Bulgaria**
Roumen Avramov
- DP/7/1999 **The Bulgarian Financial Crisis of 1996–1997**
Zdravko Balyozov
- DP/8/1999 **The Economic Philosophy of Friedrich Hayek (The Centenary of his Birth)**
Nikolay Nenovsky
- DP/9/1999 **The Currency Board in Bulgaria: Design, Peculiarities and Management of Foreign Exchange Cover**
Dobrislav Dobrev
- DP/10/1999 **Monetary Regimes and the Real Economy (Empirical Tests before and after the Introduction of the Currency Board in Bulgaria)**
Nikolay Nenovsky, Kalin Hristov
- DP/11/1999 **The Currency Board in Bulgaria: The First Two Years**
Jeffrey B. Miller
- DP/12/2000 **Fundamentals in Bulgarian Brady Bonds: Price Dynamics**
Nina Budina, Tzvetan Manchev
- DP/13/2000 **Currency Circulation after Currency Board Introduction in Bulgaria (Transactions Demand, Hoarding, Shadow Economy)**
Nikolay Nenovsky, Kalin Hristov
- DP/14/2000 **Macroeconomic Models of the International Monetary Fund and the World Bank (Analysis of Theoretical Approaches and Evaluation of Their Effective Implementation in Bulgaria)**
Victor Yotzov
- DP/15/2000 **Bank Reserve Dynamics under Currency Board Arrangement for Bulgaria**
Boris Petrov

- DP/16/2000 **A Possible Approach to Simulate Macroeconomic Development of Bulgaria**
Victor Yotzov
- DP/17/2001 **Banking Supervision on Consolidated Basis (*in Bulgarian only*)**
Margarita Pranzheva
- DP/18/2001 **Real Wage Rigidity and the Monetary Regime Choice**
Nikolay Nenovsky, Darina Koleva
- DP/19/2001 **The Financial System in the Bulgarian Economy**
Jeffrey Miller, Stefan Petranov
- DP/20/2002 **Forecasting Inflation via Electronic Markets Results from a Prototype Experiment**
Michael Berlemann
- DP/21/2002 **Corporate Image of Commercial Banks (1996–1997) (*in Bulgarian only*)**
Miroslav Nedelchev
- DP/22/2002 **Fundamental Equilibrium Exchange Rates and Currency Boards: Evidence from Argentina and Estonia in the 90's**
Kalin Hristov
- DP/23/2002 **Credit Activity of Commercial Banks and Rationing in the Credit Market in Bulgaria (*in Bulgarian only*)**
Kalin Hristov, Mihail Mihailov
- DP/24/2002 **Balassa – Samuelson Effect in Bulgaria (*in Bulgarian only*)**
Georgi Choukalev
- DP/25/2002 **Money and Monetary Obligations: Nature, Stipulation, Fulfilment**
Stanislav Natzev, Nachko Staykov, Filko Rosov
- DP/26/2002 **Regarding the Unilateral Euroization of Bulgaria**
Ivan Kostov, Jana Kostova
- DP/27/2002 **Shadowing the Euro: Bulgaria's Monetary Policy Five Years on**
Martin Zaimov, Kalin Hristov
- DP/28/2002 **Improving Monetary Theory in Post-communist Countries – Looking Back to Cantillon**
Nikolay Nenovsky
- DP/29/2003 **Dual Inflation under the Currency Board: The Challenges of Bulgarian EU Accession (*in Bulgarian only*)**
Nikolay Nenovsky, Kalina Dimitrova
- DP/30/2003 **Exchange Rate Arrangements, Economic Policy and Inflation: Empirical Evidence for Latin America**
Andreas Freytag
- DP/31/2003 **Inflation and the Bulgarian Currency Board**
Stacie Beck, Jeffrey B. Miller, Mohsen Saad

- DP/32/2003 **Banks – Firms Nexus under the Currency Board: Empirical Evidence from Bulgaria**
Nikolay Nenovsky, Evgeni Peev, Todor Yalamov
- DP/33/2003 **Modelling Inflation in Bulgaria: Markup Model (*in Bulgarian only*)**
Kalin Hristov, Mihail Mihailov
- DP/34/2003 **Competitiveness of the Bulgarian Economy**
Konstantin Pashev
- DP/35/2003 **Exploring the Currency Board Mechanics: a Basic Formal Model**
Jean-Baptiste Desquilbet, Nikolay Nenovsky
- DP/36/2003 **A Composite Tendency Indicator for Bulgaria's Industry (*in Bulgarian only*)**
Tsvetan Tsalinsky
- DP/37/2003 **The Demand for Euro Cash: A Theoretical Model and Monetary Policy Implications**
Franz Seitz
- DP/38/2004 **Credibility Level of the Bulgarian Exchange Rate Regime, 1991–2003: First Attempt at Calibration (*in Bulgarian only*)**
Georgi Ganev
- DP/39/2004 **Credibility and Adjustment: Gold Standards Versus Currency Boards**
Jean-Baptiste Desquilbet, Nikolay Nenovsky
- DP/40/2004 **The Currency Board: “The only game in town” (*in Bulgarian only*)**
Kalin Hristov
- DP/41/2004 **The Relationship between Real Convergence and the Real Exchange Rate: the Case of Bulgaria**
Mariella Nenova
- DP/42/2004 **Effective Taxation of Labor, Capital and Consumption in Bulgaria (*in Bulgarian only*)**
Plamen Kaloyanchev
- DP/43/2004 **The 1911 Balance of Payments of the Kingdom of Bulgaria (*in Bulgarian only*)**
Martin Ivanov
- DP/44/2004 **Beliefs about Exchange Rate Stability: Survey Evidence from the Currency Board in Bulgaria**
Neven T. Valev, John A. Carlson
- DP/45/2005 **Opportunities of Designing and Using the Money Circulation Balance (*in Bulgarian only*)**
Metodi Hristov
- DP/46/2005 **The Microeconomic Impact of Financial Crises: The Case of Bulgaria**
Jonathon Adams-Kane, Jamus Jerome Lim

- DP/47/2005 **Interest Rate Spreads of Commercial Banks in Bulgaria** (*in Bulgarian only*)
Mihail Mihailov
- DP/48/2005 **Total Factor Productivity Measurement: Accounting of Economic Growth in Bulgaria** (*in Bulgarian only*)
Kaloyan Ganev
- DP/49/2005 **An Attempt at Measurement of Core Inflation in Bulgaria** (*in Bulgarian only*)
Kalina Dimitrova
- DP/50/2005 **Economic and Monetary Union on the Horizon**
Dr Tsvetan Manchev, Mincho Karavastev
- DP/51/2005 **The Brady Story of Bulgaria** (*in Bulgarian only*)
Garabed Minassian
- DP/52/2005 **General Equilibrium View on the Trade Balance Dynamics in Bulgaria**
Hristo Valev
- DP/53/2006 **The Balkan Railways, International Capital and Banking from the End of the 19th Century until the Outbreak of the First World War**
Peter Hertner
- DP/54/2006 **Bulgarian National Income between 1892 and 1924**
Martin Ivanov
- DP/55/2006 **The Role of Securities Investor Compensation Schemes for the Development of the Capital Market** (*in Bulgarian only*)
Mileti Mladenov, Irina Kazandzhieva
- DP/56/2006 **The Optimal Monetary Policy under Conditions of Indefiniteness** (*in Bulgarian only*)
Nedyalka Dimitrova
- DP/57/2007 **Two Approaches to Estimating the Potential Output of Bulgaria**
Tsvetan Tsalinski
- DP/58/2007 **Informal Sources of Credit and the “Soft” Information Market (Evidence from Sofia)**
Luc Tardieu
- DP/59/2007 **Do Common Currencies Reduce Exchange Rate Pass-through? Implications for Bulgaria’s Currency Board**
Slavi T. Slavov
- DP/60/2007 **The Bulgarian Economy on Its Way to the EMU: Economic Policy Results from a Small-scale Dynamic Stochastic General Equilibrium Framework**
Jochen Blessing
- DP/61/2007 **Exchange Rate Control in Bulgaria in the Interwar Period: History and Theoretical Reflections**
Nikolay Nenovsky, Kalina Dimitrova

- DP/62/2007 **Different Methodologies for National Income Accounting in Central and Eastern European Countries, 1950–1990**
Rossitsa Rangelova
- DP/63/2008 **A Small Open Economy Model with a Currency Board Feature: the Case of Bulgaria**
Jordan Jordanov, Andrey Vassilev
- DP/64/2008 **Potential Output Estimation Using Penalized Splines: the Case of Bulgaria**
Mohamad Khaled
- DP/65/2008 **Bank Lending and Asset Prices: Evidence from Bulgaria**
Michael Frömmel, Kristina Karagyozyova
- DP/66/2008 **Views from the Trenches: Interviewing Bank Officials in the Midst of a Credit Boom**
Neven Valev
- DP/67/2008 **Monetary Policy Transmission: Old Evidence and Some New Facts from Bulgaria**
Alexandru Minea, Christophe Rault
- DP/68/2008 **The Banking Sector and the Great Depression in Bulgaria, 1924–1938: Interlocking and Financial Sector Profitability**
Kiril Danailov Koshev
- DP/69/2008 **The Labour Market and Output in the UK – Does Okun’s Law Still Stand?**
Boris Petkov
- DP/70/2008 **Empirical Analysis of Inflation Persistence and Price Dynamics in Bulgaria**
Zornitsa Vladova, Svilen Pachedjiev
- DP/71/2009 **Testing the Weak-form Efficiency of the Bulgarian Stock Market**
Nikolay Angelov
- DP/72/2009 **Financial Development and Economic Growth In Bulgaria (1991–2006). An Econometric Analysis Based on the Logic of the Production Function)**
Statty Stattev
- DP/73/2009 **Autonomy vs. Stability: the Relationship between Internal and External Money in Bulgaria (1879–1912)**
Luca Fantacci
- DP/74/2009 **The Size of the Shadow Economy in Bulgaria: A Measurement Using the Monetary Method**
Hildegart Ahumada, Facundo Alvarado, Alfredo Canavese, Nicolàs Grosman
- DP/75/2009 **Efficiency of commercial banks in Bulgaria in the wake of EU accession**
Kiril Tochkov, Nikolay Nenovsky
- DP/76/2009 **Structural Current Account Imbalances: Fixed Versus Flexible Exchange Rates?**
Slavi T. Slavov

- DP/77/2009 **Econometric Forecasting of Bulgaria's Export and Import Flows**
Grigor Stoevsky
- DP/78/2009 **Explanations for the Real Exchange Rate Development in the New EU Member States in Transition**
Galina Boeva
- DP/79/2009 **The Great Depression in the Eyes of Bulgaria's Inter-war Economists (How History of Economic Thought Could Matter for Today's Policy Advice)**
Stefan Kolev
- DP/80/2010 **Modeling Interest Rates on Corporate Loans in Bulgaria (*in Bulgarian only*)**
Mihail Mihailov
- DP/81/2010 **A Small Open Economy Model with Financial Accelerator for Bulgaria: The Role of Fiscal Policy and the Currency Board**
Ivan Lozev
- DP/82/2010 **The Impact of the Global Economic Crisis on Bulgaria's Accession to the Euro Area (*in Bulgarian only*)**
Tsvetelina Marinova
- DP/83/2011 **Are Long-term Inflation Expectations Well-anchored? Evidence from the Euro Area and the United States**
Tsvetomira Tsenova